



MAY/JUNE 2026



THE HIGHLIGHTS

PAGE 2: WORDS FROM THE SHIRE
PRESIDENT AND CEO
PAGE 7: LANDCARE
PAGE 9: RECIPE

SHIRE NOTES

WORDS FROM THE SHIRE PRESIDENT AND THE CHIEF EXECUTIVE OFFICER

As the days grow cooler and shorter, things are far from slowing down here in Woodanilling! It's been another productive month, with several important updates and decisions from the May Council meeting.

Public Health Plan Endorsed

We're proud to announce that the Shire's first Public Health Plan has been officially endorsed and is now available on our website.

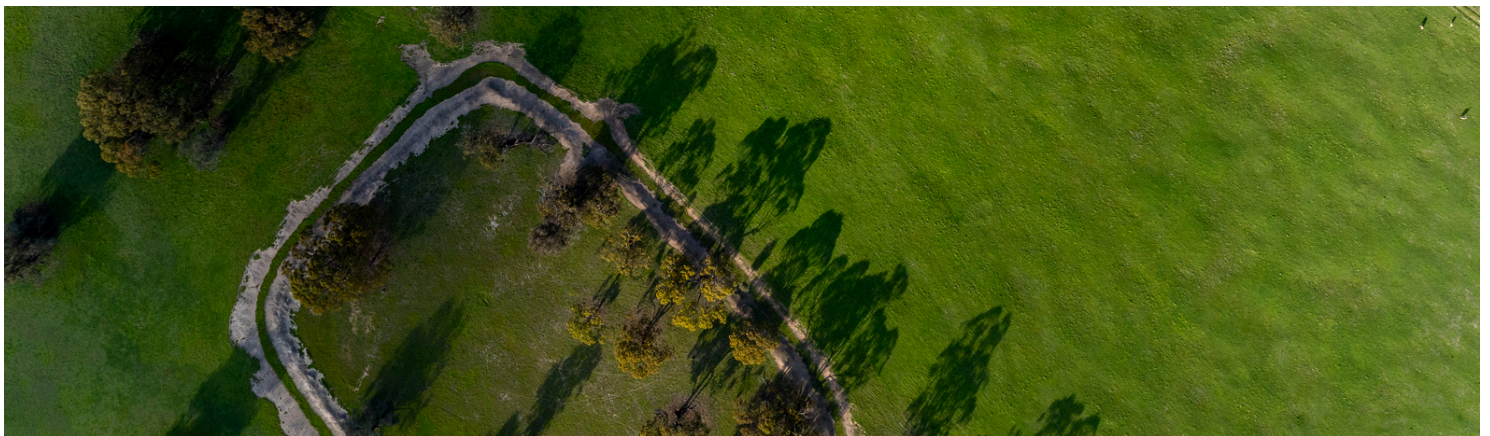
This important plan focuses on improving community health through coordinated efforts across Local, State, and Federal services, in line with the Public Health Act 2016. A big thank you to everyone who contributed by completing the community survey—your input has helped shape the priorities and initiatives.

The plan will run over five years, with annual monitoring and review to ensure it continues to meet our community's needs.

Corporate Business Plan Review

Council has completed the annual review of the Corporate Business Plan, which forms part of The Woodanilling Way (endorsed February 2025).

This review tracks progress on key actions and ensures timelines remain realistic and responsive. It's all about keeping our strategic goals on track and delivering for our community.





SHIRE NOTES

WORDS FROM THE SHIRE PRESIDENT AND THE CHIEF EXECUTIVE OFFICER

2026 Bloom Festival Update

Woodanilling continues to participate in the Great Southern Treasures (GST) regional tourism initiative.

While the current GST agreement will conclude on 30 June 2026, the participating Shires have endorsed a proposal from Australia's South West to deliver the 2026 Bloom Festival in September and October. This includes Woodanilling hosting the opening event for the Festival on Saturday 12th September, which is exciting news for Woody! Further updates will be provided soon.

The popular Woodanilling Art Exhibition will also be a special event to mark in the calendar, with the formal opening on Friday 11th September and then open Saturday 12th & Sunday 13th September. Thank you to the dedicated working group and community supporting this much-loved event and our talented local artists.

Emergency Services Update

Council has endorsed changes to the Community Emergency Services Manager (CESM) arrangement.

Due to increased workload, compliance requirements, and rising emergency demands, the current three-Shire model will transition to a two-Shire partnership with the Shire of Broomehill-Tambellup.

Pending DFES approval, recruitment for this vital role will begin soon.

CEO Transition

As part of the upcoming leadership transition:

- Council has approved the appointment of an Acting CEO to ensure continuity.
- Recruitment for a permanent CEO is underway, with applications having closed 29 May.

More details will be shared once arrangements are finalised.

SHIRE NOTES

WORDS FROM THE SHIRE PRESIDENT AND THE CHIEF EXECUTIVE OFFICER

Road Works Completed

We're pleased to report that the 2025/26 capital road works program has been completed, including:

- Reconstruction of sections of Robinson Road West
- Upgrades to Oxley Road
- Line-marking reinstated across completed works

Additional warranty works on Robinson Road West (near Great Southern Highway) are scheduled for September/October, with temporary line-marking already in place in the meantime.

Woody Action

A big thank you to the Woody Action Team who have been repainting the verandah posts and rafters at the recreation centre. It is looking great, we appreciate it!

Stay Informed

For full details on Council decisions and updates, visit:

www.woodanilling.gov.au

Thank you for staying connected with your community—we look forward to sharing more updates with you next month!

Russel Thomson
Shire President



Anika Serer
Chief Executive Officer



SHIRE NOTES

HEADING INTO WINTER

With winter creeping up on us we encourage members of the Woodanilling community to make sure you remain prepared for the coming months. Do a maintenance check on your vehicles if not completed already - Check your tyres, lights, window wipers and internal workings to ensure safety when on the road.

- Drive with your headlights on so you are visible to other drivers
- Slow down - especially when unsure, its a great idea to slow down and take it easy so you don't become a risk to yourself or others given the wetter setting.

With that we also encourage you to clean your gutters to prevent leaks, floods or overflow on your property. We hope this winter season treats you kindly.



FALLEN TREE?
KNOW WHO TO CALL:

Fallen tree or branches that have damaged your home or vehicle, making it unsafe:	Fallen tree or branches over your fence or in your yard:	Fallen tree or branches across a minor street or road:	Fallen tree across a major road or highway:
SES ☎ 132 500	Private Tree Removal Company	Local Government	Main Roads WA ☎ 138 138

For more storm safety information visit: dfes.wa.gov.au/storm




COMMUNITY



WAGIN / WOODANILLING LANDCARE ZONE



Community Flora and Fauna Cataloguing Workshops

The WWLZ began our Flora & Fauna Cataloguing workshops for Woodanilling community members and Primary school kids. Our community participants first visited the Herbarium and Taxidermy exhibits at the DBCA offices and Blyth Tree Farm in Katanning, to gain some up-close experiences of our local native flora and fauna to help prepare them for our upcoming artistic workshops.

Participants looked through Herbarium archives, learned to identify local flora species, and learned about native tree planting procedures from seed.

Participants then went on a guided bush walk with botanical artist and botanist Ellen Hickman and fauna specialist Genevieve Harvey, and gained an in-depth look at our local native wildlife and how to spot signs of them in our bushland.

Participants then used what they had learned and collected to begin creating their artistic catalogues of our local flora and fauna, further guided by the support of botanical artist Ellen Hickman.

Participants will work on their catalogues throughout the Winter, and will gather again for our Spring workshop for another guided bushwalk, to span the difference across seasons for our wildlife.



As with our workshops for community members, we held a half-day workshop for Woodanilling Primary School students. Students went on a guided nature walk, learned about the wildlife in their own backyards with a more detailed lens, and got to work creating their own artistic catalogues.

Participants of both workshops will then get the opportunity to showcase their final pieces of art at the Great Southern Bloom Festival in September!



natural resource
management program



This project is supported by funding from the Western Australian Government's State NRM Program.

0428 231 506

wwlzprojects@outlook.com

COMMUNITY

JUSTICE OF THE PEACE

Did you know that we have 2 JP's in Woodanilling.

Ray Baxter - 0428 525 530

Russel Thomson- 0419 950 217

SHORT MAT BOWLS

Anyone can join! Bowls available. Come and socialise on Monday afternoons at 2.00p.m. at the Woodanilling Recreation Centre.

Contact Pauline for details or just turn up!!



TO BE ADDED TO THE WONGI EMAIL LIST

If you would like to be added to the Wongi email list to receive future editions straight to your inbox, please email shire@woodanilling.wa.gov.au

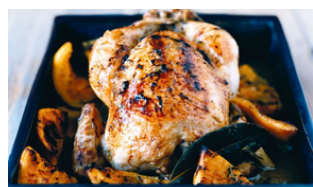


RECIPES

ORANGE CHICKEN

INGREDIENTS

1.8kg organic chicken
4 oranges
2 garlic cloves, crushed
4 rosemary sprigs
3-4 fresh bay leaves
1 cup (250ml) chicken liquid stock
60g unsalted butter



Step 1

Rinse chicken inside and out under cold water, then pat dry with paper towel. Juice the oranges. Quarter the juiced oranges and place in a large bowl with the juice, chicken, garlic and herbs. Cover and marinate in the fridge for 6-8 hours, turning the chicken occasionally. Preheat the oven to 190°C. Remove chicken from the bowl, reserving marinade.

Step 2

Place 2 orange pieces and a rosemary sprig in the cavity of the chicken, then tie the legs together using kitchen string.

Step 3

Season with salt and pepper, then place in a roasting pan with the remaining orange halves and the reserved marinade. Roast in the oven for 1-1 1/2 hours, basting occasionally with pan juices, until chicken is golden and juices run clear when a skewer is inserted into thickest part of thigh joint. Transfer the chicken to a serving plate and cover loosely to keep warm.

Step 4

Skim the excess fat from the pan juices, then place the roasting pan over medium heat. Add the chicken stock and bring to the boil. Add the butter, 20g at a time, whisking constantly until combined. Season to taste with salt and freshly ground black pepper, then strain into a jug. Carve the chicken and serve with the orange sauce.

Step 1

Grease a 3cm deep, 15.5cm x 25cm (base) slab pan. Line base and sides with baking paper, extending paper 2cm above edges of pan.

Step 2

Place condensed milk and butter in a small saucepan over medium heat. Cook, stirring, for 5 minutes or until smooth and combined. Remove from heat.

Step 3

Using a food processor, process biscuits until fine crumbs. Transfer to a bowl. Add coconut and lemon rind. Stir to combine. Add hot butter mixture. Mix well to combine. Press mixture over the base of prepared pan. Cover. Refrigerate for 1 1/2 hours or until firm.

Step 4

Lemon icing: Sift icing sugar into a bowl. Add butter and lemon juice. Beat with a wooden spoon until smooth and combined. Spread icing over slice. Stand at room temperature for 30 minutes or until icing has set. Cut into pieces. Serve.

LEMON SLICE

INGREDIENTS

1/2 cup Sweetened Condensed Milk
100g butter
200g granita biscuits
1 cup Desiccated Coconut
2 tsp finely grated lemon rind

Lemon icing
2 cups pure icing sugar
20g butter, softened
2 1/2 tbsp lemon juice





LiveWell

HealthyLifestylesProgram

FREE

Want to improve your health?

Join our FREE eight-week LiveWell Healthy Lifestyles Program and take the first step towards a healthier you.

What's on offer:

- practical, hands-on group activities
- support to make healthy lifestyle changes
- nutrition education and goal setting
- regular contact with health professionals.



Benefits for you:

- improved mental health and well-being
- increased motivation to live well
- better fruit and vegetable intake
- tools to manage lifestyle-related health risks.



If you're interested, contact:

Ph: 9821 6279

E: GS.HealthPromotion@health.wa.gov.au

Become a Field Officer



Census

- ✓ Deliver Census letters and forms
- ✓ Earn extra money close to home
- ✓ No experience necessary

Temporary, casual jobs
with flexible hours are
available all over Australia.

Apply now
census.abs.gov.au/jobs





GERALDTON
Murray Simkin
0429 947 919



COOROW
Juliet McDonald
0429 945 332



MOORA
Alana Alexander
0417 490 047



WONGAN HILLS
Saritha Marais
0429 579 541



KELLERBERRIN
Tracey Hobbs
0429 470 007



MERREDIN
Kobus Marais
0427 766 508



NORTHAM
David Armstrong
0447 109 545



CORRIGIN
Steve Cooke
0429 934 243



WILLIAMS
Mark Stephens
0427 788 521



NARROGIN
David Hull
0477 923 684



LAKE GRACE
Brett Coxon
0427 766 508



ESPERANCE (W)
Matt Ryan
0408 092 355



ESPERANCE (E)
Nick Donkin
0428 715 045



BUNBURY
Ralph Papalia
0427 766 535



KOJONUP
Chloe Turner
0447 469 245



ALBANY (E)
Andrew Wallace
0427 083 820



ALBANY (W)
Mark Ladny
0498 223 421



Local Service

Summit Fertilizers Area Managers live and work in your local communities, and understand what matters most for your farm to succeed, backed with over 35 years of agricultural knowledge and recommendations customised for your needs.

For more information on how Summit can partner with you for growing success, please contact your Local Area Manager.






New Patient's welcome Dental care for you and your family

From the moment you walk in, we endeavour to provide you with a relaxed, comfortable and friendly environment. Our highly skilled team specialise in the latest dental technology to ensure an efficient and careful treatment. We will care for you and look after all your dental needs.

Dr VJ Chandramohan
Dr Wendy Patak
Dr Hayden Jones

 9842 2345

60 Aberdeen Street Albany
Next to Albany City Motors
www.aberdeendental.com.au



Preferred providers for:



medibank
members' choice



We accept all private Health Funds

Members First
Platinum



PETER RUNDLE MLA

DEPUTY LEADER OF THE NATIONALS WA

MEMBER FOR ROE

NARROGIN

☎ 08 9881 1225

📍 83 Federal Street

✉ peter.rundle@mp.wa.gov.au

ESPERANCE

☎ 08 9071 6555

📍 107 Dempster Street

📱 @PeterRundleRoe

DEUTZ-FAHR

WARRIOR

5 YEAR
5000 HOUR
WARRANTY*

EUROPEAN EFFICIENCY - AUSTRALIAN PROVEN

171 - 336 HP



**6 CYLINDER TIER 3 ENGINES
50 & 60KM/H RC-SHIFT & TTV VARIABLE TRANSMISSIONS**



6 RC-SHIFT



6 TTV



8 TTV



9 TTV

DEMO UNIT AVAILABLE - ENQUIRE NOW!

*T&C'S APPLY. SEE WWW.DEUTZFAHR.COM.AU

SUPPLIED & SERVICED BY



TOTAL AG CENTRE

**152 Beaufort Street,
Katanning WA 6317**

**PHONE 0459 977 449
www.totalagcentre.com.au**



WONGI CONTRIBUTORS

All contributions are to be sent to the new Wongi email or to the volunteers listed below; or may be left at the Woodanilling Store in a box provided or handed into the Shire office. Any queries, comments or complaints are to be directed to the Wongi Volunteer.

WONGI CONTACT

For any inquiries, please contact Ciara Whitmore at 3316 Robinson Rd, Woodanilling WA 6316, or by phone at 9823 1506.

NEW IDEAS ENCOURAGED!!

We would love to see new suggestions and ideas for the Wongi.

By chance do you know someone with upcoming births, marriages, milestones, new locals to have their birthdays added or ad put into the Wongi. Any comments in passing, interesting activities happening in Woody?

Email- shire@woodanilling.wa.gov.au with your comments, suggestions and updates

All contributions are to be sent to the new Wongi email or to the volunteers listed below; or may be left at the Woodanilling Store in a box provided or handed into the Shire office. Any queries, comments or complaints are to be directed to the Wongi Volunteer.

ADVERTISING RATES 2025/2026

For black & white A4 advertisements per month:

Full page: \$66.00 - Half page: \$33.00 - 1/4 page: \$16.50 - Business card: \$8.25

To advertise in the Wongi, email: shire@woodanilling.wa.gov.au

DISCLAIMER

Due to the Trade Practices Act 1974, this publication accepts no responsibility for the accuracy or reliability of the contributors or advertisers. The publisher reserves the right to refuse matter considered unsuitable. The opinions expressed are not necessarily those of the Shire of Woodanilling or the Wongi volunteers.

IF UNCLAIMED

PLEASE RETURN TO

PO BOX 99

WOODANILLING WA 6316