



JULY 2025



# THE HIGHLIGHTS

PAGE 1: WORDS FROM THE SHIRE  
PRESIDENT

PAGE 2: WORDS FROM THE CEO

PAGE 3-4: WOODANILLING ART EXHIBITION

PAGE 11: COMMUNITY GROUPS



# SHIRE NOTES

---

## WORDS FROM THE SHIRE PRESIDENT

Hi Everyone

With winter setting in, Woodanilling has received some good rains in the last few weeks, let's hope it continues.

The oval is coming along well and is looking really good. Positive reports have been received from all that use it. If you haven't seen the oval for a while, go and have a look.

Thank you to everyone that contributed suggestions and ideas towards the 25/26 Budget. Council Officers are working on the documentation with the target of adopting the budget in early August.

The Shire has had meetings with various State Government and Agency members including the new Minister for the Great Southern, Hon. Reece Whitby MLA, Live Export Transition Advocate, Dr Chris Rodwell and the Auditor General, Caroline Spencer. I particularly believe the new position of 'Minister for the Great Southern' will be of great benefit to all towns in the Great Southern, having a direct contact on relevant issues in our region straight to a Minister rather than through a Department or Agency should mean better outcomes.

The Shire and Community will again be part of the 'Bloom Festival' with the very successful 'Woodanilling Art Exhibition' locked in from Friday the 26<sup>th</sup> September through to Monday 29<sup>th</sup> September 2025. Anyone that wants to get involved, please contact the Shire Office.

We're pleased to see that stage 1 of the playground upgrade has now commenced. Just remember that there will be restricted access to the park whilst these works are being completed.

Stay warm and safe.

Cr Dale Douglas  
Shire President





## WORDS FROM THE CHIEF EXECUTIVE OFFICER

With Winter finally here, we urge everyone to stay vigilant while traveling. Wet weather and strong winds can cause trees to fall and scatter debris across roads, creating dangerous driving conditions. Please contact us if you do come across a hazardous condition, and we will attend as soon as safely possible. To assist us with this, it is helpful if you can tell us the nearest cross-roads to the location (or other identifying features) and estimated size/extent of the hazard.

As the Shire President has noted, we have some exciting events happening in the community over the next six months. Stage 1 of the Centenary Park upgrades will commence shortly, with the installation of a new flying fox, swing set, see-saw and rockers. There will be park closures while old equipment is removed and the site prepared/installation underway, which we will let you know as soon as possible. Stage 2 is on track to commence later this year, with the new and improved playground something we are very excited about.

We are also seeking expressions of interest from local artists to present their works at the Bloom art exhibition from Friday 26<sup>th</sup> – Monday 29<sup>th</sup> September, and community members that are available to help make this another great event.

Anika Serer  
Chief Executive Officer



# SHIRE NOTES

## WOODANILLING ART EXHIBITION - BLOOM FESTIVAL 2025

# WOODANILLING ART EXHIBITION

**26TH SEPTEMBER 2025 TO 29TH SEPTEMBER 2025**

*Join us for the Woodanilling Art Exhibition as part of the Bloom Festival. This event showcases local talent and creativity, offering a platform for artists to display their work. To register your interest in exhibiting or for further information, please contact the Shire of Woodanilling at 9823 1506.*



📞 (08) 9823 1506

✉ [shire@woodanilling.gov.au](mailto:shire@woodanilling.gov.au)

# SHIRE NOTES

## WOODANILLING ART EXHIBITION - BLOOM FESTIVAL 2025

### Woodanilling Art Exhibition Bloom Festival 2025 Expression of Interest

Friday 26<sup>th</sup> September to Monday 29<sup>th</sup> September 2025

Name: \_\_\_\_\_

Phone: \_\_\_\_\_

Email: \_\_\_\_\_

Type of Art: \_\_\_\_\_

No. of Pieces: \_\_\_\_\_

Do you need a table or display board?

☐ Yes ☐ No

Can we use photos of your work for promotion?

☐ Yes ☐ No

Anything else we should know?

\_\_\_\_\_  
\_\_\_\_\_

Please indicate your availability to assist with the exhibition roster:

\_\_\_\_\_  
\_\_\_\_\_

Please return this form by Friday, 1 August 2025

Email to: [shire@woodanilling.wa.gov.au](mailto:shire@woodanilling.wa.gov.au)

Or drop off at the Woodanilling Shire Office

# SHIRE NOTES

## DFES



### Maintaining Smoke Alarms



#### Once a month

Press the test button on your smoke alarm for up to 10 seconds until you hear the alarm sound. If the alarm does not sound, try putting in a different battery or replace the smoke alarm.

#### Every year

##### Clean your smoke alarms

Use a vacuum cleaner with a soft brush to gently clean dust and dirt from your smoke alarm.

Cleaning your smoke alarm helps stop false alarms and makes sure smoke can reach the sensor.

#### Replace the battery every year, if needed

All smoke alarms have batteries, even smoke alarms connected to mains power.

Replace the battery in smoke alarms that use a 9-volt alkaline battery. Smoke alarms with a non-removable lithium battery will have a warning label saying not to replace the battery.

If you're unsure about the battery type, ask the smoke alarm manufacturer.

#### Every 10 years

##### Replace all smoke alarms every 10 years

Smoke alarms do not last forever. Their sensitivity decreases over time, making them unreliable. Replace them every 10 years.



Test your alarms once a month.



Clean your smoke alarms every year.



Replace the battery every year, if needed.



Replace all smoke alarms every 10 years.



# SHIRE NOTES

## DFES



### How do I change a battery?

#### 1. Identify what type of alarm you have

All smoke alarms come with batteries. Even those connected to the mains power have a back-up battery for power outages.

The battery could be a non-removable lithium battery that lasts the entire 10-year life of the alarm. This means you don't need to replace the battery every year.

Alternatively, the battery could be a replaceable 9-volt alkaline battery.

Smoke alarms with a 10-year non-removable lithium battery will have a warning label stating the battery is not to be replaced.

#### 2. Turn off the mains power (for mains-powered alarms)

Turn off the mains power at your meter box (fuse box) before changing the battery in a mains-powered alarm. The green light on the alarm will go out and the red light will flash.

#### 3. Remove the smoke alarm from its base

Smoke alarms are attached to the ceiling with a base. To remove the alarm, you might need to press a button, twist and pull, or slide it off. Check the manufacturer's instructions for your model.

#### 4. Replace the old battery

If you can take out the batteries, change them once a year.

#### 5. Turn on the mains power (for mains-powered alarms)

Turn on the mains power at your meter box (fuse box). The green light on the alarm will come back on.

#### 6. Test the smoke alarm

Test the smoke alarm again, by pressing the test button until you hear the alarm sound. If you do not hear the alarm sound, try putting in a different battery or replace the smoke alarm.



Mains-powered smoke alarm



10-year lithium battery alarm



9-volt alkaline battery smoke alarm

# SHIRE NOTES

## DFES

### What do I do if my smoke alarm is beeping?

If your smoke alarm beeps, it needs maintenance or replacement. Don't ignore it.

#### Contaminated detection chamber

Dust and cobwebs can make smoke alarms beep by blocking sensors or affecting the battery connections.

Use a vacuum cleaner with a soft brush to gently clean dust and dirt from your smoke alarm.

#### Low power

##### 10-year lithium battery models

If the alarm beeps about once per minute and the red light flashes, the lithium battery is low, and you need to replace the smoke alarm.

##### 9-volt alkaline battery models

When the battery is low, the smoke alarm beeps and red light flashes about once every 30 to 60 seconds. Replace the battery and then press the test button to ensure the smoke alarm is functioning properly.

Replace the battery once a year for best results.

##### Mains-powered smoke alarms with a 10-year lithium rechargeable back-up battery

If the alarm beeps and red light flashes every 30 to 60 seconds, the battery back-up is low.

First, check and reset the circuit breaker in your home. Then check the indicators again. If you're unsure, contact a licensed electrician.

The alarm may beep after a power outage if the battery is low. Once power is restored, the beeping should stop within 2 hours as the battery recharges. If the beeping continues after 2 hours with the green light on, contact the smoke alarm manufacturer for assistance.

##### Mains-powered smoke alarms with a 9-volt alkaline battery back up

Replace the backup battery when the smoke alarm beeps and red light flashes about once every 30 to 60 seconds. Check the manufacturer's instructions for the right battery type. Use high-quality, long-lasting batteries.

#### When to replace smoke alarms

If your smoke alarm continues to beep after cleaning and replacing the battery, it's likely faulty or too old and needs to be replaced.

All smoke alarms and heat alarms must be replaced every 10 years.



**Install smoke alarms in every sleeping area, living room, hallway, stairway, and garage.**



**Replace smoke alarms every 10 years.**



**Always use a licensed electrician when installing mains-powered smoke alarms.**



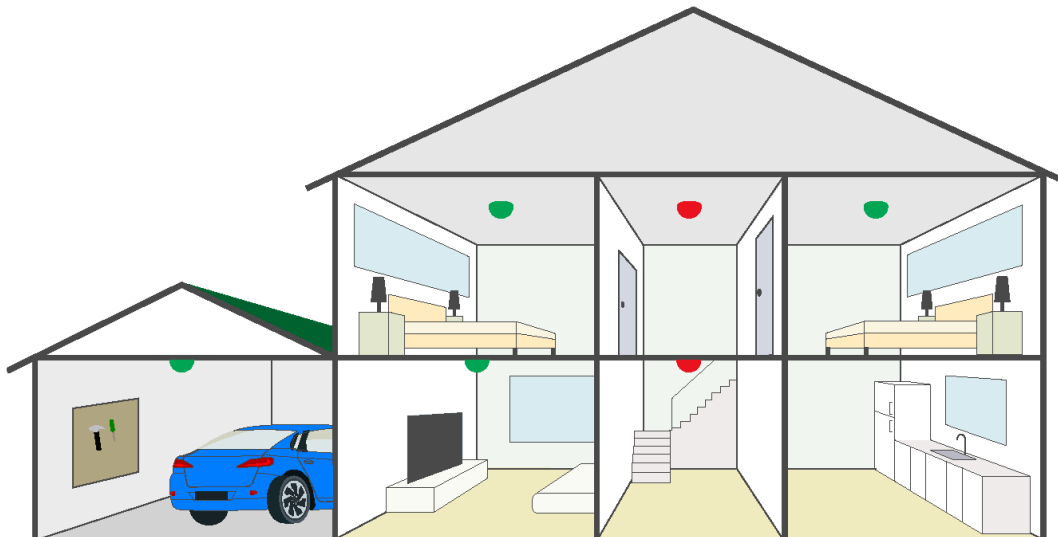
**Interconnect your smoke alarms, so when one alarm detects a fire, all alarms sound.**



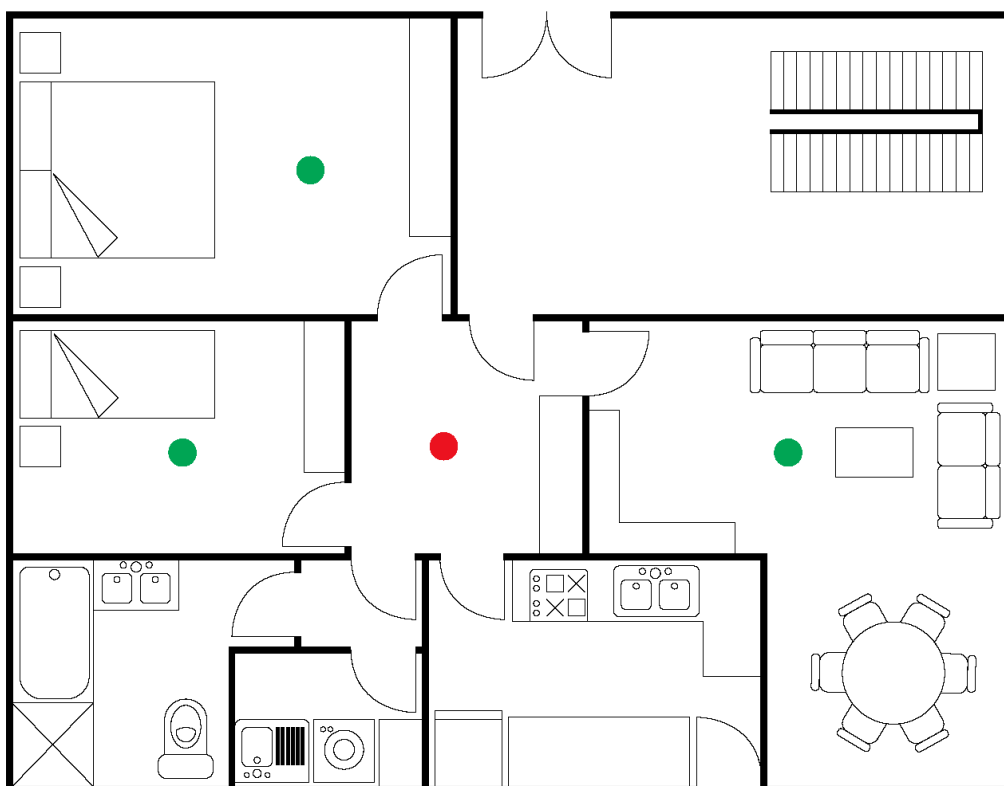
# SHIRE NOTES

## DFES

### Multi-level floor plan



### Two-bedroom apartment



#### Key

- Smoke alarms for the minimum legal requirement
- Recommended smoke alarm placement for best protection

# SHIRE NOTES

## HEADING INTO WINTER

With winter creeping up on us we encourage members of the Woodanilling community to make sure you remain prepared for the coming months. Do a maintenance check on your vehicles if not completed already - Check your tyres, lights, window wipers and internal workings to ensure safety when on the road.

- Drive with your headlights on so you are visible to other drivers
- Slow down - especially when unsure, its a great idea to slow down and take it easy so you don't become a risk to yourself or others given the wetter setting.

With that we also encourage you to clean your gutters to prevent leaks, floods or overflow on your property. We hope this winter season treats you kindly.

## FALLEN TREE? KNOW WHO TO CALL:



Fallen tree or branches that have damaged your home or vehicle, making it unsafe:	Fallen tree or branches over your fence or in your yard:	Fallen tree or branches across a minor street or road:	Fallen tree across a major road or highway:
<b>SES</b> 132 500	<b>Private Tree Removal Company</b>	<b>Local Government</b>	<b>Main Roads WA</b> 138 138

For more storm safety information visit: [dfes.wa.gov.au/storm](https://dfes.wa.gov.au/storm)

# COMMUNITY

## WOODANILLING CWA

CWA meetings are on 3rd Monday of the month at the CWA Cottage.



## SHORT MAT BOWLS

Short Mat Bowls is at the Rec Centre at 2.00p.m. on Monday afternoons.



## GAMES DAY AT THE REC CENTRE

Looking for a fun way to spend your Monday afternoons? Join us every Monday from 2-4pm at the Rec Centre for Games Day! Mike and Marion Taylor will be hosting a variety of board games and card games. For just \$3, enjoy a relaxing afternoon with tea and biscuits included. Come alone or bring a friend—everyone is welcome!

## SUPPORT OUR LOCAL WOODANILLING BUSINESS

*Social* **COFFEE MORNINGS**

Start your day off right with a freshly brewed coffee and great company.

**10.00am**  
every Thursday at

**THE WOODY SHOP**

Customer loyalty cards available.

General store • Café • Post office



# COMMUNITY

## WOODY ACTION

There will be a meeting for “Woody Action”

in the Woodanilling Town Hall

on Sunday 20th July 2025 at 11AM.

Ms Gabby Major, Town Team Enabler (Great Southern and Esperance Regions) Town Team Movement,

will be in attendance to speak to us all.

Everyone welcome.

Please join us and have your say in what will happen

in your town in the coming months.

Enquiries to Ralph Thomas – 0474 112 878.

### The Town Team Approach

**Town Teams** are positive and proactive organisations that work collaboratively with their local government to improve a place or area. The Town Team model is inclusive and open to everyone – businesses, residents, community groups and anyone keen to have a go. The only requirement to be a Town Team is to align with the [Town Team Charter](#).



Town Teams are open to everyone, including businesses, landowners and residents



They work positively with their local government



To improve a place or area

# COMMUNITY

## JUSTICE OF THE PEACE

Did you know that we have 4 JP's in Woodanilling.

Ray Baxter - 9823 1546

Russel Thomson- 0419 950 217

Peter Bartholomeusz- 0447 771 511

Stephen Jefferies- 9823 1508



## SUPPORT OUR LOCAL WOODANILLING BUSINESS



THE WOODY SHOP

### Opening Hours

Monday	8:00 am - 5:00 pm
Tuesday	8:00 am - 5:00 pm
Wednesday	8:00 am - 5:00 pm
Thursday	8:00 am - 5:00 pm
Friday	8:00 am - 5:00 pm
Saturday	9:00 am - 12:00 pm
Sunday	Closed

# COMMUNITY

## PLATES FOR SALE



For Sale:

Set of 5 Special Local Authority plates

\$550.00 including GST

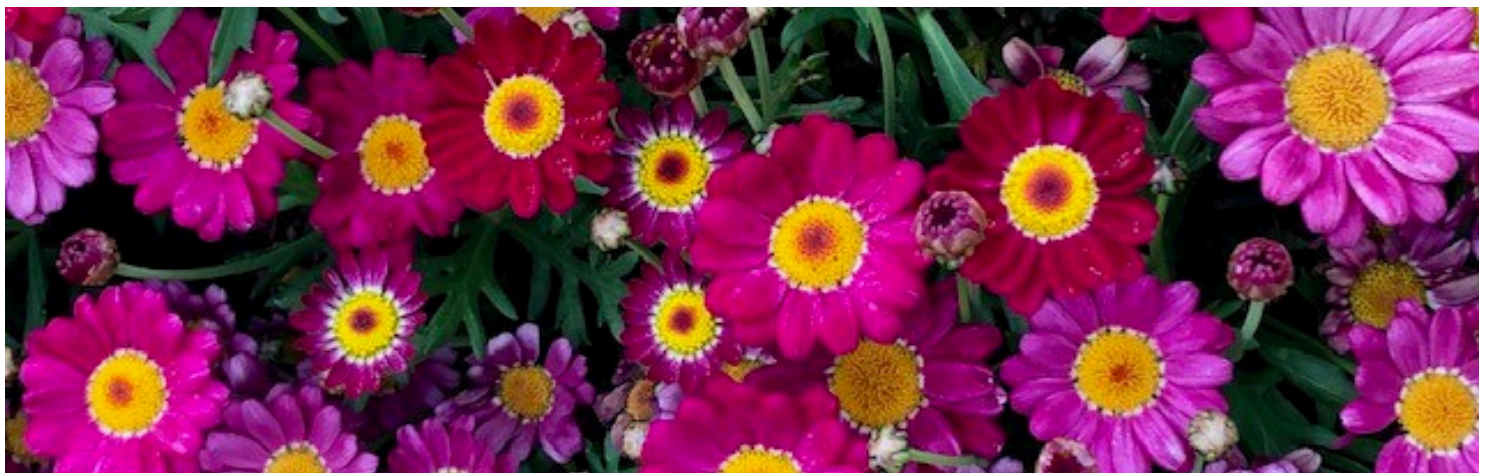
Prefer not to split

Contact Trevor on mobile:(0418) 828015

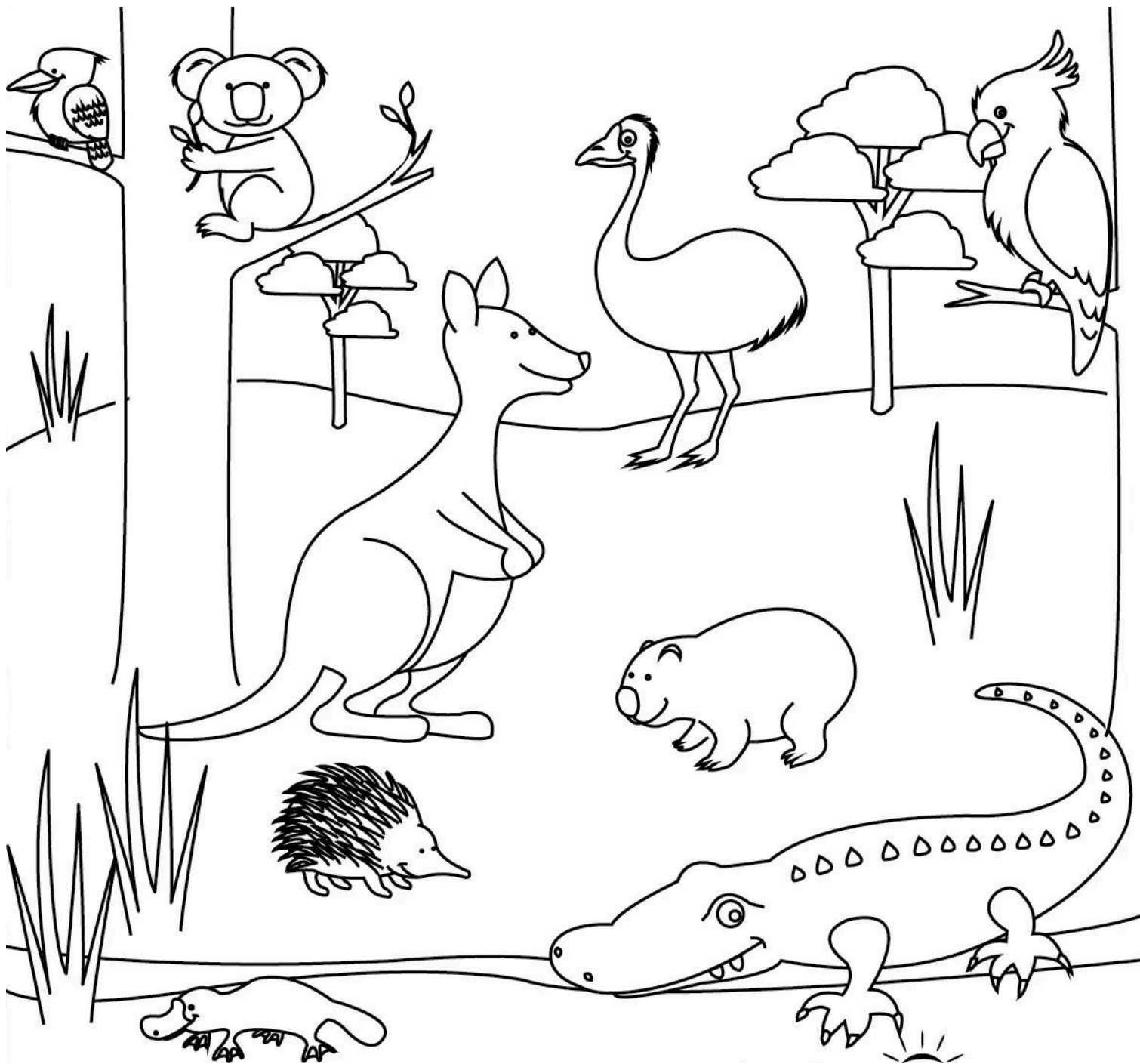
## SMALL BUSINESS AND SALE ADVERTISING

I am an independent business owner representing Amway. If anyone is interested in placing any orders for products at any time, please contact Jacqui Grey on 0428 658 526.

Please also see across a ESpring water purification system attached for sale.







What is your favourite animal & why?

---

---

---

Colouring In Competition- Submit your entry to the Shire Office or email [shire@woodanilling.wa.gov.au](mailto:shire@woodanilling.wa.gov.au)  
We love to feature all children's drawings so please feel free.  
**Please submit your name, age & contact details with your entry.**

# SHIRE NOTES

## WOODANILLING HISTORY AND MORE

The Shire of Woodanilling, located in Western Australia's Great Southern region, is approximately 250 kilometers southeast of Perth. Covering about 1,129 square kilometers, it is home to a close-knit community of around 400 residents. The name "Woodanilling" is believed to be derived from the Aboriginal Noongar language, meaning "place of little fishes." European settlers arrived in the late 19th century, with farming activities such as sheep grazing and crop cultivation laying the foundation for the local economy.

The construction of the Great Southern Railway in 1889 was a significant milestone, boosting connectivity and trade. In 1906, the Woodanilling Road District was officially gazetted, marking the start of structured local governance. The community developed infrastructure, including roads and public buildings, allowing growth and accessibility. The World Wars impacted Woodanilling, with many local men serving overseas, leading to changes in agricultural practices. Post-war modernisation improved farming techniques. In 1961, the district transitioned to the Shire of Woodanilling, enhancing local governance. The 20th century saw agricultural advancements and a strong sense of community. Recent decades have focused on environmental conservation and heritage preservation. Today, the shire continues to attract visitors with its scenic landscapes and rich history.



Woodanilling Cottage Hospital opening 1918

# RECIPES

## ORANGE CHICKEN

### INGREDIENTS

1.8kg organic chicken  
4 oranges  
2 garlic cloves, crushed  
4 rosemary sprigs  
3-4 fresh bay leaves  
1 cup (250ml) chicken liquid stock  
60g unsalted butter



### Step 1

Rinse chicken inside and out under cold water, then pat dry with paper towel. Juice the oranges. Quarter the juiced oranges and place in a large bowl with the juice, chicken, garlic and herbs. Cover and marinate in the fridge for 6-8 hours, turning the chicken occasionally. Preheat the oven to 190°C. Remove chicken from the bowl, reserving marinade.

### Step 2

Place 2 orange pieces and a rosemary sprig in the cavity of the chicken, then tie the legs together using kitchen string.

### Step 3

Season with salt and pepper, then place in a roasting pan with the remaining orange halves and the reserved marinade. Roast in the oven for 1-1 1/2 hours, basting occasionally with pan juices, until chicken is golden and juices run clear when a skewer is inserted into thickest part of thigh joint. Transfer the chicken to a serving plate and cover loosely to keep warm.

### Step 4

Skim the excess fat from the pan juices, then place the roasting pan over medium heat. Add the chicken stock and bring to the boil. Add the butter, 20g at a time, whisking constantly until combined. Season to taste with salt and freshly ground black pepper, then strain into a jug. Carve the chicken and serve with the orange sauce.

### Step 1

Grease a 3cm deep, 15.5cm x 25cm (base) slab pan. Line base and sides with baking paper, extending paper 2cm above edges of pan.

### Step 2

Place condensed milk and butter in a small saucepan over medium heat. Cook, stirring, for 5 minutes or until smooth and combined. Remove from heat.

### Step 3

Using a food processor, process biscuits until fine crumbs. Transfer to a bowl. Add coconut and lemon rind. Stir to combine. Add hot butter mixture. Mix well to combine. Press mixture over the base of prepared pan. Cover. Refrigerate for 1 1/2 hours or until firm.

### Step 4

Lemon icing: Sift icing sugar into a bowl. Add butter and lemon juice. Beat with a wooden spoon until smooth and combined. Spread icing over slice. Stand at room temperature for 30 minutes or until icing has set. Cut into pieces. Serve.

## LEMON SLICE

### INGREDIENTS

1/2 cup Sweetened Condensed Milk  
100g butter  
200g granita biscuits  
1 cup Desiccated Coconut  
2 tsp finely grated lemon rind

Lemon icing  
2 cups pure icing sugar  
20g butter, softened  
2 1/2 tbsp lemon juice





# Peter Rundle MLA

## Member for Roe



**Narrogin Office** Ph: 9881 1225  
83 Federal Street  
Narrogin WA 6312

**Esperance Office** Ph: 9071 6555  
107 Dempster Street  
Esperance WA 6450

**DEPUTY LEADER OF  
THE NATIONALS WA**

[www.peterrundle.com.au](http://www.peterrundle.com.au)  
f PeterRundleRoe  
E: [peter.rundle@mp.wa.gov.au](mailto:peter.rundle@mp.wa.gov.au)





**GERALTON**  
Murray Simkin  
0429 947 919



**COOROW**  
Juliet McDonald  
0429 945 332



**MOORA**  
Alana Alexander  
0417 490 047



**WONGAN HILLS**  
Saritha Marais  
0429 579 541



**KELLERBERRIN**  
Tracey Hobbs  
0429 470 007



**MERREDIN**  
Kobus Marais  
0427 766 508



**NORTHAM**  
David Armstrong  
0447 109 545



**WILLIAMS**  
Mark Stephens  
0427 788 521



**CORRIGIN**  
Steve Cooke  
0429 934 243



**NARROGIN**  
David Hull  
0477 923 684



**LAKE GRACE**  
Brett Coxon  
0427 766 508



**ESPERANCE (W)**  
Matt Ryan  
0408 092 355



**ESPERANCE (E)**  
Nick Donkin  
0428 715 045



**BUNBURY**  
Ralph Papalia  
0427 766 535



**KOJONUP**  
Chloe Turner  
0447 469 245



**ALBANY (E)**  
Andrew Wallace  
0427 083 820



**ALBANY (W)**  
Mark Ladny  
0498 223 421



## Local Service

Summit Fertilizers Area Managers live and work in your local communities, and understand what matters most for your farm to succeed, backed with over 35 years of agricultural knowledge and recommendations customised for your needs.

For more information on how Summit can partner with you for growing success, please contact your Local Area Manager.





**DEUTZ-FAHR**

# WARRIOR

**5** YEAR  
5000 HOUR  
WARRANTY\*

**EUROPEAN EFFICIENCY - AUSTRALIAN PROVEN**

**171 - 336 HP**



**6 CYLINDER TIER 3 ENGINES**

**50 & 60KM/H RC-SHIFT & TTV VARIABLE TRANSMISSIONS**



**6 RC-SHIFT**



**6 TTV**



**8 TTV**



**9 TTV**

**DEMO UNIT AVAILABLE - ENQUIRE NOW!**

\*T&C'S APPLY. SEE [WWW.DEUTZFAHR.COM.AU](http://WWW.DEUTZFAHR.COM.AU)

**SUPPLIED & SERVICED BY**



## TOTAL AG CENTRE

**152 Beaufort Street,  
Katanning WA 6317**

**PHONE 0459 977 449  
[www.totalagcentre.com.au](http://www.totalagcentre.com.au)**





---

## WONGI CONTRIBUTORS

All contributions are to be sent to the new Wongi email or to the volunteers listed below; or may be left at the Woodanilling Store in a box provided or handed into the Shire office. Any queries, comments or complaints are to be directed to the Wongi Volunteer.

---

## WONGI CONTACT

For any inquiries, please contact Ciara Whitmore at 3316 Robinson Rd, Woodanilling WA 6316, or by phone at 9823 1506.



*NEW IDEAS ENCOURAGED!!*

We would love to see new suggestions and ideas for the Wongi.

By chance do you know someone with upcoming births, marriages, milestones, new locals to have their birthdays added or ad put into the Wongi. Any comments in passing, interesting activities happening in Woody?

Email- [shire@woodanilling.wa.gov.au](mailto:shire@woodanilling.wa.gov.au) with your comments, suggestions and updates

---

## DUE DATES AND DEADLINES

All contributions are to be sent to the new Wongi email or to the volunteers listed below; or may be left at the Woodanilling Store in a box provided or handed into the Shire office. Any queries, comments or complaints are to be directed to the Wongi Volunteer.

---

## ADVERTISING RATES 2024/2025

For black & white A4 advertisements per month:

Full page: \$66.00 - Half page: \$33.00 - 1/4 page: \$16.50 - Business card: \$8.25

To advertise in the Wongi, email: [shire@woodanilling.wa.gov.au](mailto:shire@woodanilling.wa.gov.au)

---

### **DISCLAIMER**

Due to the Trade Practices Act 1974, this publication accepts no responsibility for the accuracy or reliability of the contributors or advertisers. The publisher reserves the right to refuse matter considered unsuitable. The opinions expressed are not necessarily those of the Shire of Woodanilling or the Wongi volunteers.

---