



JUNE 2024



# THE HIGHLIGHTS

PAGE 1: WORDS FROM THE SHIRE  
PRESIDENT

PAGE 3: WORDS FROM THE CEO

PAGE 5: HAVE YOUR SAY!

PAGE 13: COMMUNITY GROUPS

TOP ROW: PHIL BURGESS (EMI), CR ROD MARSHALL, CR IAN GARSTONE & PAUL HANLON (CEO).

BOTTOM ROW: CR KAHLIA STEPHENS, DEPUTY SHIRE PRESIDENT RUSSEL THOMSON, SHIRE PRESIDENT DALE DOUGLAS & CR BEV SMITH



## WORDS FROM THE SHIRE PRESIDENT

The weather has cooled and winter has finally arrived with some very welcome rain. Councillors and Shire Officers went on a bus tour throughout the Woodanilling Shire looking at the Road Network and Infrastructure including Beaufort River Meats and the Fletchers Feedlot. This gave Councillors a chance to see our roads firsthand and to discuss with our Officers the shape, condition and any works that are required to be completed in the future. This was a very successful and beneficial day with a lot achieved.

As was mentioned in the last Wongi, we encourage everyone to have input into the Strategic Community Plan. This is a document that provides guidance to Council on the needs of the community for the next ten years.

The Shire has organised to have a 'Meet and Greet' on Saturday 22nd June 2024 at the Woodanilling Pavilion. The function was so that new and current members of the community could get together and have a catch up. The Shire has two new officers, Chief Executive Officer Paul Hanlon and Executive Manager of Infrastructure Phil Burgess who will be there to meet everyone. We will also be recognising our retiring Councillors from last year as well as our past CEO. Meat will be provided for a BBQ and we request that you bring a salad or sweet to share. BYO Refreshments.



# SHIRE NOTES

## WORDS FROM THE SHIRE PRESIDENT

The Shire has been included in a report on the effects of a Live Sheep Export Ban in seven shires within the Great Southern area and the consequences this will have on our communities. This information will be distributed to the various stake holders in the near future and will highlight how dramatically this will affect not only the Sheep Industry directly in our region but also our small businesses and communities. I personally do not support the ban on Live Sheep Exports which has not been supported by scientific evidence but by political pressure from conservative activists. The Federal Governments Transition package funding does not go close to covering the cost of the industry to transition into other areas to remain sustainable. Keep the Sheep.

After last years successful Woodanilling Art Exhibition as part of the Bloom Festival the shire has nominated to again hold the event in September. For further information or to make an expression of interest please contact the Shire. A reminder that our Council Meetings are on the Third Tuesday of each month and the community are most welcome to attend.

Cr Dale Douglas  
Shire President





# SHIRE NOTES

---

## WORDS FROM THE CHIEF EXECUTIVE OFFICER

Welcome to the official start of winter.

It has been great to hit the ground running over my first 5 weeks with the Shire.

At the May Council meeting, the Strategic Community Plan project was endorsed with community consultation set to be run over the month of June. Turn to page 5 of the Wongi to find out more details to have your say. This planning process is an essential part of ensuring the operations of the Shire are aligned to the aspirations of the community.

As the Shire President mentioned in his article, Council along with the Shire's Executive Manager of Infrastructure and I completed a tour of the Shire's road network and infrastructure. With the Annual Budget process underway, this tour highlighted priority projects that need to be completed over the next 12 months.

The Shire also welcomed members of our community to the Council meeting last month who highlighted the need to establish a group focused on local community enhancement. The Shire have been in contact with an organisation called Town Teams Movement who focus on building community capacity through placemaking at the local level. The wonderful thing about the Town Team Movement is that it is established at arm's length to Council which enables the group to be agile and not weighed down by the procedures that Local Government have to follow.

We are pleased to welcome Town Team Movement to the Shire for a 'Walk-Shop' through town on Friday 7th June between 2-3pm. I would encourage all members of our community who are interested in local placemaking to come along to learn more. We will meet at the Shire office at 1:45pm before heading on the walking tour through town.

Have a wonderful June.

Mr Paul Hanlon  
Chief Executive Officer





## NEWLY INSTALLED WATER TANKS FOR THE BUSHFIRE BRIGADE

The Shire of Woodanilling has reached a major project milestone within the Community Water Supply Program (CWSP) funded by Department of Water and Environmental Regulation (DWER) & The Shire of Woodanilling. This involved the install of a large water tank for the Community to assist the Bush Fire Brigades with bush fires as required and a steady consistent water supply. The enormous sand pad was put in place by Katanning Bob Cat Hire, with sands provided through Klopper Contracting in Kojonup. Price's Fabrication installed the 280,000 litre tank in less than a day. All throughout installation, the project was supported by the very professional DWER staff giving amazing guidance, advice and assistance to the Team. The next items of interest with the water tank(s) is the plumbing in of the 280,000 litre tank as well as trenching and piping all rain water from the Depot Building and Shire Office Buildings to supplement and increase our capture of this amazingly precious commodity. Watch this space for further updates into the future.



Mr Phil Burgess  
Executive Manager of  
Infrastructure



# SHIRE NOTES



## ***HAVE YOUR SAY!***

Take Part in the 2024-2034 Strategic Community Plan Survey  
We want your input to shape the future of the Shire of Woodanilling!  
Your feedback will help us understand what projects, services, and initiatives are most important to our community.

**SCAN ME!**



Our friendly staff at the Shire office are available to assist you with the survey.

Scan the QR Code:  
Quickly access the survey online using your smartphone.

or  
Visit the Shire Office:  
Fill out a paper survey or use our provided laptops to complete it online.

<https://www.surveymonkey.com/r/GVV867L>

☎ (08) 9823 1506

✉ [shire@woodanilling.gov.au](mailto:shire@woodanilling.gov.au)

[www.woodanilling.wa.gov.au](http://www.woodanilling.wa.gov.au)

PO Box 99, Woodanilling WA 6316



# SHIRE NOTES

## COMMUNITY MEET AND GREET

& send off for past Councillors & Staff

**Located at the Woodanilling Pavilion**  
**Saturday, 22nd June at 5pm**

Bbq meat will be supplied along with  
a small selection of salads.

BYO Drinks as well as a salad or sweet treat to share with  
your family and friends



Join us for a sizzling Woodanilling BBQ – come  
hungry, leave happy!

\*\*The Shire does not have the capacity to manage dietary requirements.\*\*



PO Box 99  
Woodanilling WA 6316

☎ (08) 9823 1506  
✉ [shire@woodanilling.gov.au](mailto:shire@woodanilling.gov.au)  
🌐 [www.woodanilling.wa.gov.au](http://www.woodanilling.wa.gov.au)

# SHIRE NOTES

## HEADING INTO WINTER

With winter creeping up on us we encourage members of the Woodanilling community to make sure you remain prepared for the coming months. Do a maintenance check on your vehicles if not completed already - Check your tyres, lights, window wipers and internal workings to ensure safety when on the road.

- Drive with your headlights on so you are visible to other drivers
- Slow down - especially when unsure, its a great idea to slow down and take it easy so you don't become a risk to yourself or others given the wetter setting.

With that we also encourage you to clean your gutters to prevent leaks, floods or overflow on your property. We hope this winter season treats you kindly.

## FALLEN TREE? KNOW WHO TO CALL:



Fallen tree or branches that have damaged your home or vehicle, making it unsafe:	Fallen tree or branches over your fence or in your yard:	Fallen tree or branches across a minor street or road:	Fallen tree across a major road or highway:
<b>SES</b> 132 500	<b>Private Tree Removal Company</b>	<b>Local Government</b>	<b>Main Roads WA</b> 138 138

For more storm safety information visit: [dfes.wa.gov.au/storm](https://dfes.wa.gov.au/storm)





# SHIRE NOTES

## SHIRE OF WOODANILLING BUSH FIRE CONTROL OFFICERS 24/25

In accordance with section 38(2E) and 39 of the Bush Fires Act 1954, the following people have been appointed by Council as Bush Fire Control Officers for the Shire of Woodanilling, commencing 1 July 2024. This will be a continuous appointment for the Shire, until revoked by Council in accordance with the Bush Fires Act 1954.

### **Bush Fire Executives**

Chief Bushfire Control Officer	Evan Hall
Deputy Chief Bushfire Control Officer	Lachlan Patterson
Senior Fire Control Officer 1	Bindi Murray
Senior Fire Control Officer 2	Jason Cronin
Fire Weather Officer	Jason Cronin
Deputy Fire Weather Officer	Bindi Murray

### **Bushfire Control Officers**

Beaufort/Kenmare	Bindi Murray
Boyerine/Westwood	Greg Doak
Central	David Coleman
Cartmeticup	Wayne Shackley
Glencoe	Braden Crosby

### **Harvest Ban Committee**

Chief Bushfire Control Officer	Evan Hall
Deputy Chief Bushfire Control Officer	Lachlan Patterson
Senior Fire Control Officer 1	Bindi Murray
Senior Fire Control Officer 2	Jason Cronin
Beaufort/Kenmare	Mal Baxter & Graydn Wilcox
Boyerine/Westwood	Greg Doak
Central	Ian Garstone
Cartmeticup	Wayne Shackley
Glencoe	Braden Crosby

### **Clover Burning**

Clover Burning Officer	Evan Hall
Clover Burning Officer	Paul Hanlon (Chief Executive Officer)

# COMMUNITY



## WAGIN / WOODANILLING LANDCARE ZONE

### Fauna Trapping— Year 9 Work Experience



We had Hayley Lloyd with us the first week of May to help complete some fauna trapping for our Community Fauna project. Hayley is a year 9 student at Wagin District High School and has an interest in Veterinary Science. She came out for the early morning starts to check traps and cameras. We were happy on day 2 to sight a phascogale on one of the cameras as they were not confirmed in this area before, and fortunately we trapped one on our last day so Hayley was able to see one up close for herself.



Bushnell Camera Name 57F11C C 05-09-2024 22:58:18



Bushnell Camera Name 53F11C C 05-07-2024 19:40:21



046F 07b 01/02/2011 20:13:02

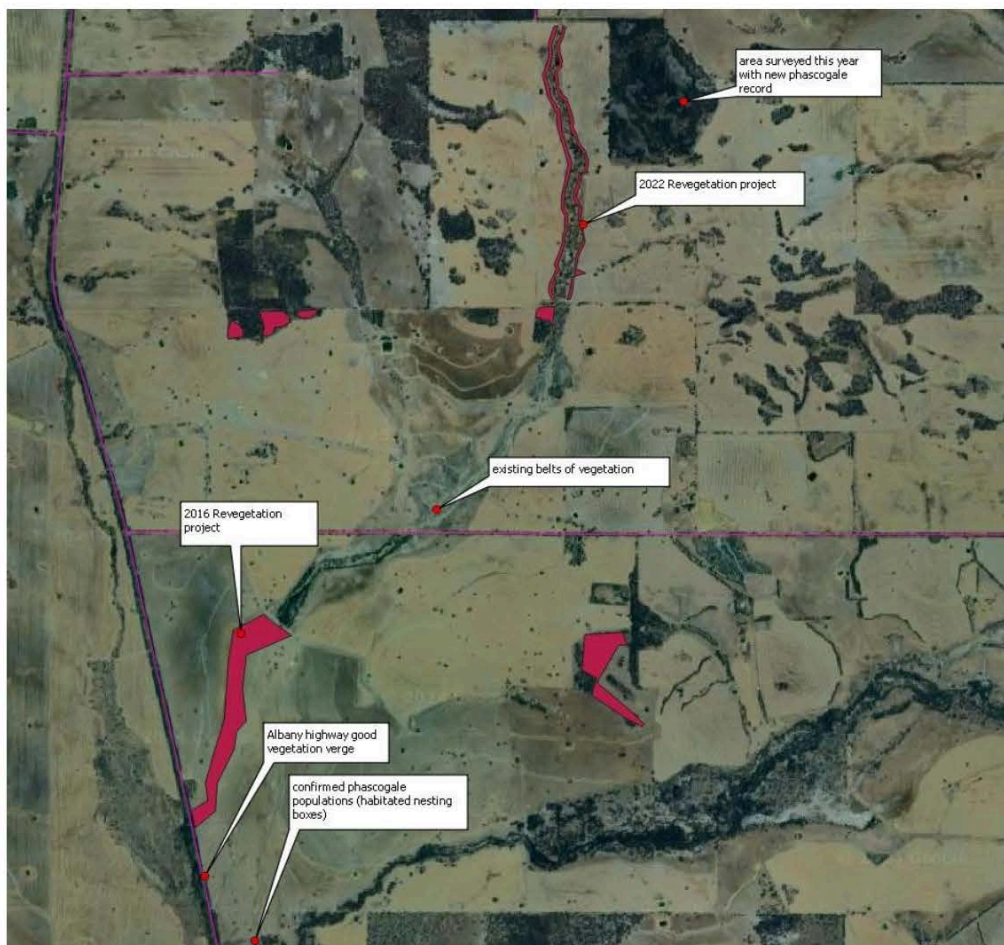


# COMMUNITY



## WAGIN / WOODANILLING LANDCARE ZONE

What is really exciting is that this remnant veg is now connected through the community fauna project revegetation planted in 2022, now spanning several kilometers down a creekline to vegetation planted in 2016 near the Albany Highway that links to phascogale habitat. So with our revegetation projects we have been able to successfully create a significant corridor link for different breeding populations that would otherwise be unlikely to reach each other. The latest revegetation is only young, but in a few years it will have the capacity to support phascogales moving across the landscape, with plant species chosen to suit their needs for forage and hollows.



# COMMUNITY



## WAGIN / WOODANILLING LANDCARE ZONE

### Tree planting season

Tree planting is almost upon us.... If you would like to hire any of our tree planting equipment, please let us know ASAP. There is an increasing demand for our tractor drawn tree planters, so it is advisable to at least get your intention to hire to Gen as soon as you can, please note that the hire cost has been increased due to the need for repairs and maintenance.

Hire will now be \$220/day inc GST.



The chatfield (above) is suitable for larger tractors, it requires a higher wheel based vehicle to pick up (e.g. land cruiser). The Kylera (below) is a smaller model that is not suited to larger tractors. This can be towed by any 4WD vehicle with a double tongue tow hitch.





# COMMUNITY

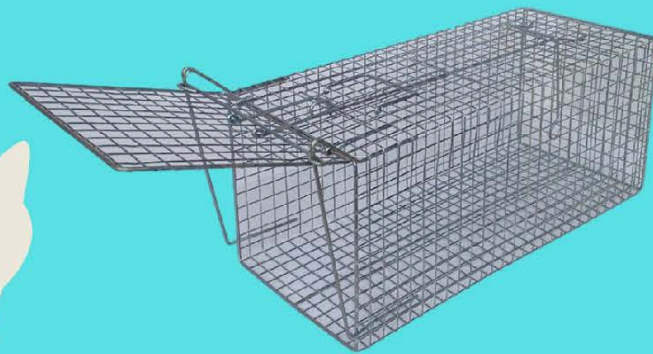


## WAGIN / WOODANILLING LANDCARE ZONE



### Do you have our cat trap?

We had a cat trap removed from the rear of the Shire office and do not know where it went. We are happy to hire it out, but we do need to be able to get it back.



Contact Gen at the WWLZ office or the Shire to let us know and we can log you as the current hirer. No penalties or charges involved.

Phone 0428 231 506 or email: [wwlandcare@westnet.com.au](mailto:wwlandcare@westnet.com.au)

# COMMUNITY



**PLAYGROUP**

Artwork created by our families for Mother's Day activity

**MOTHER'S DAY**

Benjamin Roy Hunter Eucalyptus Grevillea Daisy Rose Lantana Dallas

**UPCOMING DATES**

**13th June 2024 - CWA Cottage 9:30am**

**17th June 2024 - School 9:30am**

**27th June 2024 - CWA Cottage**

Playgroup meet Monday and Thursday alternating each week. For further information please contact Kahlia 0439 754 391

## WOODANILLING PLAYGROUP

## WOODANILLING PRIMARY SCHOOL

The Woodanilling Primary School Newsletter is now being introduced on Sway! To View simply double click the photo if you're accessing the Wongi via phone or computer or copy the link below to be directed to it via your web browser.

<https://sway.cloud.microsoft/3UWRLwatIDfDmFTt?ref=Link>





# COMMUNITY

## WOODANILLING CWA

After a busy start to the year, our next exciting community activity will be the Market Day on July 6th. This is open to anyone to set up a stall in the CWA grounds. A gold coin donation to CWA and your own table, tent etc. is all that you need to participate. The event coincides with the 100th Birthday of CWA in WA so come along and enjoy the celebration. We will be running the Cake Stall.

Our next meeting will be on June 17th at the cottage - all welcome. No doubt the Market Day will be on the agenda along with preliminary discussions regarding the upcoming Art Exhibition to be held in September.



## SHORT MAT BOWLS

Our run of disappointing numbers on Monday afternoons has continued but we soldier on with a Pairs competition and Jack Club where you play for individual glory! New members welcome - young or old - it's all in good fun and provides a social outlet on a dreary afternoon. 2.00 p.m. on a Monday at the Recreation Centre.



## WOODANILLING HOCKEY CLUB

**President:** Trevor Parminter

**Secretary:** Taran Becker

**Treasurer:** Morgan Doak

**Coaches**

**Women's:** Sally Vermeulen

**Men's:** Graham Treloar

**Middle school:** Penny Shackley

**J11:** Penny Shackley

**J7:** Pip Treloar

**Training Schedule:**

- Juniors: Monday at 3:30 PM, Wednesday at 4:30 PM
- Women: Tuesday at 6:00 PM
- Men: Wednesday at 7:00 PM

Each session lasts between 1 to 2 hours.



# COMMUNITY

## WOODANILLING HOCKEY CLUB

MENS B GRADE	
Williams	6
Woodanilling	5
All Blacks	3
Warriors	3
Olympics	3
Riffs	2
Dumbleyung	2
Wagin	0
Pingelly	0

J11	
Dingoes	12
Devils	12
Wickepin	9
Stingrays	6
Brookton	6
Williams White	6
Woodanilling	3
Williams Blue	0
Lakers	0

MIDDLE SCHOOL	
Lions	2
Tigers	1
Pumas	1
Leopards	1
Cougars	1
Panthers	0
Woodanilling	0

WOMENS B GRADE	
All Blacks	2
Pingelly	2
Woodanilling	1
Robins	1
Warriors	0
Wickipin	0

MIDDLE SCHOOL	
Lakers	2
Williams	1
Woodanilling	1
Dingoes	1
Stingrays	1
Devils	0



FIXTURES	
AWAY GAMES	HOME GAMES
Narrogin Thurs 13th June Middle School at 6.00pm	Saturday 8th June 2024 All Grades from 9.15am
Narrogin Saturday 20th June Middle School at 7.15pm	Saturday 15th June J11 at 10.30am
Narrogin Saturday 22nd June Women's B at 3.30pm	Saturday 22nd June J7 at 9.15am
Narrogin Thursday 27th June Middle School at 7.15pm	Saturday 22nd June J11 at 10.30am
Narrogin Thursday 18th July Middle School at 4.45pm	Saturday 29th June Men's B at 1.30pm
Narrogin Saturday 20th July J7 at 9.24am	Saturday 6th July Men's B at 1.30pm
Men's B Grade BYE 15th June	



# COMMUNITY

## JUSTICE OF THE PEACE

Did you know that we have 4 JP's in Woodanilling.

Ray Baxter - 9823 1546

Russel Thomson- 0419 950 217

Peter Bartholomeusz- 0447 771 511

Stephen Jefferies- 9823 1508



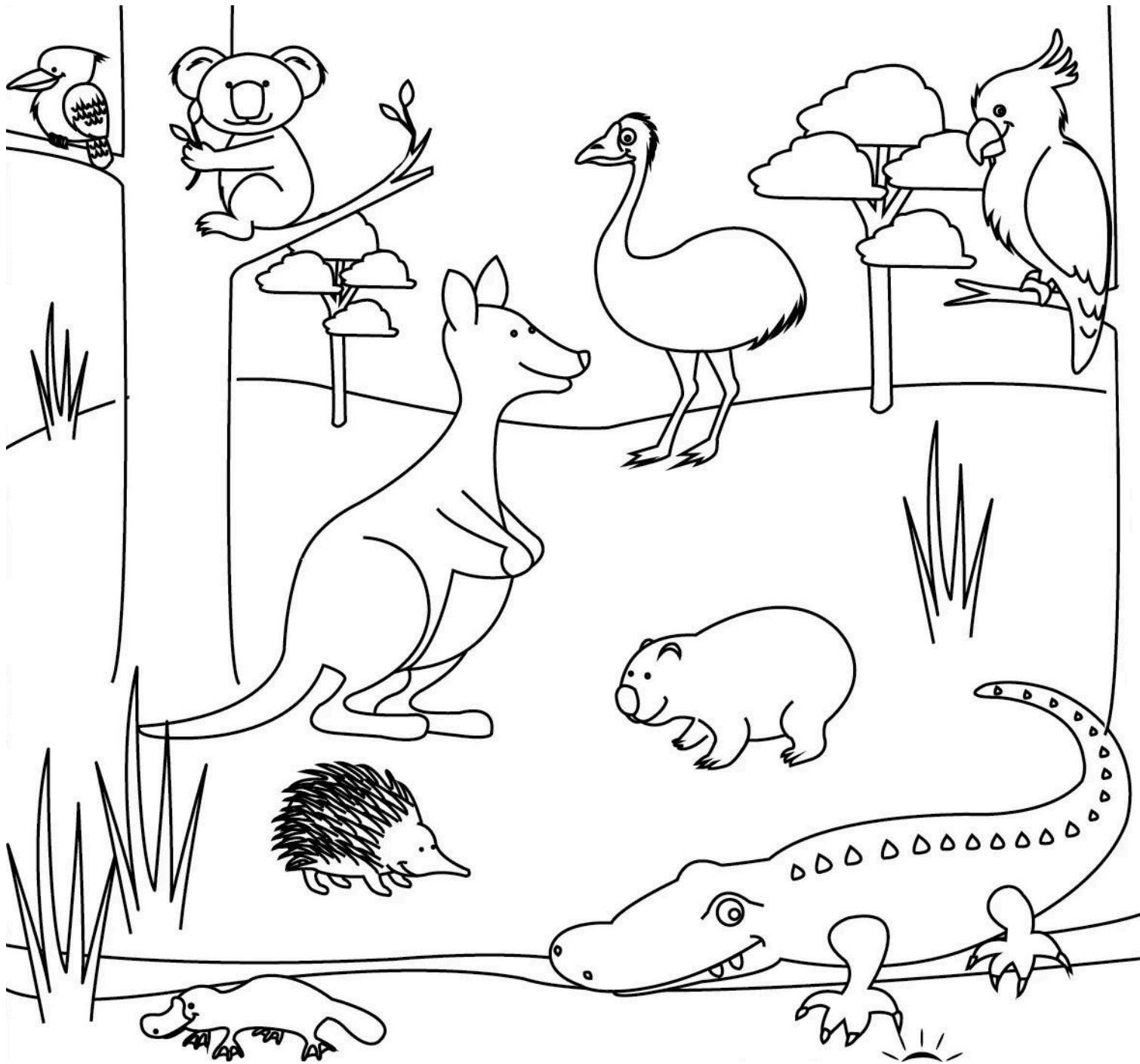
## SUPPORT OUR LOCAL WOODANILLING BUSINESS



THE WOODY SHOP

### Opening Hours

Monday	8:00 am - 5:00 pm
Tuesday	8:00 am - 5:00 pm
Wednesday	8:00 am - 5:00 pm
Thursday	8:00 am - 5:00 pm
Friday	8:00 am - 5:00 pm
Saturday	9:00 am - 12:00 pm
Sunday	Closed



What is your favourite animal & why?

---

---

---

Colouring In Competition- Submit your entry to the Shire Office or email [shire@woodanilling.wa.gov.au](mailto:shire@woodanilling.wa.gov.au)

We love to feature all children's drawings so please feel free.

**Please submit your name, age & contact details with your entry.**



# SHIRE NOTES

## WOODANILLING HISTORY AND MORE

The Shire of Woodanilling, located in Western Australia's Great Southern region, is approximately 250 kilometers southeast of Perth. Covering about 1,129 square kilometers, it is home to a close-knit community of around 400 residents. The name "Woodanilling" is believed to be derived from the Aboriginal Noongar language, meaning "place of little fishes." European settlers arrived in the late 19th century, with farming activities such as sheep grazing and crop cultivation laying the foundation for the local economy.

The construction of the Great Southern Railway in 1889 was a significant milestone, boosting connectivity and trade. In 1906, the Woodanilling Road District was officially gazetted, marking the start of structured local governance. The community developed infrastructure, including roads and public buildings, allowing growth and accessibility. The World Wars impacted Woodanilling, with many local men serving overseas, leading to changes in agricultural practices. Post-war modernisation improved farming techniques. In 1961, the district transitioned to the Shire of Woodanilling, enhancing local governance. The 20th century saw agricultural advancements and a strong sense of community. Recent decades have focused on environmental conservation and heritage preservation. Today, the shire continues to attract visitors with its scenic landscapes and rich history.



Woodanilling Cottage Hospital opening 1918

# RECIPES

## ORANGE CHICKEN

### INGREDIENTS

1.8kg organic chicken  
4 oranges  
2 garlic cloves, crushed  
4 rosemary sprigs  
3-4 fresh bay leaves  
1 cup (250ml) chicken liquid stock  
60g unsalted butter



### Step 1

Rinse chicken inside and out under cold water, then pat dry with paper towel. Juice the oranges. Quarter the juiced oranges and place in a large bowl with the juice, chicken, garlic and herbs. Cover and marinate in the fridge for 6-8 hours, turning the chicken occasionally. Preheat the oven to 190°C. Remove chicken from the bowl, reserving marinade.

### Step 2

Place 2 orange pieces and a rosemary sprig in the cavity of the chicken, then tie the legs together using kitchen string.

### Step 3

Season with salt and pepper, then place in a roasting pan with the remaining orange halves and the reserved marinade. Roast in the oven for 1-1 1/2 hours, basting occasionally with pan juices, until chicken is golden and juices run clear when a skewer is inserted into thickest part of thigh joint. Transfer the chicken to a serving plate and cover loosely to keep warm.

### Step 4

Skim the excess fat from the pan juices, then place the roasting pan over medium heat. Add the chicken stock and bring to the boil. Add the butter, 20g at a time, whisking constantly until combined. Season to taste with salt and freshly ground black pepper, then strain into a jug. Carve the chicken and serve with the orange sauce.

### Step 1

Grease a 3cm deep, 15.5cm x 25cm (base) slab pan. Line base and sides with baking paper, extending paper 2cm above edges of pan.

### Step 2

Place condensed milk and butter in a small saucepan over medium heat. Cook, stirring, for 5 minutes or until smooth and combined. Remove from heat.

### Step 3

Using a food processor, process biscuits until fine crumbs. Transfer to a bowl. Add coconut and lemon rind. Stir to combine. Add hot butter mixture. Mix well to combine. Press mixture over the base of prepared pan. Cover. Refrigerate for 1 1/2 hours or until firm.

### Step 4

Lemon icing: Sift icing sugar into a bowl. Add butter and lemon juice. Beat with a wooden spoon until smooth and combined. Spread icing over slice. Stand at room temperature for 30 minutes or until icing has set. Cut into pieces. Serve.

## LEMON SLICE

### INGREDIENTS

1/2 cup Sweetened Condensed Milk  
100g butter  
200g granita biscuits  
1 cup Desiccated Coconut  
2 tsp finely grated lemon rind

Lemon icing  
2 cups pure icing sugar  
20g butter, softened  
2 1/2 tbsp lemon juice





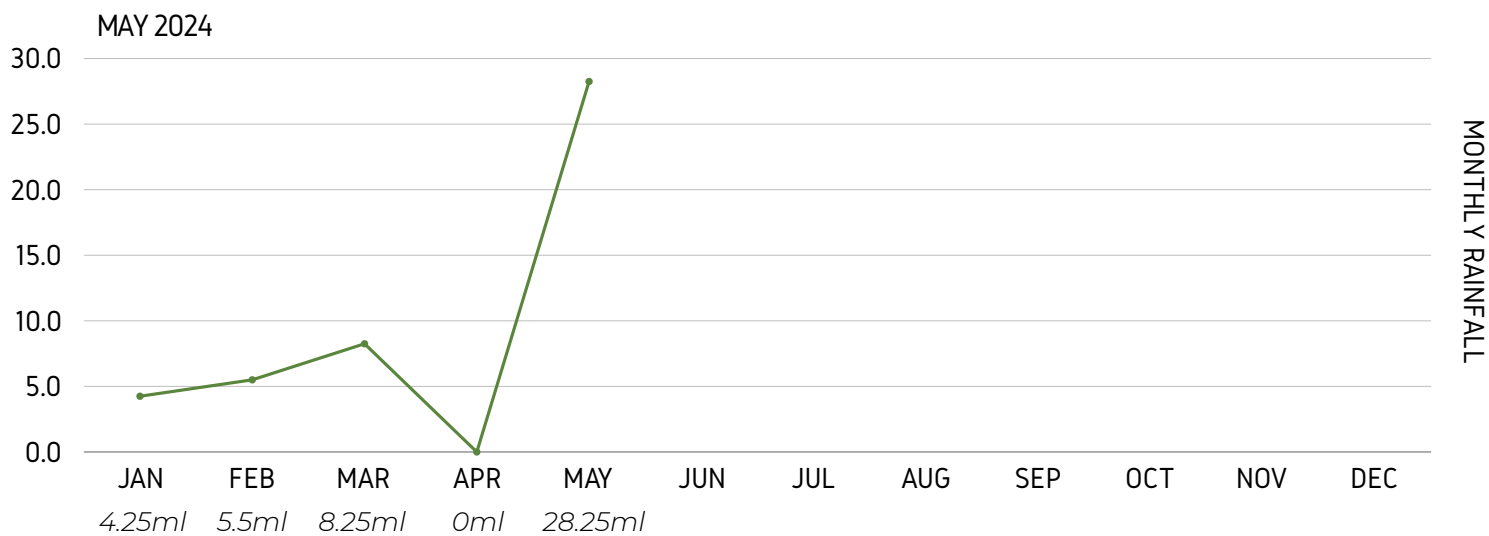
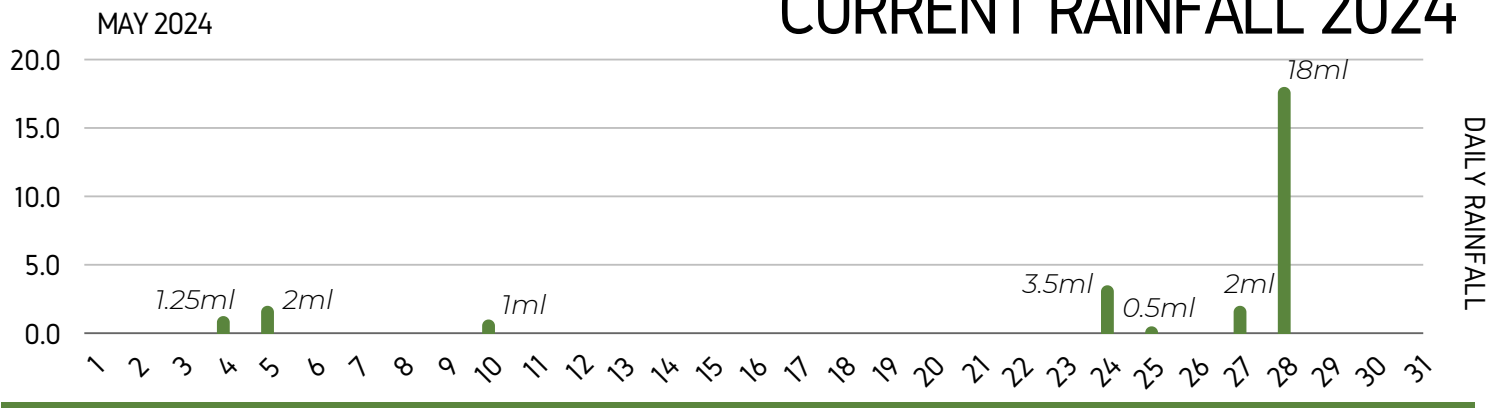


# COMMUNITY

## JUNE BIRTHDAYS

1st Karen Bessell-Browne	19th Rachel Crosby	29th Todd Dunstan
2nd Alexander Brown	22nd Fleur Roberston	30th Maxine Doak
2nd Bindi Murray	23rd Marg Thomson	30th Julene Cronin
7th Dave Moulden	24th Russell Doak	30th Ann Passfield
12th Jayden Bolt	24th Wendy Hall	
13th John Murray	25th Johnston Kerr	
15th Kym Smith	26th Billy Wise	
15th Gary Edwards	28th Molly Crossley	

## CURRENT RAINFALL 2024



Source: This information is provided by a local resident at their own property. This data is not intended to be part of an official record. All parties should conduct their own due diligence before relying on this information.

# COMMUNITY

## SHIRE EVENT CALENDAR

7th June	Town Teams Walk-Shop
18th June	Ordinary Council Meeting to be held 4pm in Council Chambers
22nd June	Community Meet and Greet
30th June	2024/2034 Strategic Community Plan Survey Closes



**HAVE YOUR SAY!**

Take Part in the 2024-2034 Strategic Community Plan Survey  
We want your input to shape the future of the Shire of Woodanilling!  
Your feedback will help us understand what projects, services, and initiatives are most important to our community.

Scan the QR Code:  
Quickly access the survey online using your smartphone.  
or  
Visit the Shire Office:  
Fill out a paper survey or use our provided laptops to complete it online.  
<https://www.surveymonkey.com/r/IGVY867L>

Our friendly staff at the Shire office are available to assist you with the survey.

**SURVEY CLOSES 30 JUNE 2024**

081 9623 1506  
shire@woodanilling.wa.gov.au  
www.woodanilling.wa.gov.au  
PO Box 99, Woodanilling WA 6316



**COMMUNITY MEET AND GREET**  
& send off for past Councillors & Staff

Located at the Woodanilling Pavilion  
Saturday, 22nd June at 5pm

Bbq meat will be supplied along with a small selection of salads.  
BYO Drinks as well as a salad or sweet treat to share with your family and friends

Join us for a sizzling Woodanilling BBQ – come hungry, leave happy!

PO Box 99  
Woodanilling WA 6316

081 9623 1506  
shire@woodanilling.wa.gov.au  
www.woodanilling.wa.gov.au



**TOWN TEAMS WALK-SHOP!**

We invite the community to join us at Shire Administration Office on Friday 7th June from 2–3 PM for a special Town Teams Movement (TTM) walkthrough in Woodanilling.

Weather permitting, the Town Teams Movement will walk us through Woodanilling exploring opportunities for local community placemaking. It's a great opportunity to see first-hand how the community can get actively involved in local enhancement initiatives.

In case of heavy rain, we'll switch to a traditional information session in the Shire offices.

081 9623 1506  
shire@woodanilling.wa.gov.au  
www.woodanilling.wa.gov.au  
PO Box 99, Woodanilling WA 6316

## WODDY AND SURROUNDS

Date	Location	Event
17 June	Katanning	Katanning High Tea
21 June	Katanning	Wine, Women & Wisdom
25 June	Wagin	Paint & Sip



**KATANNING HIGH TEA**

MONDAY 17TH JUNE 2024 | 2.00PM  
KATANNING CLUB, AMHERST STREET, KATANNING

Join us for a delightful Seniors High Tea with cakes, sandwiches, and hot drinks. Enjoy a relaxing afternoon of laughter and friendship, reconnecting with old friends and meeting new ones.  
We look forward to welcoming you!

\$10 PER PERSON  
RSVP BY WEDNESDAY 12TH JUNE  
BY CALLING 0477 493 141

KATANNING Regional Services  
Waggon Community Resource Centre  
KROS OP SHOP



**WINE WOMEN & WISDOM**

21 JUNE | AT 6.00PM - 10.00PM | 2024  
KATANNING CLUB, AMHERST STREET, KATANNING

Join us for a relaxed get-together for women of all ages to meet and enjoy each other's company. Delicious food, Good vibes, great conversations, and a chance to unwind together.  
Everyone's welcome, so bring along a friend or come by yourself and leave with a few more. Hope to see you there!

RSVP by calling or texting: 0477 493 141

\$20.00 PER PERSON



Waggon Community Resource Centre  
Your local connection  
Paint Supported by Department of Primary Industries and Regional Development

**Paint & Sip**

Tuesday 25th June  
6pm – 8.30pm \$50

Come and enjoy an evening of painting that's great for beginners.  
All resources provided (including aprons).

Nibbles and non-alcoholic drinks included, BYO permitted.

Limited places  
Contact the CRC:  
9861 1644  
Facebook  
admin@waggoncrc.net.au

Guided by local artist  
Linda Wirth  
"Australian theme"





Contact your local Area Manager, Chloe Turner

0447 469 245    [cturner@summitfertz.com.au](mailto:cturner@summitfertz.com.au)

Shires of Boyup Brook, Katanning, Kojoonup, Wagin and Woodanilling.

[www.summitfertz.com.au](http://www.summitfertz.com.au)




**Peter Rundle MLA**  
MEMBER FOR ROE

**Narrogin Office**

PO Box 378  
Narrogin WA 6312

Ph: 08 9881 1225

 @PeterRundleMLA  facebook.com PeterRundleRoe

E: [Peter.rundle@mp.wa.gov.au](mailto:Peter.rundle@mp.wa.gov.au) | [www.peterrundle.com.au](http://www.peterrundle.com.au)

**Esperance Office**

107 Dempster St  
Esperance WA 6450

Ph: 08 9071 6555



# Agricultural Dealership



Family owned Dealership with over 15 years industry experience, we are well placed to service and support a wide range of agricultural machinery, from small fixed plant to large modern broad acre equipment.



## KIOTI TRACTORS

- ✓ Tractor and implement sales
- ✓ Service and parts support



## BAD BOY MOWERS

- ✓ Mower Sales
- ✓ Service and parts support



## BROOKFIELD AGRICULTURAL PRODUCTS

- ✓ Machinery sales
- ✓ Service and parts support

Conveniently located at 152 Beaufort Street, Katanning.  
Call in to say hi and view our range.



**0459 977 449**

Damien Stephens



[www.totalagcentre.com.au](http://www.totalagcentre.com.au)



[Totalagcentre@outlook.com](mailto:Totalagcentre@outlook.com)



---

## WONGI CONTRIBUTORS

All contributions are to be sent to the new Wongi email or to the volunteers listed below; or may be left at the Woodanilling Store in a box provided or handed into the Shire office. Any queries, comments or complaints are to be directed to the Wongi Volunteer.

---

## WONGI CONTACT

For any inquiries, please contact Ciara Whitmore at 3316 Robinson Rd, Woodanilling WA 6316, or by phone at 9823 1506.



*NEW IDEAS ENCOURAGED!!*

We would love to see new suggestions and ideas for the Wongi.

By chance do you know someone with upcoming births, marriages, milestones, new locals to have their birthdays added or ad put into the Wongi. Any comments in passing, interesting activities happening in Woody?

Email- [shire@woodanilling.wa.gov.au](mailto:shire@woodanilling.wa.gov.au) with your comments, suggestions and updates

---

## DUE DATES AND DEADLINES

All contributions are to be sent to the new Wongi email or to the volunteers listed below; or may be left at the Woodanilling Store in a box provided or handed into the Shire office. Any queries, comments or complaints are to be directed to the Wongi Volunteer.

---

## ADVERTISING RATES 2024/2025

For black & white A4 advertisements per month:

Full page: \$66.00 - Half page: \$33.00 - 1/4 page: \$16.50 - Business card: \$8.25

To advertise in the Wongi, email: [shire@woodanilling.wa.gov.au](mailto:shire@woodanilling.wa.gov.au)

---

### **DISCLAIMER**

Due to the Trade Practices Act 1974, this publication accepts no responsibility for the accuracy or reliability of the contributors or advertisers. The publisher reserves the right to refuse matter considered unsuitable. The opinions expressed are not necessarily those of the Shire of Woodanilling or the Wongi volunteers.

---

**IF UNCLAIMED**

PLEASE RETURN TO  
PO BOX 99  
WOODANILLING WA 6316