



Woodanilling Wongi

June 2023



Please report any concerns over the winter months using SNAP SEND SOLVE

IN THIS ISSUE

Shire Notes, Community Land Care News, Community Activities,
Notices, Birthdays and Upcoming Events
All supplies and materials are kindly donated by the Shire of Woodanilling.

SHIRE NOTES

**TOWN DAM & PUBLIC OPEN SPACE- GRANT THROUGH
DEPARTMENT OF WATER AND ENVIRONMENTAL REGULATION
(DWER)**

A 280,00 litre water tank has been installed at the Woodanilling Recreation Reserve to increase the irrigation water storage capacity for the Woodanilling Sports Oval. This is part of the DWER Grant that was applied for. Works completed so far are:

Erected a 280,000 litre water tank at the Woodanilling Recreation Centre
Commenced storm water drainage with levelling to reduce pooling
Clearing of sump behind CBH to increase the storage capacity



SHIRE NOTES

WE NEED YOU!



Expression of interest for Woodanilling residents to exhibit their arts and crafts at the Shire of Woodanilling art exhibition to be held in the town hall from the 23rd of September 2023. This will be run during the Bloom Festival.

For further information and to register your interest please contact Sue Dowson and the Shire of Woodanilling on 9823 1506



Expressions of interest for Woodanilling residents to open their gardens as part of an open garden tour to be run during the Bloom Festival period from the 23rd September to the 31st October 2023.

For further information and to register your interest please contact Sue Dowson and the Shire of Woodanilling on 9823 1506



NEW EXECUTIVE ASSISTANT TO THE CEO

The Shire of Woodanilling would like to introduce, Lyn Mills to the team. Lyn has commenced as the new Executive Assistant to CEO.

For the past 15 years Lyn has worked in the non for profit organisations in positions of support, administration and management.

Lyn moved to Katanning with my husband in November last year. I like to spend my time in the garden.

Lyn is thrilled to be given the opportunity and look forward to meeting you all

SHIRE NOTES

WOODANILLING LIBRARY

Cooler Weather got you down?

Grab a book from the Shire Library, snuggle up with a cuppa and have a good read.

Pop into the Shire Library and check out our latest in kids books and junior fiction.

Don't feel like reading?

At the Shire Library we also have a range of DVDs and audio books for your enjoyment,

Join the Shire Library today, its free! New titles have just arrived.



WINTER IS COMING- CHECK YOUR VEHICLE!

With Winter just around the corner the Shire of Woodanilling is encouraging all drivers to make sure you and your vehicle remain safe by completing maintenance checks of tyres, lights, wipers, fluids and battery before and regularly during winter..

As well as ensuring their vehicle is well maintained other strategies to stay safe on our roads during winter the Shire of Woodanilling are encouraging drivers to follow are:

- Drive with your lights on at all times to make it easy for other drivers to see you.
- Slow down. It is a good idea to drive slowly and carefully in general, but travelling at high speeds is even more dangerous during winter.
- Leave more space between yourself and the vehicle in front of you, as breaking/stopping distances on wet roads are increased.
- Check the weather forecast when planning your trip and try to avoid driving during sever storm conditions



SHIRE OPENING HOURS

Office Hours - 9:00am to 4:30pm Monday through to Friday

Receipting Hours - 9:00am to 4:00pm Monday through to Friday

Tip Hours - Thursday 9am - 1pm,

Saturday 12pm - 5pm, Sunday 2pm - 5pm

E- WONGI EMAIL SUBSCRIPTION

You are invited to join our E-Wongi email list. If you would like to access the latest information, please email the Shire of Woodanilling at

shire@woodanilling.wa.gov.au

The Shire will not disclose your personal information to third parties at any time.

WOODANILLING PLAYGROUP

Playgroup meets weekly and alternate between the School, Park, Rec Centre and CWA building. Sessions are advertised on our Facebook page and via WhatsApp.

Playgroup at the school has commenced and we will continue sessions on the school grounds fortnightly. Our first meet back at the school was enjoyable with our families making Easter hats and joining in with the school children for a hat parade and egg hunt. Thank you to Principle Michelle Williams for assisting with establishing regular sessions at the School.

We are also very grateful to CWA for allowing us to use the cottage. Our families really enjoy this space and have made some wonderful artwork and even had a go at some baking! special mention to Pauline for all her help on the days we meet at CWA. We all very much appreciate your help and company.

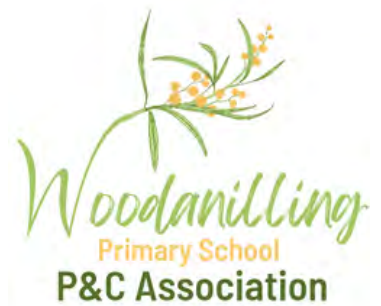
Upcoming dates (Days are subject to change so if you are new please contact us)

- 5 June 2023 - Woodanilling CWA
- 12 June 2023 - Woodanilling Primary School
- 19 June 2023 - Woodanilling CWA
- 26 June 2023 - Woodanilling Primary School

For more information please contact Kahlia 0439 754 391.



WOODANILLING P & C



We recently held our AGM & elections, which means our team currently comprises of:

Danielle Perrie -President

Brooke Moulden - Vice President/ Uniform Coordinator

Bindi Murray - Secretary

Kahlia Stephens - Treasurer

Tegan Wise - Member

We have 5 active families volunteering/fundraising for the association with back up support from WPS staff and local community members.

Compared to larger scale schools we are a very small P&C. This means we take on as many fundraising opportunities as we can and that EVERY SINGLE DOLLAR raised is important in succeeding with our goals!

We can't thank the Woodanilling and Katanning communities enough for their continued support of our fundraising efforts.

2023 looks like a busy year for us (again), and we have a few ideas and goals set out for this year that will benefit the WPS children and hopefully enrich their schooling further. Once we have these finalized, we can't wait to share them all with you, so that you all can see exactly where our fundraising is going and why we have been working so hard to build funds up.

So please stay tuned and follow along with us either here in the Wongi, the WPS newsletter or our social media to keep up to date!

Thank you

Woodanilling Primary School P&C Association

WOODANILLING P & C

On Friday 19th May 2023 the Woodanilling Primary School P&C Association joined students, staff, community and Katanning Police Officers, Sergeant Luke Chantler, Cadet Montanna Campbell and Senior Sergeant Tommy Briscoe for National Walk Safely to School Day.

Even though the morning was slightly chilly, everyone gathered at the Woodanilling War Memorial and soon warmed up while enjoying the walk to school.

Upon arriving back at school, the P&C were lucky to be able to celebrate WA P&C Day with students and staff gifting us all with goodie bags of chocolates and a lovely thank you necklace the children had made.

Our dedicated President Danielle whipped up some freshly cooked pikelets, which everyone enjoyed with fresh fruit, syrup & hot chocolate!

It was a lovely morning enjoyed by all and we are sure the kids thoroughly enjoyed a different start to their school day!



PRINCIPAL'S ADDRESS

Dear Parents and Carers,

Students have been busy working hard and developing their skills and knowledge to demonstrate how they can apply it in a variety of activities. End of semester reports are being prepared and teachers are observing and identifying how students are progressing to make their final judgements.

The ACER Progressive Achievement Test (PAT) is a normed assessment that can rank student outcomes against all Australian children. It is one piece of evidence we use to support teacher judgement. An important part of analysis of data is understanding why a student chose an answer, especially in maths. To support problem-solving in maths we are introducing Newman's Error Analysis which breaks down the five steps involved in solving a mathematical word problem. A key part of problem-solving is taking the time to understand the question and then how to solve it as there may be many options.

Brightpath is another measurement tool we use for writing and can be applied to many types of writing. Students complete a 'cold task' on a topic and the teacher identifies the teaching points that need to be addressed. They work on these for several weeks and then complete a 'hot task' as a measurement against normed samples, thereby providing a moderation for their work. We are also investigating the Brightpath Maths which gives instant data and information about students' mathematical ability. Brightpath has been endorsed by the School Curriculum and Standards Authority (SCSA), our governing body, that is responsible for Kindergarten to Year 12 curriculum, assessment, standards and reporting for all Western Australian schools.

In previous schools, I have sent end of semester reports home via email and would like to introduce that process at Woodanilling PS. The reports are set up to send an email to each family email and it contains a link to open the report. Once opened, you can save the report on your computer. We have all family email addresses and frequently send information home using these, so I feel confident it will be successful. If a printed copy is needed, just come and ask at the office.

If you have any objections or need further information about the process, please come and see me.

Michelle Williamson
Principal





Kindergarten enrolments are now open for 2024

If your child turns 4 years old before 30th
June 2024, apply to enrol now at
Woodanilling Primary School





WAGIN / WOODANILLING LANDCARE ZONE

Carbon Farming for your Future 27th June—Save the Date!

Would you like to know more about Carbon Farming and the Carbon Credits Fund? Have you considered getting involved but confused about the details?

The DPIRD Low Carbon Futures Department have a producer focused half day event program that aims to answer your questions and provide some guidance around the specifics of future carbon projects. Whether you are seeking to offset your own emissions, or set up an Australian Carbon Credit Unit (ACCU) site for market investment, it will be worth your while to attend one of these events.

Information covered in the event includes:

Why Carbon Farming

We cover the reasons why you would undertake a soil or vegetation-based carbon farming project and the benefits to your farm business.

Is Carbon Farming right for your business?

Would a Carbon Farming project make sense on your property? Let's find out! We take you through how to use tools to assess viability.

Designing a Carbon Farming Project

Find out who to talk to, what steps to take and when to take them. Gain access to templates and resources created by DPIRD to assist your planning.

Help and Funding Available

Find out if you are eligible for funding through one of DPIRD's Carbon Farming programs and other help we can provide.

The Future

The net zero future of carbon farming is exciting, there are many developments underway in the form of bioenergy and biofuel, insetting and more!

We are planning to host one here in Woodanilling on 27th June. Details are yet to be confirmed but would like to hear from you if you would like to attend.





27 JUNE

SAVE THE DATE!!

CARBON FARMING FOR YOUR FUTURE

**Woodanilling Pavillion
Yairabin St Woodanilling**

Event details to be confirmed

Early bird registration welcome

WHY CARBON FARMING?

We cover the reasons why you would undertake a soil or vegetation-based carbon farming project and the benefits to your farm business.

IS CARBON FARMING RIGHT FOR YOUR BUSINESS?

Would a Carbon Farming project make sense on your property? Let's find out! We take you through how to use tools to assess viability.

DESIGNING A CARBON FARMING PROJECT

Find out who to talk to, what steps to take and when to take them. Gain access to templates and resources created by DPIRD to assist your planning.

HELP & FUNDING AVAILABLE

Find out if you are eligible for funding through one of DPIRD's Carbon Farming programs and other help we can provide.

THE FUTURE

The net zero future of carbon farming is exciting, there are many developments underway in the form of bioenergy and biofuel, insetting and more!

REGISTRATION:

0428 231 506



wwlandcare@westnet.com.au



FURTHER INFORMATION:

agric.wa.gov.au/LCF



**Department of
Primary Industries and
Regional Development**



WAGIN / WOODANILLING LANDCARE ZONE

Grower Group Alliance Funding for Innovative Drought Management Ideas

Do you have an idea to make your business more drought resilient?

Grants valued between **\$2,000** and **\$10,000** are available to growers ready to take a pad-dock idea to the R&D phase.

Ideas and innovation to improve efficiency and process often come from those doing the 'doing'. However, there is a gap that arises between an idea coined on the job and developing a product, practice or process.

This pilot grant round offered by GGA and CSIRO is designed to close the gap.

The objective of the 'Emerge Program' small grants round is to facilitate the development of ideas that will help WA farmers and the agri-food sector prosper in hotter and more variable climates and build greater resilience to more frequent seasonal droughts.

The grant round includes support from experts at CSIRO and GGA to make the jump from producer to developer more accessible.

The 'Emerge Program' is not a commercialisation program. It is an innovation preparation phase, where the focus is about identifying potential and further developing ideas to the stage where they are ready for research, development, and commercialisation.

If you have an idea, have been trialling something at home but not sure where to go from there.... This funding and support program may be the next step you need.

If you would like to know more about the Emerge Program you can go to:

<https://www.gga.org.au/activity/emerge-program-grants/>



**GROWER
GROUP
ALLIANCE**
Together we grow





The Woodanilling Men Shed

Ill health and holidays have impacted our Shed in the past couple of months unfortunately not allowing us to provide any news but now we are back on track and we will be getting on with things.

Firstly to the young lady who asked us to have a look at her picnic table, Sorry but I have lost your contact details so if you could call in and give us a reminder it would be appreciated.

We are currently in the midst of making a large spit for outdoor cooking, it's a slow progress but it is going forward. Hopefully when completed we will be able to hire or loan it out.

WHAT ARE MENS SHEDS

Men's Shed provide a place where men can feel included and welcome, where they can work on their own projects, learn new skills, create and maintain friendships.

You don't have to be a regular visitor, you don't even have to like woodwork. Inside Sheds you'll find a range of activities. Being a small Shed our activities are limited but only limited by someone wanting to do whatever it is.

Mateship and Camaraderie are two fact's that have been proven to create a healthy and long life along with Being part of a Community and Feeling Productive.

Men who attend Sheds and maintain friendships are more likely to:

- enjoy a better quality of life
 - feel less lonely
 - feel a sense of purpose
- lower their health risk including dementia.

Remember Loneliness can be more dangerous than obesity, and be as damaging to your health as smoking 15 cigarettes a day

You can contact us at the Shed or by phone;

President: Brian Paddon 04073387010

Vice President: Steve Fitzpatrick 0410393296

Secretary: Rod Marshall 0437014941 (leave a message)



WOODANILLING CWA



CWA is looking for an upgrade with our recent application for a grant to put in a reverse cycle air conditioner, a hot water system and repair back and front steps. Our fingers are crossed as these upgrades will improve the safety and ambiance of the cottage which now is the fortnightly home to Woodanilling Playgroup. We had a lovely time on Monday playing with clay - making shapes. Just quietly, I think the Mums had just as much fun as the kids! No doubt we all are praying for rain to water gardens, fill tanks and obviously to put in crops so cheers for a wet June!

Woodanilling CWA is a proud and active women's organization working to improve the welfare and wellbeing of people.

CWA is open for women of all ages and provides friendship, fun, support, community service and personal development.

We would love more of the local young women of Woodanilling to join us, you are the future.

Please contact **Pauline on 0439 922 311** or **Barb on 0417 180 361** for more information on how to join.

FREE FLU VAACCINES

Free Flu Vaccines are available at the participating pharmacies and GP's

Katanning Pharmacy

Great Southern Community Chemist

St Lukes Family Practice



WOODANILLING COMMUNITY CHURCH

Church Service 10am every Sunday.

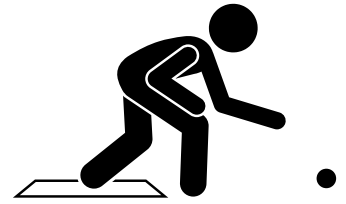
Come and give praise to God and feel the holy Spirit uplift your soul and take away your fears.

There is movement happening in this church.

We invite you to come and be part of it.

More info. Contact Marion Taylor 0422337857

SHORT MAT BOWLS



Come and give it a go!! Games will start at 2.00pm

Cost is \$3.00 per head which includes tea and biscuits!

Games are played over 9 weeks followed by the finals

You will be made most welcome For more detail please contact -

ROD MARSHALL OR PAULINE

WOODANILLING HOCKEY CLUB

WRHC executive for 2023 is

President: Lance Mudgway

Vice president: Trevor Parminter

Secretary: Tegan Wise

Treasurer: Sally Vermeulen with Taran

Becker to learn the ropes to take over in 2024

Home game dates- Saturdays are:

18/6

24/6

18/6

29/7

12/8

19/8

We cater for all different age groups and abilities with four different junior teams as well as Women's B grade and Men's B grade.

Junior Competitions include:

J7 - School years 2 and 3

J11 - School years 4, 5, 6

Middle School - Years 7, 8, 9

Upper School - Years 10, 11, 12

Coaches

Women's: Sally Vermeulen

Men's: Graham Treloar

Upper school: Penny Shackley

Middle school: Penny Shackley

J11: Penny Shackley

J7: Kahlia Stephens & Pip Treloar

Training days at Woody sports oval

Tuesdays:

Middle & Upper School 4.30pm contact

Penny Shackley 0428 228 065

Women's 6:15pm contact Sally Vermeulen

0417 096 389

Wednesdays:

J7 (school years 2 and 3) and J11 (school

years 4, 5, 6) 4.30pm contact Penny

Shackley 0428 228 065

*Minkey will start on Wednesdays on 3rd

May for 9 weeks (yrs PP and yr 1)

Thursdays

Men's 6:30pm contact Graham Treloar

0430 021 475

WOODANILLING RANGERS HOCKEY CLUB

Competition tables as of 29/5/23



Men's B Grade

1. Woodanilling	15 points
2. Dumbleyung	9 points
3. Williams	9 points
4. Warriors	9 points
5. All Blacks	7 points
6. Riffs	4 points
7. Olympics	3 points
8. Pingelly	3 points
9. Wagin	0 points

J7

1. Brookton	4 points
2. Woodanilling	4 points
3. Stingrays	4 points
4. Dingoes	4 points
5. Williams	3 points
6. Lakers	3 points
7. Bulldogs	3 points
8. Devils	3 points

Women's B Grade

1. Williams	12 points
2. Wagin	12 points
3. Brookton	7 points
4. Warriors	6 points
5. Wickepin	4 points
6. All Blacks	2 points
7. Woodanilling	1 point
8. Robins	1 point

J11

1. Brookton	12 points
2. Bulldogs	9 points
3. Stingrays	9 points
4. Woodanilling	6 points
5. Dingoes	3 points
6. Devils	3 points
7. Lakers	3 points
8. Wickepin	3 points
9. Williams	0 points

Upper School- Boys

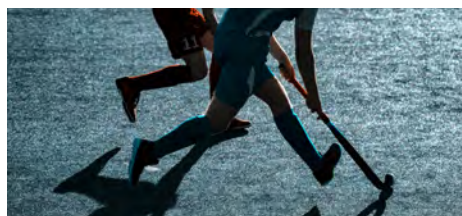
1. Eagles	8 points
2. Toucans	7 points
3. Falcon	7 points
4. Vultures	0 points

Middle School- Boys

1. Cougars	9 points
2. Tigers	9 points
3. Lions	6 points
4. Panthers	0 points

High School - Female

1. GSWD	10 points
2. AFGRI Deeres	8 points
3. Nutien Ag Strikers	2 points
4. Byfields Bullets	1 point





WHAT TO DO WHEN A WARNING IS ISSUED?

Do you know what to do if you find yourself in a Severe Weather Warning area?

- Store or weigh down loose objects around your home, like outdoor furniture that could be picked up and thrown by strong winds.
- Ensure your emergency kit is complete, including a battery operated radio, torch, spare batteries and first aid kit.
- Ensure pets and animals are in a safe area.
- Move vehicles under cover.
- Charge mobile phones and devices in case of a power outage.
- Unplug electrical appliances and avoid using landline telephones if there is lightning.
- Securely moor boats.

For more storm safety info visit dfes.wa.gov.au/storm



DFES
Department of Fire &
Emergency Services



2023 Recycling Calendar – July - December

July							August							September						
S	M	T	W	T	F	S	S	M	T	W	T	F	S	S	M	T	W	T	F	S
						1			1	2	3	4	5						1	2
2	3	4	5	6	7	8	6	7	8	9	10	11	12	3	4	5	6	7	8	9
9	10	11	12	13	14	15	13	14	15	16	17	18	19	10	11	12	13	14	15	16
16	17	18	19	20	21	22	20	21	22	23	24	25	26	17	18	19	20	21	22	23
23	24	25	26	27	28	29	27	28	29	30	31			24	25	26	27	28	29	30
30	31																			

October							November							December						
S	M	T	W	T	F	S	S	M	T	W	T	F	S	S	M	T	W	T	F	S
1	2	3	4	5	6	7				1	2	3	4						1	2
8	9	10	11	12	13	14	5	6	7	8	9	10	11	3	4	5	6	7	8	9
15	16	17	18	19	20	21	12	13	14	15	16	17	18	10	11	12	13	14	15	16
22	23	24	25	26	27	28	19	20	21	22	23	24	25	17	18	19	20	21	22	23
29	30	31					26	27	28	29	30			24	25	26	27	28	29	30
														31						

What can be recycled?

Glass jars & bottles

Rinsed. Lids removed. No table glassware (e.g. drink glasses)

Cans & foil products

Aluminium & steel food & beverage cans, aluminium & foil products. Rinse cans & wipe foil. Attached lids are ok.

All milk and juice cartons

Rinsed. No silver lined UHT cartons.

Plastic bottles, containers & lids

Rinsed. Soft drink, milk & detergent bottles with recycling symbols 1, 2, 3 or 5.

Mixed paper

Newspapers, cereal boxes, frozen food boxes, office paper, junk mail, shredded paper, magazines & phone books

NO plastic wrap or bags, disposable coffee cups, Styrofoam, polystyrene, batteries, nappies, garden waste, food scraps, paint tins, clothing, building rubble or kitty litter.



Interested in a career in Early Childhood?
Come along to the Early Childhood Industry Career Expo on 23 June 2023 and find out all the info you need to start your future career goal!



START A CAREER IN EARLY YEARS! JOIN THE EXPO 2023

**JUNE 23, 1:30PM - 3:30PM
KOOBELYA, KATANNING**



For more information, contact Amanda at abaxter@wanslea.org.au
Or visit our FB page Central Great Southern Expo

Educate & Empower

CENTRAL GREAT SOUTHERN
EARLY YEARS EXPO 2023

**BOOK YOUR
TICKETS NOW!!!**



**FREE EVENT
FOR FAMILIES & EDUCATORS**

**JUNE 24, 2023
8:30AM- 4:30PM
KOBEELYA, KATANNING WA**

For more information, contact Amanda at abaxter@wanslea.org.au
OR VISIT OUR FB PAGE CENTRAL GREAT SOUTHERN EXPO TO SECURE YOUR TICKET

Central Great Southern Early Years Expo

- 8am – Registration
- 8.30am - Welcome to Country
Introductions and housekeeping
- 8.45am - Official Opening
- 9am – 10.15am – Key note speaker and questions
Claire Orange – Child and Family Mental Health
- 10.15am – 10.45am – Morning Tea
- 10.45am – 11.15am Empowered parent
- 11.15am – 12.30pm – Key note speaker and questions
Holly-Ann Martin – Protective Behaviours
- 12.30pm- 1.15pm – Lunch
- 1.15pm – 1.45pm Launch of Brain App
- 1.45pm- 3pm - Key note speaker and questions
Kelly Oldfield – Child Development and Behaviour Specialist
- 3pm – 3.30pm – Afternoon Tea
- 3.30pm – 4.30pm - Hands on experiences

Slow cooked beef ragu

The cooler weather has well and truly set in and there's nothing better than coming home to the smell of dinner wafting through the kitchen. Get the slow cooker out of the cupboard for this Australian Beef recipe that promises to deliver on flavour and only takes 15 minutes to prepare.



INGREDIENTS

- 1.2kg piece beef chuck or beef bolar blade
- 2 tbsp olive oil
- 1 medium onion, diced
- 4 cloves garlic, thinly sliced
- 1 tbsp plain flour
- 1½ cups Beef stock
- 400 g can cherry tomatoes or diced tomatoes
- 3 sprigs fresh thyme
- 2 small char-grilled capsicums, thinly sliced (optional)
- ½ cup small fresh basil leaves
- Pasta and grated parmesan, to serve

METHOD

Cut Beef into four or five large pieces. Season with salt and pepper, and drizzle with a little olive oil. Heat a large fry pan over a medium-high heat. Brown the pieces of Beef well on all sides. Remove and place in slow cooker bowl. Reduce heat, add a little oil to the fry pan and onion and garlic. Cook for 1–2 minutes, stirring occasionally. Add the flour and stir to scrape up residue from the base of the pan and ensure the onion is coated with the flour. Gradually pour in the stock and stir until the mixture boils. Pour over the Beef in slow cooker dish. Add the tomatoes and thyme and a small pinch of sugar. Cover the slow cooker with its lid, cook on low setting for 6–8 hours and then 1 hour on high setting (if you have time). Alternatively, cook on the high setting for 4–5 hours. To serve, shred the Beef with two forks. Stir in the roasted capsicum and basil leaves. Serve over pasta and sprinkle with parmesan.

Sudoku

LEVEL: MEDIUM

	3		7	6		9		
		1		2		3		8
6	7		3	5	8	2	1	
	4			8	7	5	3	
	2				5	8	8	1
		5	6			4		7
		8	1	7	8	6		
8	8	7		4	2			3
							9	

1		6	3	2				
4			5			1		
					6	5		
					2			
		8				9	6	
		4	1	7	9		5	8
8								5
7			9					
			2		5	6		

			8	3				
2	7	3					4	
			2	7			5	3
9						7		1
		6			8	6		4
							8	
					1	3		
8							1	
	1	7			2			

	4	2	8				5	
		3					4	
		5			2	3		
1		7	3		6	4		
2				8				
5							7	
			7	3		6		
			2	8		1	7	
					9	2		4

SUPPORT OUR LOCAL WOODANILLING BUSINESS



THE WOODANILLING TAVERN

We will open Monday, Tuesday & Wednesday for group bookings only

Thursday & Friday- 4pm to late Saturday & Sunday- 12pm to late

Remember to always book due to restrictions-

9823 1508 or 0427 479 423.

WHEN YOU ARE SUPPORTING A SMALL BUSINESS YOU ARE SUPPORTING A DREAM

THE WOODANILLING GENERAL STORE

Monday, Tuesday, Thursday & Friday 7.30am to 3pm

Wednesday 7.30am to 12.00pm

JUSTICE OF THE PEACE

Did you know that we have 4 JP's in Woodanilling? Well we have and they are:

Ray Baxter - 9823 1546

Russel Thomson- 0419 950 217

Peter Bartholomeusz- 0447 771 511

Stephen Jefferies- 9823 1508



JUNE BIRTHDAYS

1st Karen Bessell-Browne	27th Teague Castle
2nd Alexander Brown	28th Molly Crossley
2nd Bindi Murray	29th Todd Dunstan
7th Dave Moulden	30th Maxine Doak
12th Jayden Bolt	30th Julene Cronin
13th John Murray	30th Ann Passfield
15th Kym Smith	
15th Gary Edwards	
19th Rachel Crosby	
22nd Fleur Roberston	
23rd Marg Thomson	
24th Russell Doak	
25th Bev Crosby	
24th Wendy Hall	
25th Johnston Kerr	
26th Billy Wise	

MONTHLY RAINFALL 2023

JAN	7.2
FEB	0
MAR	12.6
APR	28.8
MAY	24.4
JUN	
JUL	
AUG	
SEP	
OCT	
NOV	
DEC	

Woodanilling Rangers Hockey Club
coaster bus is available for hire.
To book please contact
Lance Mudgway- 0428 546 971

EVENT CALENDAR

5th June	WA Day- Public Holiday
20th June	Ordinary Council Meeting to be held 4pm in Council Chambers

Seniors GYM
For Ages 55+
1:30pm-2:30pm **FREE**
Tuesdays & Thursdays
Katanning Leisure Centre
Gymnasium
Stay active in a safe supervised environment.
For more information, Please contact
Ciara
on 9821 4399

Wammco International 132nd
KATANNING AGRICULTURAL SHOW
Katanning Show Grounds Pemble Street Katanning
Friday 27th October & Saturday 28th October

FREE GATE ENTRY

Side Show Alley - Yard Dog Trials International Food Court -
Face Painting Stalls - Shearing Competition - Show Bags
Dog High Jump - Vintage Machinery Display
Pony Competition - Fireworks

www.katanningshow.org.au



We know your soil because we **dig deeper** into the data

Soil test with inSITE, our industry leading soil analysis program



- Independent laboratory.
- Rapid turnaround times.
- Wide range of analytes measured.
- Product recommendations based on results.
- Support from your experienced Area Manager.
- View results on SummitConnect.
- Customer owned data.



**Speak with Chloe
to learn more**

Mobile: 0447 469 245

Email: cturner@summitfertz.com.au

We're hiring in Woodanilling

Follow your passion with a career in aged care. Catholic Homes has been providing aged care for over 50 years in Western Australia and are looking for people to join our Home Care team.



We are looking for caring and passionate nursing and support workers for our home care services in the Great Southern.

Our Care with Purpose people-centred care model promotes dignity, respect, privacy and independence.

As a not-for-profit organisation, we are inclusive and welcome all faiths and backgrounds.

We offer competitive hourly rates, casual loading and full training. We have both permanent and casual roles available now.

*If you would like to discuss further call 1300 244 000
or email your CV to homecare@catholichomes.com*



*care with
purpose*

NEATCARE TREE SERVICES

TREE LOPPING & PRUNING

Email: sales@neatcare.com.au
neatcaretreeservices.com.au

 Neatcare Tree Services

0409 782 628

FOR ALL YOUR MECHANICAL
REPAIRS AND SERVICING CALL
YOUR LOCAL MECHANIC BOB
HYNDMAN PH: 0438 441 390



Woodanilling Spreading Service

Spreading service for Woodanilling &
surrounding areas.
Load Cells & GPS, Loader Lime, Super,
Urea. Pick up from CSBP Wagin
available.



Phone : Tim Brown
0418 470 920 or 98231 115
timothy.brown@bigpond.com



Peter Rundle MLA
MEMBER FOR ROE

Narrogin Office
PO Box 378
Narrogin WA 6312

Ph: 08 9881 1225

Esperance Office
107 Dempster St
Esperance WA 6450

Ph: 08 9071 6555

 @PeterRundleMLA  facebook.com PeterRundleRoe
E: Peter.rundle@mp.wa.gov.au | www.peterrundle.com.au



GOLDACRES

Currently taking orders for all Goldacres spray equipment

Agricultural chemical spray equipment
Australia's most innovative agricultural chemical sprayers



Call Shane at Perkins Machinery 0429 947 434



Self Propelled Crop Cruiser Range

High capacity, high clearance and high-performance!

Designed for operators who demand the very best in sprayer performance, efficiency and comfort.



Trailing Sprayers and Booms

Goldacres have a wide variety in their Prairie Range of trailing sprayers!

There will be one to meet your needs



Batchmate - 800i

The Batchmate is portable, easy to use, and proven.

The Batchmate gives the operator the benefit of:

- Lower fuel costs
- Faster fill time
- Improved mix quality
- Greater productivity

perkinsmachinery.com.au 9881 2222



Phone (08) 98 211 471
Fax (08) 98 211 473
A/H Emergencies
0427 017 462

3/114 Clive Street
PO Box 841
KATANNING WA 6317

Find us on Facebook

www.kojonupvethospital.com.au
kvc@kojonupvethospital.com.au



Home Maintenance & Renovations

Call Greg

0424 474 284



All Good Refund Depot

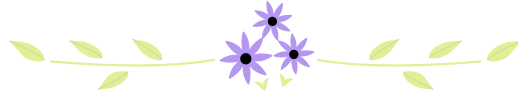
20A Tavistock Street
Wagin WA 6315
9am - 1pm Thurs, Fri & Sat
Phone 08 9861 2500
Drop Off & Pick up Hotline
0439 956 175



All Good Refund Depot

WONGI CONTRIBUTORS

All contributions are to be sent to the new Wongi email or to the volunteers listed below; or may be left at the Woodanilling Store in a box provided or handed into the Shire office. Any queries, comments or complaints are to be directed to the Wongi Volunteer.



Brooke Dellacqua
3316 Robinson Rd
WOODANILLING WA 6316
Phone: 9823 1506

NEW IDEAS ENCOURAGED!!

We would love to see new suggestions and ideas for the Wongi. By chance do you know someone with upcoming births, marriages, milestones, new locals to have their birthdays added or ad put into the Wongi. Any comments in passing, interesting activities happening in Woody? Email- shire@woodanilling.wa.gov.au with your comments, suggestions and updates

NEXT WONGI - 3 July 2023
Deadline for Articles - 28 June 2023

Advertising Rates 2022/2023

The below rates are for an A4 page size and in black & white (per month)

Full page \$66.00
Half page \$33.00
1/4 page \$16.50
Business Card \$8.25

If you would like to advertise your business in the Wongi, please email shire@woodanilling.wa.gov.au

DISCLAIMER

Due to the Trade Practices Act 1974, this publication accepts no responsibility for the accuracy or reliability of the contributors or advertisers. The publisher reserves the right to refuse matter considered unsuitable.

The opinions expressed are not necessarily those of the Shire of Woodanilling or the Wongi volunteers.