

# Woodanilling Wongi

May 2023



## ***IN THIS ISSUE***

Shire Notes, Community Land Care News, Community Activities,  
Notices, Birthdays and Upcoming Events

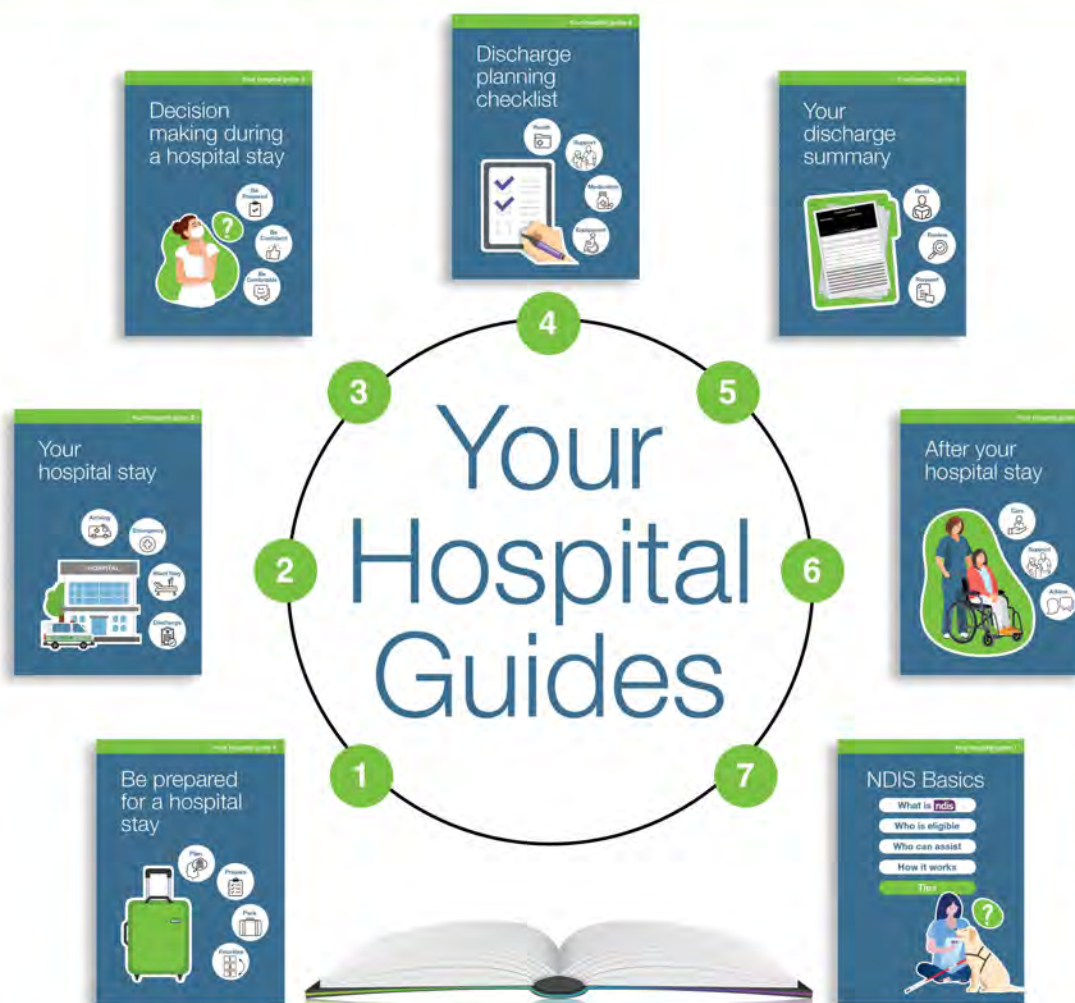
All supplies and materials are kindly donated by the Shire of Woodanilling.





# We've made improvements to the **Patient Assisted Travel Scheme (PATs)**

**Be prepared for a hospital stay, planned and unplanned.**



The booklets are available in accessible, easy read and easy print versions from the National Disability Services website.  
Visit: <https://bit.ly/readytogohomerresources>



**WORDS FROM THE SHIRE PRESIDENT**

With Winter on our doorstep, we remind our residents to check your gutters, surrounds and any equipment that may need to be secured in preparation for winter winds . The Shire has been working on the grader maintenance of roads around the Shire and have recently finished the roadworks on Cornwall/Newstead Roads and Burt Road. The Depot team are currently working on Orchard Road. The current road condition reports are governing the workload to help assist on further funding with the State and Federal programs.

The Shire encourages the community to use SNAP, SEND & SOVLE to let us know of any issues out there. If you are not familiar with this process please call the Shire and the admin staff can assist you with how to use it.

The Council recently approved the Fire Break Notice for the coming season and the Bushfire Operating Procedures. Council reviewed the Fence Line Clearing within Road Reserves and the Shire's website will be updated with these details.

Cr Jefferies and Cr Thomson both attended the ANZAC Day Service which was well patronised by nearly 100 residents and community members. It is with great respect and thanks we acknowledge the work that the Woodanilling CWA Ladies achieved on the day with a wonderful service and beautiful morning tea. It is such a pleasure to be able to relax with the community and embrace the meaning of ANZAC Day for the Woodanilling district.

It is a timely reminder that the financial year is coming to an end and I wish to acknowledge the hard work that the staff and the Elected Members have managed so far. With the Community Plan engagement to be shortly activated this will give the community an opportunity to voice their ideas for the future of our town.

And finally, Happy Mother's Day to all those mums out there.



Cr Stephen Jefferies  
Shire President



## SHIRE NOTES

### ANZAC DAY

There was approximately 100 residents and guests who attended the day.

The Shire of Woodanilling would like to thank all those who attended and supported the ANZAC Day celebration.

The day provided an opportunity for the community to come together and honour those who have served, and those who continue to serve in Australia's Armed Forces. A huge thanks to the ladies at the CWA for organising and setting up such a beautiful day.


Thank you to all those throughout Woodanilling and surrounding areas who came together and embodied the spirit of the ANZAC to deliver this important event.

The Shire acknowledges Shire President Stephen Jefferies, Deputy Shire President Russel Thomson, Joel Anyon, Sheila and Derek Hughes, Sue Waters and again Barb, Pauline and the amazing CWA ladies for their participation in bringing the morning together.



## SHIRE NOTES

### FALLEN TREE? KNOW WHO TO CALL:



Fallen tree or branches that have damaged your home or vehicle, making it unsafe:	Fallen tree or branches over your fence or in your yard:	Fallen tree or branches across a minor street or road:	Fallen tree across a major road or highway:
<b>SES</b> ☎ 132 500	<b>Private Tree Removal Company</b>	<b>Local Government</b>	<b>Main Roads WA</b> ☎ 138 138

For more storm safety information visit: [dfes.wa.gov.au/storm](https://dfes.wa.gov.au/storm)



#### WOODANILLING LIBRARY

Cooler Weather got you down?

Grab a book from the Shire Library, snuggle up with a cuppa and have a good read.

Kids getting bored?

Pop into the Shire Library and check out our latest in kids books and junior fiction.

Don't feel like reading?

At the Shire Library we also have a range of DVDs and audio books for your enjoyment,

Join the Shire Library today, its free!

New titles have just arrived.

#### HEADING INTO WINTER

With winter creeping up on us we encourage members of the Woodanilling community to make sure you remain prepared for the coming months. Do a maintenance check on your vehicles if not completed already - Check your tyres, lights, window wipers and internal workings to ensure safety when on the road.

- Drive with your headlights on so you are visible to other drivers
- Slow down - especially when unsure, its a great idea to slow down and take it easy so you don't become a risk to yourself or others given the wetter setting.

With that we also encourage you to clean your gutters to prevent leaks, floods or overflow on your property. We hope this winter season treats you kindly.





## Flying Doctor Day 2023

The Royal Flying Doctor Service WA's Flying Doctor Day celebrates the 95th anniversary of our service and the committed doctors, nurses, pilots and RFDS support crews who provide emergency aeromedical and essential care all over WA each year.

In 2022, the RFDS retrieved 26 patients per day, flying over 8,500,000 kilometres across WA and beyond.

In the Great Southern region alone, 2022 saw the RFDS:

- Retrieve 842 patients
- Transfer an average of 2 patients per day
- Retrieve 90 children under 15 years of age

This year has been one of the busiest ever, and we need your help to raise the critical funds to keep our service in the sky. Donations made on or before Wednesday 17 May will be doubled by our generous partners.

We're here for you wherever, whenever.

The RFDS WA



### Donate Online

Make a secure online donation to RFDS Western Operations (WA).

### Donate by Phone

Please call (08) 9417 6400 for over-the-phone donations to RFDS Western Operations (WA).

### Regular Giving Program

To learn more about the RFDS Regular Giving Program in Western Operations, or to make a regular monthly gift, please call (08) 9417 6400 or email [fundraise@rfdswa.com.au](mailto:fundraise@rfdswa.com.au)

### Donate by Mail

Download and complete this form and return it to: 3 Eagle Drive Jandakot Airport, Jandakot, WA 6164

**Public Notice**  
**Shire of Woodanilling**  
**Bush Fire Control Officers 23/24**

In accordance with section 38(2E) and 39 of the Bush Fires Act 1954, the following people have been appointed by Council as Bush Fire Control Officers for the Shire of Woodanilling, commencing 1 July 2023. This will be a continuous appointment for the Shire, until revoked by Council in accordance with the Bush Fires Act 1954.

**Bushfire Executives**

Chief Bush Fire Control Officer	Evan Hall
Deputy Chief Bush Fire Control Officer	Gradyn Wilcox
Senior Fire Control Officer 1	Lachlan Patterson
Senior Fire Control Officer 2	Jason Cronin
Fire Weather Officer	Jason Cronin
Deputy Fire Weather Officer	Gradyn Wilcox

**Bush Fire Control Officers**

Beaufort/Kenmare	Bindi Murray
Boyerine/Westwood	Greg Doak
Central	Coleman
Cartmeticup	Wayne Shackley
Glencoe	Braden Crosby

**Harvest Ban Committee**

Chief Bush Fire Control Officer	Evan Hall
Deputy Chief Bush Fire Control Officer	Gradyn Wilcox
Senior Fire Control Officer 1	Lachlan Patterson
Senior Fire Control Officer 2	Jason Cronin
Beaufort/Kenmare	Ray Kowald
Boyerine/Westwood	Greg Doak
Central	Ian Garstone
Cartmeticup	Wayne Shackley
Glencoe	Braden Crosby

**Clover Burning**

Clover Burning Officer	Evan Hall
Clover Burning Officer	Kellie Bartley (Chief Executive Officer)



# WOODANILLING CWA



ANZAC morning threatened cold, wind and rain but it all went well with lots of people enjoying morning tea in the Town Hall after the formal ceremony.

Thanks to the many contributors with cakes and biscuits. A warm cuppa and food was welcomed after standing outside.

With no other catering projects on the horizon, we welcome any suggestions and ideas for activities to promote community well being and camaraderie.

Bookswap, unfortunately has been a dismal failure - tell me why? I know there are readers out there but... Conversely Playgroup at CWA has been a great success and a definite bonus for children and adults alike. It has been heart warming to see the development of this vital network in our community.







# WAGIN/WOODANILLING LANDCARE ZONE

## Feral Pig Control Contractor

Some of you will be aware that Daniel Christensen of PYNC Invasive Animal Control is now operational in the Woody area. Daniel is very professional and uses both trapping and shooting to control numbers. Baiting is not being conducted within this program for a number of reasons but largely to ensure all care is taken not to impact on any non-target species.

Using night vision, long distance scoping, he and his father Cam are able to take out large numbers that otherwise would scatter, as the lack of light results in pigs simply milling about in the area as they do not know in which direction to flee.

We will be covering the cost of PYNC's activities for the next 3 years, by which time we hope the numbers have been reduced significantly and can be managed better by landholders, whether that is doing the control themselves, or continuing to utilise PYNC's services.

Daniel is currently trying to reach out to landholders who have seen pigs or evidence of pigs on their property. If you have not yet heard from Daniel and are keen to get some action taken on your place, contact Gen at the office and she can get PYNC to get in touch with you.





# WAGIN/WOODANILLING LANDCARE ZONE

## Fauna Trapping Season

Now its Autumn we are back in trapping season so will be conducting surveys over April and May.

We are inviting community members to come along and help Gen to set traps at the beginning, check the traps in the morning and record data. Learn the trapping process and possibly get the chance to see some critters!



Trapping at one site over a week, traps are checked early in the morning every day, and then traps are closed off until later in the evening when they are opened again ready to trap overnight.

We invite volunteers to come along for either a day or the whole week. Is usually around 7.30am for an hour or so, weather permitting. We close traps in poor weather for animal welfare concerns.

Contact Gen if you would like to register your interest.

0428 231 506—  
[wwlandcare@westnet.com.au](mailto:wwlandcare@westnet.com.au)







# WAGIN/WOODANILLING LANDCARE ZONE

## Weeds Weeds Weeds

It looks like the break of season is here, and so follow the weeds!

We are likely to see some of the usual suspects getting their groove back like bridal creeper, capeweed, Guildford grass and then a bit later see things like cape tulip start to emerge.

NOW is the time to get your weed plan in place... BEFORE you suddenly notice them on your property.

Do your research on HOW you want to tackle your problem (e.g. mechanical — cultivating, biological—grazing goats, chemical—spray with herbicide) so that you are prepared when you need to do the work. Organise machinery hire in advance, organise to borrow your neighbours goats and fix the fence now ready to keep them in, purchase chemical and appropriate equipment and PPE and store ready to go.

Work out WHEN you want to attack your problem, do your research on when is the most effective time to pull/plough/graze/spray etc that species. We have detailed information on weed management in the office, so come and see Gen if you would like some suggestions and best practice.

If you need HELP to manage your weeds, perhaps ask your neighbours? Reducing your weeds helps them reduce their own, offer them something in return you can provide.

WWLZ is always happy to help out where we can, so if you have a weed you would like tackled, but can't manage it yourself, contact Gen and we may be able to get a group together to help.

We want to highlight 2 weeds of special concern that have had significant management work done across Wagin and/or Woodanilling, but are still present in small numbers. These 2 species are horrifically invasive and we need to maintain the efforts to keep the numbers at bay.

They are **Boneseed—still currently in Woodanilling** and **Narrow Leaf Cottonbush—still currently in Wagin**. Please be vigilant on these 2 species within both Shires and report any sightings to either us at WWLZ or the local Shire office so that we can act on removal before seed set takes place.



# WAGIN / WOODANILLING LANDCARE ZONE

Cottonbush



Boneseed





# WOODANILLING PLAYGROUP

Playgroup meets weekly and alternate between the School, Park, Rec Centre and CWA building. Sessions are advertised on our Facebook page and via WhatsApp.

Playgroup at the school has commenced and we will continue sessions on the school grounds fortnightly. Our first meet back at the school was enjoyable with our families making Easter hats and joining in with the school children for a hat parade and egg hunt. Thank you to Principle Michelle Williams for assisting with establishing regular sessions at the School.

We are also very grateful to CWA for allowing us to use the cottage. Our families really enjoy this space and have made some wonderful artwork and even had a go at some baking! special mention to Pauline for all her help on the days we meet at CWA. We all very much appreciate your help and company.

Upcoming dates (Days are subject to change so if you are new please contact us)

01 May 2023 - Woodanilling Primary School

08 May 2023 - Woodanilling CWA

15 May 2023 - Woodanilling Primary School

22 May 2023 - Woodanilling CWA

29 May 2023 - Woodanilling Primary School

For more information please contact Kahlia 0439 754 391.



## PRINCIPAL'S ADDRESS

We have had an exciting and busy start to the term. Our new Early Childhood Teacher, Mrs Kaylene Head, has started and we are already seeing a continuation of the high expectations we put in place last term. We also welcome a new student, Juliet, in our pre-primary class and she has already settled in and making new friendships.

The School Development Day, at the beginning of the term gave us an opportunity to complete our School Strategic Plan and I will be putting the finishing touches to it over the next few weeks. I was impressed with the professional conversations and discussions we engaged in as we reviewed the Department of Education Strategic Plan and Focus 2023. An exciting change is the new Quality Teaching Strategy that was released last year. With the appointment of Kaylene and her current evidence-based practice we are well placed to implement all strategies, over several years, to improve our practice and student outcomes. It is an exciting time for Woodanilling Primary School.

The principal position was advertised at the end of Term One, closing last week. The application process is underway and Mr Doug Cook, Wheatbelt Director of Education, will complete this process and inform the Council Chair once it is completed.

On Friday 19th May we have two exciting events that we are planning. National Walk Safely to School and P&C Day WA. Students will be invited to meet at the War memorial before school and walk with teachers and parents to school. It should be fun, and we hope the weather is kind to us. Once at school, the P&C will be organising some treats and we can celebrate our appreciation for all their actions. Further information will be out soon.

I would like to thank the following people for the support they offer to the school:

- Chloe Turner for fertilising the lawn when students were on holiday.
- Brooke Moulden for helping to accession and cover our new library books.
- Sonja Hannan for coming in and helping in the library to accession books and organise exchanges.
- Maureen Steere for providing a range of flowers for our ANZAC wreaths.
- Kaye Hancock for ensuring the grounds were looking their best for the ANZAC service.
- P&C for providing funds to purchase our maths books, new chairs for PP and our new Spelling workbooks.
- Tracey Kippin for taking our lawnmower to Perth to get serviced.

Michelle Williamson  
**Principal**



*Our Education Assistant,  
Ms Keisha Fidler with the students using the  
new chairs.*



*Our new Early Childhood Educator,  
Mrs Kaylene Head.*

## Important Dates

### 2023 Term Dates for Students

#### Term 2

**Thursday 11th and Friday 12th May** - Wheatbelt Education Region - Principal's Conference

**Wednesday 17th May** - Musica Viva @ Braeside PS

**Friday 19th May** – National Walk to School Day

P&C Day WA

**Monday 22nd May** - School photos



## FROM THE CLASSROOM

It is such a pleasure to be the new teacher here at Woody. The term has started so well, and I am excited to achieve fabulous things with our students.

I have been teaching for a number of years, with most of my experience at small schools with multi-age classes. I am a Dumbleyung local but have spent many years overseas and interstate before returning home to Dumbleyung to raise my family. My daughter, Juliet, is now attending Woodanilling Primary School and enjoying herself immensely.

A quick summary of our learning areas: Literacy (PP and 1) The children are developing their letter sound knowledge and have begun practising writing simple words. We will build up to writing simple sentences and this will be helped immensely through the Talk 4 Writing program which we will start soon. In Maths, the PP and 1's have been consolidating numbers to 20 and 100 respectively, working out number patterns, writing numbers independently, as well as building on their addition and subtraction skills.

The Year 3 and 4's, in Literacy have commenced paired reading fluency practise which aims to develop tone, intonation and comprehension of the passage being studied. This all works together to increase the children's vocabulary which is an essential component in reading. We are building on our grammar and sentence structure skills through daily practise and explicit instruction of many rules and conventions of the English language. The children have daily writing where they are encouraged to be as creative as possible.

In Maths, the Year 3 and 4's have been building their place value skills and using this knowledge to solve more complicated addition and subtraction sums. We are also having a big focus on learning our 2, 3, 5 and 10 times tables off by heart, but also understanding what it actually means, and we do this through many and varied activities. We are also learning that division is the inverse of multiplication, so are learning our division sums as well.

That's all from me! I am very much looking forward to a brilliant and successful year and I hope you all are as well.

Mrs Kaylene Head







**Dear Parents/caregivers**

**There is a reason that you need to be scared if you are caught between a lion cub or bear cub and its mother. A mother's love is FIERCE. She will fight to her death for her young. A mother's love is also the most gentle, tender, and nurturing relationship too. Self-sacrificing and often exhausting. Yet it is worth it. It is immeasurable. Let's, celebrate and thank our mum's this Mother's Day. Also, enjoy the love that your children give back. Maybe not all we do will be remembered but they will never forget the time, the kisses and cuddles that is given. Enjoy the sloppy kisses, burnt toast, and know that you are greatly loved and appreciated.**

**Take care..... till next time**

**Chappy**



*Chappy has been busy sourcing potatoes from the Potato Board to start our winter garden. The children excitedly joined in and helped with preparation and planting. We can't wait for a new crop and a yummy cooking activity!*





## SCHOOL NEWS

### VOLUNTARY CONTRIBUTIONS

As you would be aware, government schools do not have school fees. What we have instead is a system called Voluntary School Contributions. At Woodanilling PS, this is set at \$45.00 per year for each student.

We use these funds to supplement a range of resources and consumables for students such as: cooking and science ingredients, art and craft materials and teaching aids to support learning across the curriculum.

To pay your contribution, you can either pay online via direct debit to:

**Account Name:** Woodanilling Primary School

**BSB:** 066 040

**Account Number:** 1990 0217

If paying via direct debit, please include the child's family name in the description. If you would like to pay via cash or cheque, please pay at the Admin area.

Thank you for your support.

### CONTAINERS FOR CHANGE

The P&C is now registered for the Containers for Change program. Containers for Change is a recycling program which rewards the collection of eligible containers with a refund of 10c per item. Items can be collected and delivered to a refund point in Katanning or Wagin, at which you can nominate the P&C as your donation recipient using our Scheme ID: **C10326397**



#### Did you know?

Woodanilling Primary School P&C Association is a registered charity with CBH Group?

This means, when farmers are processing their grain on LoadNet, they are now able to nominate the P&C via our Grower Number: 40550436 to receive a grain donation.

If you are unsure or require any assistance, please call the Grower Service Centre on 1800 199 083.

Please spread the word!

## SCHOOL COUNCIL

Woodanilling Primary School Council currently consists of 8 members who represent the Parents, Staff and Community.

All members are available should you have any concerns, questions or ideas about Woodanilling PS.

If you're interested in being part of the council this year, please contact either the school or myself.

Feel free to contact me at any time on [bindimurray@gmail.com](mailto:bindimurray@gmail.com). We are here for you, your children and our community.

Bindi Murray  
**School Council Chair**

## SCHOOL NURSE

### Influenza

Influenza, or the 'flu' is caused by an influenza virus. It is spread through the air when someone coughs, sneezes or talks. It is also spread by touching something that has the virus on it and then touching your nose, eyes or mouth. Common symptoms include sore throat, cough, fever, headache, chills, tiredness and muscle aches.

People with the flu should rest and drink plenty of fluid. Use paracetamol in recommended doses if necessary - but do not give children any medication containing aspirin.

Be sure to keep your child home from school while he or she is sick. If you require school work for your child contact the school to prepare some for you to collect.

The best way to prevent flu from spreading is by washing your hands regularly and after coughing, sneezing or blowing your nose. Flu vaccines are available from your local Immunisation Clinic or GP.

Why should I consider having my child vaccinated against the flu?

The National Health and Medical Research Council, Australia's peak body for health advice, recommends annual vaccination for anyone six months of age or older who wants to reduce their chances of becoming ill with the flu.

Annual flu vaccination is strongly recommended for anyone six months of age or older with a medical condition that places them at higher risk of severe illness from flu. Children and adults with heart, lung or kidney disease or a weakened immune system, are eligible for free flu vaccine through the National Immunisation Program.

Children without underlying medical conditions who become infected with flu can also develop serious illnesses. Flu can cause high fever and pneumonia and make existing medical conditions worse. Flu can also cause convulsions and diarrhoea in children. Influenza viruses are always changing.

Each year scientists try to match the strains of influenza viruses in the vaccine to those most likely to cause flu illnesses that year. It takes up to two weeks for protection to develop after vaccination against flu and protection lasts about a year.

The seasonal flu vaccine is available on prescription or via GP and immunisation clinics and is provided free for certain groups. Flu vaccines are available prior to winter starting. For more information visit –

[healthywa.wa.gov.au/immunisation](https://healthywa.wa.gov.au/immunisation) or contact your GP or Immunisation Clinic.

Sharon Muir  
**School Nurse**

### RAT KITS

We still have hundreds of nasal and lolly-pop RAT kits available to our staff and students. If you require any, please come to the office where Michelle and Claire will be happy to provide you with some. Unfortunately we cannot send the kits home with students, so please pop in and grab as many as you require.



## COMMUNITY NEWS

### 2023 Craig Silvey Award for Young Writers Q&A with Craig Silvey in Subiaco and Albany!

---

The City of Subiaco invites aspiring young writers, teachers, librarians and parents to one of three special Q&A events with Craig Silvey in May.

Ahead of the award's launch in June 2023, Craig will be hosting a week of question-and-answer sessions for young people and their mentors, commencing on Monday 15 May, including a regional trip to Albany.

The 2023 Craig Silvey Award for Young Writers is open to young people from pre-primary to year twelve. It will venture beyond an award's traditional focus on rewarding achievement, and will concentrate on supporting and developing the writing process. Who better to inspire the next generation of writers than our patron, Craig Silvey? Craig wrote and published his first novel as a young writer himself, and understands the struggles and reward involved in taking an idea through to completion.

Come and meet Craig at one of the in-person or online Q&A sessions, armed with all of your weird and wonderful writing questions!

Monday 15 May, 6pm - 7pm  
Subiaco Arts Centre

Wednesday 17 May, 6pm - 7pm  
Albany Public Library

Thursday 18 May, 9am – 10.30am  
ONLINE Q&A - Schools Session  
Email [award@subiaco.wa.gov.au](mailto:award@subiaco.wa.gov.au) to register your classroom and receive the online zoom link. Prepare your class with questions and submit them early to have them added to of Craig's question list!

---

Please contact Subiaco Library on 9237 9300 or [library@subiaco.wa.gov.au](mailto:library@subiaco.wa.gov.au) for further information.



# WOODANILLING COMMUNITY CHURCH

Church Service 10am every Sunday.

Come and give praise to God and feel the holy Spirit uplift your soul and take away your fears.

There is movement happening in this church.

We invite you to come and be part of it.

More info. Contact Marion Taylor 0422337857

## SHORT MAT BOWLS

Term 2 recommenced last week and the usual 'real' bowlers are powering up the leader board. Don't be put off by this as the rest of us plodders enjoy the occasion for the social aspects so come and join us on Monday afternoons at 2.00p.m. If you don't have any bowls, we can help you out. Contact Rod or Pauline for any further information.



## WOODANILLING HOCKEY CLUB

**2023 hockey is just around the corner**

**WRHC executive for 2023 is**

**President:** Lance Mudgway

**Vice president:** Trevor Parminter

**Secretary:** Tegan Wise

**Treasurer:** Sally Vermeulen with Taran Becker to learn the ropes to take over in 2024

### **Coaches**

**Women's:** Sally Vermeulen

**Men's:** Graham Treloar

**Upper school:** TBA

**Middle school:** Penny Shackley

**J11:** Penny Shackley

**J7:** Kurt Wise

The 2023 season began on Saturday 22nd April with our men's team playing in Narrogin.

Home game dates- Saturdays are:

29/4

13/5

10/6

18/6

24/6 (morning only for primary aged children)

29/7

12/8

19/8

Woody is also fortunate enough to be hosting Middle and Upper school games on Thursday 4/5 and 18/5 at 4.30pm

Training days at Woody sports oval

### **Tuesdays:**

Middle & Upper School 4.30pm contact

Penny Shackley 0428 228 065

Women's 6:15pm contact Sally Vermeulen  
0417 096 389

### **Wednesdays:**

J7 (school years 2 and 3) and J11 (school years 4, 5, 6) 4.30pm contact Penny Shackley 0428 228 065

\*Minkey will start on Wednesdays on 3rd May for 9 weeks (yrs PP and yr 1)

### **Thursdays**

Men's 6:30pm contact Graham Treloar  
0430 021 475

## SUPPORT OUR LOCAL WOODANILLING BUSINESS



In 2023 the Woodanilling Tavern is making changes. The kitchen will only open on nights with prior bookings received. Group bookings will not be served unless booked prior to the day of the arrival. This is to keep cost down and to ensure we have staff on to serve you. We appreciate your custom but due to health and staff issues we are forced to do this

Thursday & Friday- 4pm to late

Saturday & Sunday- 12pm to late

9823 1508 or 0427 479 423.

### THE WOODANILLING GENERAL STORE

Monday, Tuesday, Thursday & Friday 7.30am to 3pm

Wednesday 7.30am to 12.00pm

**WHEN YOU ARE SUPPORTING A SMALL BUSINESS YOU ARE SUPPORTING A DREAM**

### JUSTICE OF THE PEACE

Did you know that we have 4 JP's in Woodanilling? Well we have and they are:

Ray Baxter - 9823 1546

Russel Thomson- 0419 950 217

Peter Bartholomeusz- 0447 771 511

Stephen Jefferies- 9823 1508





Happy  
Mother's  
Day!



# AUTUMN RECIPES

## INGREDIENTS

695g tub apricot halves in juice  
4 sprigs fresh rosemary  
2 tbsp French onion soup mix  
1 tbsp extra virgin olive oil  
1kg Chicken Drumsticks  
500g baby potatoes, halved  
1 red onion, cut into thin wedges

### **Step 1**

Preheat oven to 200C/180C fan-forced. Grease a large baking tray with sides. Line tray with baking paper.

### **Step 2**

Drain apricots, reserving 1/3 cup juice. Remove leaves from 1 rosemary sprig. Finely chop. Place soup mix, chopped rosemary, oil and reserved juice in a jug. Stir until well combined. Arrange chicken, apricots, potato and onion, in a single layer, on prepared tray. Drizzle over soup mixture. Season with salt and pepper.

### **Step 3**

Bake, turning chicken and adding remaining rosemary sprigs halfway, for 45 minutes or until chicken is cooked through and potato is tender. Serve.



---

## INGREDIENTS

1.3kg Australian Pork Belly Roast Boneless  
1 tbsp olive oil  
1 tablespoon sea salt flakes  
1 tsp fennel seeds  
1 tsp cumin seeds  
1 brown onion, cut into wedges  
1 fennel, trimmed, cut into wedges  
1 cup (250ml) salt-reduced chicken stock  
200g pkt Kalettes, trimmed  
200g brussels sprouts, halved  
3 tsp brown sugar  
3 small red apples, halved

### **Step 1**

Preheat oven to 140°C. Place pork on a clean work surface. Pat rind dry with paper towel. Brush rind with half the oil. Sprinkle with salt, fennel seeds and cumin seeds. Place the onion and fennel wedges in the base of a roasting pan. Place pork, rind-side up, over the onion mixture. Pour stock around the pork in the pan. Cover and roast for 2 hours or until pork is very tender.

### **Step 2**

Increase oven to 230°C. Uncover and roast for 30 mins or until rind is crackled. Cover and set aside for 15 mins to rest.

### **Step 3**

Meanwhile, combine the kalettes, brussels sprout, 1 teaspoon of the sugar and remaining oil in a roasting pan. Season. Sprinkle cut side of apple with remaining sugar. Add to kalette mixture in the pan. Roast at 230°C with pork, turning occasionally, for 20 mins or until tender.

### **Step 4**

Arrange the pork, onion mixture and kalette mixture on a large serving platter. Thickly slice the pork to serve.







## MAY BIRTHDAYS

5th Lydia Wise	19th Peter Tredinnick
7th Daniel Kippin	20th Stephanie Sampson
8th Jarrad Hill	21st Digby Patterson
9th Jaqueline Stade	23rd Wayne Cooper
10th Hannah Moore	24th Jane Morrell
13th Louise Moulden	27th Lee Bessell-Browne
14th Haylee Eckersley	29th Gilbert Watson
14th Carli Eckersley	29th Karina Watshon
16th Jeanette Moulden	30th Kayde Bessell-Browne
17th Tracey Kippin	

## MONTHLY RAINFALL 2023

JAN	7.2
FEB	0
MAR	12.6
APR	28.8
MAY	
JUN	
JUL	
AUG	
SEP	
OCT	
NOV	
DEC	

## EVENT CALENDAR

23rd May 2023	Ordinary Council Meeting to be held 4pm in Council Chambers

**ACTIVE KIDS ARE  
HEALTHY KIDS**



**FRIDAY 19 MAY 2023**

**Until they're ten, children must always hold  
an adult's hand when crossing the road**

**WALK.COM.AU**

@nationalwalksafetyschoolday @natwalktoschool @natwalktoschool #WSTSD



SUPPORTED BY THE AUSTRALIAN GOVERNMENT AND ALL STATE,  
TERRITORY AND LOCAL GOVERNMENTS



### Nurture Within

Midwifery Care with Deb

**\$15  
per head**

Join Deb from Nurture Within  
& 'B' from Core & Floor Restore for an  
interactive group session

**Topics Include:**

- Birth Recovery (TBC)
- Infant sleep and Settling
- Newborn Behaviour Care and Concerns
- Confidence in Motherhood and Fatherhood

**Both  
Parents  
Welcome**

To book please call The Katanning Hub CRC at 0477 493 141

**15th May 2023**

**10:00am - 12:00pm**

The Katanning Club,  
12 Amherst St, Katanning 6317



# We Want You!

## Opportunity awaits ...

**1 in 5 new jobs** in Australia will be in the disability sector

**Career opportunities** include support workers, leisure buddies, youth workers, mentors, support coordinators, occupational therapists, speech pathologists, physiotherapists, cleaners, gardeners and administrative roles



## About you

Great communication skills

Positive attitude    Work well with others

Happy to share your interests and skills

Punctual and reliable

Problem-solver and flexible

May have cared and supported a friend, family or community member

May have lived experience of disability

**The disability sector is looking for people like you!**

### What to expect

- Every day is different
- More than a salary - personal and professional growth
- Career progression opportunities
- Full-time, part-time and casual employment options

### Find out more

#### • Is this right for me?

Self-Assessment Tool for Potential NDIS Workers



- [thinksupport.org.au](https://thinksupport.org.au)
- [carecareers.com.au](https://carecareers.com.au)
- [ndp.org.au](https://ndp.org.au)

### Get job-ready

- Driver's licence
- First Aid Certificate
- NDIS Quality, Safety & You Certificate - **FREE** (90min to complete)
- Prepare for Worker Screening





# Pathways to Work



## Direct Application

### Find local disability employers:

NDIS Provider List Search



### Find a local job

[seek.com.au](https://seek.com.au)

[ethicaljobs.com.au](https://ethicaljobs.com.au)

[carecareers.com.au](https://carecareers.com.au)

### Some things you might like to ask

- Do you have a volunteer to paid work program?
- What is included in your induction for new workers?
- Do you offer Traineeships?

## Employment Services

### Find your local office:

Workforce Australia



Disability Employment Services



Jobs & Skills Centre (WA only)



### Some things you might like to ask

- I believe I have the right values and skills for the disability sector, but don't know where to start, can you help?
- Can you help me update my resume to focus on the disability sector?
- Are there any local pre-employment programs to prepare for disability work?
- Are there any disability jobs near where I live?
- Are there any part time or casual jobs in the disability sector that suit my other commitments?
- Are there any volunteer opportunities in the disability sector to try and gain experience?
- Is there any local training in disability work?

## Employment Opportunities

### Entry Level Roles

(no mandatory qualifications)

Disability Support Worker

Allied Health Assistant

Disability Employment Consultant

Mental Health Support Worker

Leisure buddy

Mentor/peer worker



### Career Progression

Team Leader

Individual Planner

Case Manager

Support Coordinator

## Training Opportunities

### Vocational Education

Start here or further your career

### Relevant Qualifications

Skillsets

Certificate III in Individual Support

Certificate III in Community Services

Certificate III in Allied Health

Assistance

Certificate III in Health Services

Assistance



### Further Qualifications

Certificate IV in Disability

Certificate IV in Community Services

Certificate IV in Allied Health

Assistance

Certificate IV in Mental Health

### University Education

Start here or further your career

### Allied Health degrees

Occupational Therapy

Physiotherapy

Speech Pathology

Social Work

Psychology

Nursing

### Management & Administration degrees

Finance

Information Technology

Commerce

Marketing

Human Resources



We know your soil because we **dig deeper** into the data

**Soil test with inSITE, our industry leading soil analysis program**

- Independent laboratory.
- Rapid turnaround times.
- Wide range of analytes measured.
- Product recommendations based on results.
- Support from your experienced Area Manager.
- View results on SummitConnect.
- Customer owned data.



**Speak with Chloe  
to learn more**



**Mobile:** 0447 469 245

**Email:** [cturner@summitfertz.com.au](mailto:cturner@summitfertz.com.au)

## We're hiring in Woodanilling

Follow your passion with a career in aged care. Catholic Homes has been providing aged care for over 50 years in Western Australia and are looking for people to join our Home Care team.



We are looking for caring and passionate nursing and support workers for our home care services in the Great Southern.

Our Care with Purpose people-centred care model promotes dignity, respect, privacy and independence.

As a not-for-profit organisation, we are inclusive and welcome all faiths and backgrounds.

We offer competitive hourly rates, casual loading and full training. We have both permanent and casual roles available now.

*If you would like to discuss further call 1300 244 000  
or email your CV to [homecare@catholichomes.com](mailto:homecare@catholichomes.com)*



**care with  
purpose**



# NEATCARE TREE SERVICES

## TREE LOPPING & PRUNING

Email: [sales@neatcare.com.au](mailto:sales@neatcare.com.au)  
[neatcaretreeservices.com.au](http://neatcaretreeservices.com.au)



0409 782 628

FOR ALL YOUR MECHANICAL  
REPAIRS AND SERVICING CALL  
YOUR LOCAL MECHANIC BOB  
HYNDMAN PH: 0438 441 390



### Woodanilling Spreading Service

Spreading service for Woodanilling &  
surrounding areas.  
Load Cells & GPS, Loader Lime, Super,  
Urea. Pick up from CSBP Wagin  
available.



Phone : Tim Brown  
0418 470 920 or 98231 115  
[timothy.brown@bigpond.com](mailto:timothy.brown@bigpond.com)



**Peter Rundle MLA**  
MEMBER FOR ROE

Narrogin Office  
PO Box 378  
Narrogin WA 6312

Ph: 08 9881 1225

Esperance Office  
107 Dempster St  
Esperance WA 6450

Ph: 08 9071 6555

@PeterRundleMLA facebook.com PeterRundleRoe  
E: [Peter.rundle@mp.wa.gov.au](mailto:Peter.rundle@mp.wa.gov.au) | [www.peterrundle.com.au](http://www.peterrundle.com.au)





Currently taking orders for  
all Goldacres spray  
equipment



# GOLDACRES

**Agricultural chemical spray equipment**

Australia's most innovative  
agricultural chemical sprayers



**Call Shane at Perkins Machinery 0429 947 434**



## Self Propelled Crop Cruiser Range

High capacity, high  
clearance and high-  
performance!

Designed for operators who  
demand the very best in  
sprayer performance,  
efficiency and comfort.



## Trailing Sprayers and Booms

Goldacres have a wide  
variety in their Prairie  
Range of trailing sprayers!

There will be one to meet  
your needs



## Batchmate - 8001

The Batchmate is portable,  
easy to use, and proven.

The Batchmate gives the  
operator the benefit of:

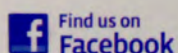
- Lower fuel costs
- Faster fill time
- Improved mix quality
- Greater productivity

**[perkinsmachinery.com.au](http://perkinsmachinery.com.au) 9881 2222**



Phone (08) 98 211 471  
Fax (08) 98 211 473  
A/H Emergencies  
0427 017 462

3/114 Clive Street  
PO Box 841  
KATANNING WA 6317



[www.kojonupvethospital.com.au](http://www.kojonupvethospital.com.au)  
[kvc@kojonupvethospital.com.au](mailto:kvc@kojonupvethospital.com.au)



**Home Maintenance & Renovations**

Call Greg

0424 474 284



## All Good Refund Depot

20A Tavistock Street  
Wagin WA 6315  
9am - 1pm Thurs, Fri & Sat  
Phone 08 9861 2500  
Drop Off & Pick up Hotline  
0439 956 175





## **WONGI CONTRIBUTORS**

All contributions are to be sent to the new Wongi email or to the volunteers listed below; or may be left at the Woodanilling Store in a box provided or handed into the Shire office. Any queries, comments or complaints are to be directed to the Wongi Volunteer.



Ciara Whitmore  
3316 Robinson Rd  
WOODANILLING WA 6316  
Phone: 9823 1506

## **NEW IDEAS ENCOURAGED!!**

We would love to see new suggestions and ideas for the Wongi. By chance do you know someone with upcoming births, marriages, milestones, new locals to have their birthdays added or ad put into the Wongi. Any comments in passing, interesting activities happening in Woody? Email- [shire@woodanilling.wa.gov.au](mailto:shire@woodanilling.wa.gov.au) with your comments, suggestions and updates

**NEXT WONGI - 05 June 2023**  
**Deadline for Articles - 24 May 2023**

## **Advertising Rates 2022/2023**

The below rates are for an A4 page size and in black & white (per month)

Full page \$66.00  
Half page \$33.00  
1/4 page \$16.50  
Business Card \$8.25

If you would like to advertise your business in the Wongi, please email [shire@woodanilling.wa.gov.au](mailto:shire@woodanilling.wa.gov.au)

## **DISCLAIMER**

Due to the Trade Practices Act 1974, this publication accepts no responsibility for the accuracy or reliability of the contributors or advertisers. The publisher reserves the right to refuse matter considered unsuitable.

The opinions expressed are not necessarily those of the Shire of Woodanilling or the Wongi volunteers.

# **IF UNCLAIMED**

Please return to  
PO Box 99  
WOODANILLING WA 6316