



April 2023



Woodanilling ANZAC Day Service

the service will commence at 9.30am, Tuesday, 25 April 2023 at the Woodanilling War Memorial followed by a light morning tea at the Town Hall.



Proudly supported by the Woodanilling CWA and Shire of Woodanilling.



IN THIS ISSUE

Shire Notes, Community Land Care News, Community Activities,
Notices, Birthdays and Upcoming Events

All supplies and materials are kindly donated by the Shire of Woodanilling.

WORDS FROM THE SHIRE PRESIDENT

It is with pleasure to say that it has been great to welcome new residents/ratepayers to our town and district. There has been an increase of new comers to “Woody” and the Shire would like to welcome you to our beautiful part of WA. With new people, comes new ideas and views and it has been fantastic to hear these on their arrival in town. It is great to advocate to them about how beautiful our community is and how friendly we are, which has encouraged them to build in town.

I would like to personally thank those who were in attendance for the Shire’s Annual Electors Meeting. It was great to be able to celebrate this last year with our residents and also to hear their concerns, questions and good discussions held. If you would like to see some of these questions, please refer to <https://www.woodanilling.wa.gov.au/documents/20993/unconfirmed-minutes-aem-21-march-2023>

It's great to see the Depot Works Crew who have been busy with road construction along with making our town look vibrant. The Shire is working on maintaining and enhancing our community and we will continue to do so.



The Shire now has a new process to report around town and the district. Please upload the Snap Send Solve app to your phone. You are able to link the concern, maintenance request etc which will be directly sent to the Shire. This will help us move quicker on requests and delivery at the point you see it. We welcome this new change to help keep our community safe.

I wish you all the best for the Easter Break and looking forward to the ANZAC Day service to commence at 9.30am at the Shire of Woodanilling War Memorial followed by a light morning tea provided by the CWA.



Cr Stephen Jefferies
Shire President

WORDS FROM THE CEO

Welcome to the month of April. How time flies in this busy world of ours. Council held 3 meetings on the 21 March 2023 along with the Bush Fires Advisory Committee held 28 March.

The Audit Committee was held with the completion of the Annual Compliance Audit Return and the adoption of the Business Continuity Plan. The Council also recommended two planning applications for an outbuilding and additional dwelling to be approved with conditions.

The Shire by law is required to review its financials during the year and the Council endorsed the Budget review with some minor changes having a nil effect on the overall budget. The monthly financials and creditors listings are approved each month by Council. You are more than welcome to review these on our Shire's website.

The 2023 Council Elections will be conducted under the new Local Government Act reform that is currently in final stages and to be released soon. The Shire voted to take the function of this under the WA Electoral Commission. The Preferential voting system will be now used along with the requirement to be using CountWA programming by WAEC. The Shire is looking forward to the outcomes of this, which is set for October 2023.

Watch this space for when enrolments are open.

Council further supported some policy updates to align with the current practices in local government.

The Annual Electors Meeting was well attend. Please refer to the Shire President's notes for further comment.

It is with great pleasure that Mr Evan Hall has been appointed the new Chief Bush Fire Control Officer in the coming seasons and we would like to give a big thanks to Jason Cronin for his hard work over the last 2 years as the Chief. Volunteers are always welcome and should you wish to join the brigades in the district, please contact the Shire for further information. Information of the positions will be released out as these are to be taken into effective 1st July 2023.

WORDS FROM THE CEO

An opportunity for the Community to submit Community Requests as part of the 2023/2024 Draft Budget has been released. You are able to find the information on the Shire's website. Please refer to the Shire website <https://www.woodanilling.wa.gov.au/community-budget-requests-draft-budget-considerations-for-the-20232024-year.aspx>.

This is a great time for you to submit any requests to be considered as part of the process. This will now become an annual request and to help Council recognise what others may see in our community.

The Shire has recently completed works along Newstead, Cornwall and Onslow Roads through grant funding. The Shire has further works to be completed by 30th June for the Roads to Recovery Program and Regional Roads Group funding.

The Shire has had Main Roads visits with discussions on the long term of the main artery roads being Robinson and Katanning/Dumbleyung (Oxley Road) Roads. The depth and knowledge of the elected members involved along with Mr Mike Hudson has made it great for discussions having that around the table to lobby for Woodanilling and the long term availability of funding. We are looking forward to being successful in future roads grants.

The Shire has submitted a variation to not proceed with the basketball court aspect however is now seeking this variation approval to change this to upgrading some of the play equipment within Centenary Park.

I wish you all the best over the Easter Break and would love to see as many people on ANZAC Day to support our community in this celebration. The CWA will be hosting and should you wish to support by bring a plate of goodies, it would be mostly appreciated.



Kellie Bartley
Chief Executive Officer

SHIRE NOTES

RESTRICTED BURNING PERIODS

Any Fires lit are your responsibility - 28th February to 15th April - Permits are required for all fires lit during the restricted burning times and must be obtained from your local Fire Control Officer who will explain the conditions under which fires may be lit.

All firebreaks and fire hazard reduction measures had to be completed for all areas within the Shire of Woodanilling by 15th November and must now be maintained at that standard until 15th April.

CBFCO – Jason Cronin	0467 160 779
DCBFCO – Evan Hall	0428 123 374
SFCO – Ian Garstone	0407 231 511
SCFO2 – Grady Wilcox	0428 231 550
Beaufort/Kenmare – Bindi Murray	0409 347 299
Boyerine/Westwood – Greg Doak	0427 612 038
Cartmeticup – Wayne Shackley	0427 228 070
Central – Ian Garstone	0407 231 511
Glencoe – Braden Crosby	0437 817 047

2023 COUNCIL MEETING DATES

Woodanilling Shire wishes to advise the following dates for the 2023 Ordinary Meetings of Council starting at 4pm to be held at the Council Chambers 3316 Robinson Road Woodanilling. Two meetings will be held within the district. These dates are to be confirmed.

January 2023 – No meeting to be held.

21 February 2023

21 March 2023

18 April 2023

23 May 2023

20 June 2023

18 July 2023

22 August 2023

19 September 2023

24 October 2023

21 November 2023

19 December 2023

SHIRE NOTES

FACILITY HIRE

The Shire of Woodanilling has the Town Hall and Recreation Centre for hire. If you are interested, click on the link and complete the online booking form.
<https://www.woodanilling.wa.gov.au/community/community-facilities.aspx>
Or alternatively contact the Shire on 9823 1506 for a facility hire form.

EASTER CLOSURES - SHIRE

Good Friday - 7th April 2023
Easter Monday - 10th April 2023
Depot closed 7th April - 11th April open 12th
Shire closed 7th April - 11th April open 12th
Woodanilling Tip closed Sunday 9th April
Open Saturday 8th April
EMERGENCY CONTACTS
EMI- 0438 929 706
CEO- 0428 032 089
Ranger enquiries-0424 704 812

COMMUNITY WATCH

Ideally, we would like Woodanilling to be a welcoming, safe and secure place for everyone. Especially leading into the Holidays. As a community we can improve our personal safety and household security by reporting suspicious behaviour and sharing information that helps build awareness. We strongly encourage reporting of crime or suspicious activity in your area to Police or Crime Stoppers.

Crime Stoppers-1800 333 000

You can report information about criminal activity to the Crime Stoppers hotline or visit www.wa.crimestoppers.com.au to report online.

WOODANILLING WASTE FACILITY

OPENING HOURS

Thursdays - 9.00am - 1.00pm
Saturdays - 12noon - 5.00pm
Sundays - 2.00pm - 5.00pm
Closed Christmas day and Easter Sunday.

CONTACTS OUTSIDE THE SHIRE

Ambulance, Fire, Police 000
Crime Stoppers 1800 333 000
Water Corporation Faults 131 375
Western Power Faults 131 351
Main Roads 138 138
Rubbish Recycle Collection
9885 9112

EMERGENCY CONTACTS

EMI- 0438 929 706
CEO- 0428 032 089
Ranger enquiries-0424 704 812

WOODANILLING SHIRE OFFICE OPENING HOURS

Monday - Friday 9.00am - 4.30pm
All Receipting transactions close 4.00pm

RIDE FOR YOUTH

About the Ride: The Hawaiian Ride for Youth is held annually in March, across 4.5 days, with riders covering over 700kms on their way from Albany to Perth. The purpose of the Ride for Youth is to raise funds to support youth mental health services. The vision is to remove the stigma associated with mental health.

From its beginnings in 2003 the event has raised more than \$30 million to support Youth Focus in assisting young Western Australians experiencing mental health challenges.

The awareness raised for Youth Focus as a result of the Hawaiian Ride for Youth is equally as important as the funds raised.

The cheerful group enjoyed a leisurely ride through Woodanilling on Thursday 23rd March.



CHECK YOUR SMOKE ALARMS

During April, the Western Australian community are urged to test and clean their smoke alarms, check their smoke alarms are less than 10 years old and replace batteries if needed.

Maintaining smoke alarms ensures they are in working order when needed most.





WAGIN / WOODANILLING LANDCARE ZONE

Bumper result at this years Wagin-Woody Fox Shoot!

We held our fox shoot this year to fit in with the Red Card for Red Fox fundraising program which raises money for Regional Mens Health Initiative. The organisation designates dates that you can pick from to be included, and this year we went with the weekend of 17th—19th of March.

We combined the two Shires this year and held our tally and breakfast at Beckers property in Woodanilling.

We had a great turn out for the breakky which saw 6 teams from Wagin and 4 teams from Woodanilling participating this year. We had prizes for placing teams and a few individual prizes as well, thanks to our fantastic range of sponsors. **Elders Wagin, Wagin Agri Services, Woodanilling Tavern, Wagin Action Group, PYNC Invasive Animal Control, Tally Tags, Woodanilling General Store, Galts Hardware Wagin, Foodworks Wagin and Steelo's Guns & Outdoors.** Thank you to this group of sponsors for helping us deliver a great community event!

We ended up with a huge tally count, with **326 foxes, 7 cats, 73 rabbits and 6 pigs!** With \$5 donated by Sports Shooters Association of Australia for every fox and cat culled, we have raised \$1665 to go towards Regional Men's Health. Well done to all involved for participating for a good cause!

Winners this year was Wagin's PTO Hoes shooting over at Jaloran. They got a whopping 60 foxes! Along with 13 rabbits, 1 cat and 3 pigs that took them over the line. 2nd place was the Dawson team from Wagin, with 32 foxes and the 38 rabbits and 1 cat got them over into 2nd place. 3rd place was a draw for the Wagin Hunt, Catch, Cook team and Woodanillings Frank's.

We had individual prizes for largest fox and largest cat, and our wooden spoon prize was taken out by Weise's, due to their year round fox control activities having the desired impact!! They wanted to contribute to the fundraising regardless so thanks boys!

Wagin took out the largest number of foxes overall with 197, and despite having 2 fewer teams, Woodanilling took out 124 foxes, so with extra teams next year Woody might take it over the line! Well done to all the teams participating this year, it was a great result and keep it going this year!





WAGIN/WOODANILLING LANDCARE ZONE

Feed 365 Field Day in Katanning



FEED365 and FutureSheep field day

A great big look at all the feedgap options
under the autumn sun

**Wednesday
5 April 2023**

9.00am for
10.00am start – 4.00pm

Katanning Leisure Centre

(with buses to and from DPIRD's
Katanning Research Station)

Light lunch and
refreshments provided

- ✓ Find out the latest on FEED365 and FutureSheep projects - the impact on production if we take up the opportunities presented.
- ✓ Meet major seed companies, seed retailers and nurseries.
- ✓ Take a guided tour of the trials at the Katanning Research Station.

Brought to you by the Department of Primary Industries and Regional Development and Meat & Livestock Australia's SheepLinks Program.

More information

For more details on the program or to register, scan the QR code. RSVP by Monday 3 April to confirm catering and transport.

To get a sneak peek at the site layout and the varieties and mixes under trial, visit agric.wa.gov.au/FEED365

For general enquiries, please contact
Esther Price at esther@bluesee.com.au



Register
today

PHOTO: DAVID TAYLOR

dpiird.wa.gov.au

Don't forget there is an upcoming field day on April 5th with some more feed gap solutions being showcased and some great discussion with those in the know!

Check the program here below, if you can't make the full day, there may be items of interest you can attend in the morning speaker sessions held at the Leisure Centre in Katanning—there will be buses to the research centre to view the pastures in the afternoon.

Contact Gen at the office if you would like to know more.

FEED365 and FutureSheep Field Day

A great big look at all the feedgap options under the WA autumn sun

Event program

Wednesday, 5 April 2023

9.00am	Arrival morning tea and seed company displays.
10.00am	Welcome and introductions with event MC - Dr Bronwyn Clarke , Chair, WA Livestock Research Council.
10.10am	Why you should be excited by today's opportunity: FEED365 Project leader Dr Daniel Real explains what's new, what's different and what's impressing him most in the project's early stages.
10.20am	The MLA connection: MLA is a partner in the FEED365 and FutureSheep projects, with funding contributed through the SheepLinks program. MLA's Mitch Plumble explains the outcomes they expect to see from this work.
10.30am	Why FEED365 is more important than you may have thought: The climate is changing and so too must our approach to pasture. Here's the global climate model's projections for temperature and rainfall in the Great Southern by 2050 - DPIRD's Dr Meredith Guthrie from the FutureSheep project.
10.40am	Back to the future: So given those projected temperatures and rainfall patterns – what does that mean for farm production in 2050? DPIRD's Paul Sanford gives us his likely scenarios.
10.50am	FEED365 simplified: With 48 grazing plots and 16 different treatments, Project Leader Dr Daniel Real explains what to look for in the coming trial site visit.

11.05am	Soil characteristics of the two field sites: A feature of the project is the ability to compare performance on two very different soil types. DPIRD's Dr Shahab Pathan gives us a quick run-down on the soil types featured.
11.10am	An early look at the data: While the project is still in its early stages, there's a story emerging on pasture and DPIRD's Maddie Mellowage explains.
11.25am	How an investment in autumn feed alternatives can impact animal production: The true value only emerges if it plays out in the sheep. DPIRD's Claire Payne shares what's been discovered so far.
11.40am	Angelo's Golden Rules: There is no silver bullet to this feedgap challenge and DPIRD's Dr Angelo Loi is known for his 'golden rules' of optimising the process. This is a timely reminder of what they are.
11.45am	So what else are we going to see? FEED365 has a team of researchers involved and we've asked Dr Clinton Revell , Paul Sanford and Justin Hardy to tell us what they think has the greatest appeal and relevance to the region.
12.00 noon	Lunch break
12.30pm	Meet the seed teams: Dr Bronwyn Clarke runs a series of rapid-fire interviews with the seed and nursery company reps – so we hear what's commercially available and brings greater relevance to the field trip.
1.00pm	Buses depart to Site # 1
1.15pm	Arrive Site #1
2.20pm	Board buses
2.40pm	Arrive Site #2 – afternoon tea break and the launch of the new Teder Agronomy fact sheet and manual.
3.30pm	Return to Katanning Leisure Centre.
3.45pm	Arrive Katanning



WAGIN / WOODANILLING LANDCARE ZONE

Fauna Trapping Season

Now its Autumn we are back in trapping season so will be conducting surveys over April and May.

We are inviting community members to come along and help

Gen to set traps at the beginning, check the traps in the morning and record data. Learn the trapping process and possibly get the chance to see some critters!



Trapping at one site over a week, traps are checked early in the morning every day, and then traps are closed off until later in the evening when they are opened again ready to trap overnight.

We invite volunteers to come along for either a day or the whole week. Is usually around 7.30am for an hour or so, weather permitting. We close traps in poor weather for animal welfare concerns.

Contact Gen if you would like to register your interest.

0428 231 506—

wwlandcare@westnet.com.au



WOODANILLING MEN'S SHED
Corner Robinson and Burt Road
Woodanilling 6316



Well we have been back for a while and things are progressing along nicely.

We have a new member a recent arrival from Albany. Welcome to Harry Coutts and we hope his time at the Shed is long and prosperous. Harry is a recently retired Undertaker so we hope his expertise is not needed by any of our members.

The boys out the back have recently completed the construction of a small camper trailer to be towed by one of our members motorcycles and has been off camping already.

One member of the community has been a regular visitor to the Shed and we are progressively restoring her lounge and kitchen chairs to good health.

Another larger project is the restoration of our presidents kitchen dresser. Unfortunately the white ants have eaten more of the cupboard than they left so restoration is a patchy affair.

We at the Shed do not claim to be experts in anything but we will have a go if we think we can manage the job. Woodwork or metalwork we will give it a go. If we don't think we can do it we will tell you outright.

Depending on when this comes out "Have a happy and safe Easter" and remember "it is better to be late getting there than not arriving at all". Drive Safely.

We are always on the lookout for new members. Yearly membership is only \$40.00 It is used mostly to cover our insurance premiums to ensure we are all covered for any unforeseen circumstances..

We are open and welcome new members Tuesday and Wednesday mornings from about 8.30am till noon, although finish time is flexible according to the weather and how we are feeling.

You can contact us at the Shed or by phone;

President: Brian Paddon 04073387010

Vice President: Steve Fitzpatrick 0410393296

Secretary: Rod Marshall 0437014941 (leave a message)

PRINCIPAL'S ADDRESS

We have continued to have a busy time at Woodanilling PS. Our attendance rate has been 86.5% for the term and it is pleasing to see it return above 80%. The Department of Education has a strong focus on attendance and having all students at school every day. The Wheatbelt Education Region also has a strong focus on attendance and recently updated the policy after a review from network principals.

The Year Three students completed NAPLAN and I was impressed with the way they looked forward to each assessment and how they completed each one with confidence. Results should be out next term and inform our teaching and learning.

Claire Marsden has settled into the position of Manager of Corporate Services, and she has been successful in learning the role, although it takes a great deal of time to understand all the processes. Claire is to be commended for her approach in her first two weeks. Thanks also to Tracey for coming into mentor and support Claire during the first few weeks.

Bindi, School Council Chair, is busy organising the Council meeting for this term and will inform all members about the final date. It is wonderful that members come to meeting and take an interest in the governance of the school. When we work with parents and the community our school will always do well. The Annual report, started by phoebe Anderson in 2022 will be presented for endorsement before being released to the public. I have been working to complete the draft and it is a wonderful showcase of our school.

The School Strategic Plan expired in 2022 and some preparation for the new plan 2023 – 2025 was undertaken with staff in 2022 and again at the

beginning of this year. I will be presenting the draft of the new plan at the Council meeting and look forward to hearing any feedback from members and endorsement.

A group of four Olympians visited the school on Friday 10th March. Josie Tomic, cyclist, and Sophie White, hurdler, shared their story and the children enjoyed hearing about their journey to the Olympics and their commitment to training and realising their dream of winning medals. They left us two boxing kangaroos and signed cards of their achievement and profile. Information about both athletes can be found on the internet.



Harmony Day

Tuesday March 21st was harmony Day and we dressed in orange to reminds us to be tolerant of others who may be from different countries. Recognising similarities and differences is important as we value everyone's uniqueness.

Michelle Williamson

Principal



Harmony Day activities



Woody in Space



Health Self Portraits

SCHOOL NEWS

VOLUNTARY CONTRIBUTIONS

As you would be aware, government schools do not have school fees. What we have instead is a system called Voluntary School Contributions. At Woodanilling PS, this is set at \$45.00 per year for each student.

We use these funds to supplement a range of resources and consumables for students such as: cooking and science ingredients, art and craft materials and teaching aids to support learning across the curriculum.

To pay your contribution, you can either pay online via direct debit to:

Account Name: Woodanilling Primary School

BSB: 066 040

Account Number: 1990 0217

If paying via direct debit, please include the child's family name in the description. If you would like to pay via cash or cheque, please pay at the Admin area.

Thank you for your support.

CONTAINERS FOR CHANGE

The P&C is now registered for the Containers for Change program. Containers for Change is a recycling program which rewards the collection of eligible containers with a refund of 10c per item. Items can be collected and delivered to a refund point in Katanning or Wagin, at which you can nominate the P&C as your donation recipient using our Scheme ID: **C10326397**



Did you know?

Woodanilling Primary School P&C Association is a registered charity with CBH Group?

This means, when farmers are processing their grain on LoadNet, they are now able to nominate the P&C via our Grower Number: 40550436 to receive a grain donation.

If you are unsure or require any assistance, please call the Grower Service Centre on 1800 199 083.

Please spread the word!

SCHOOL COUNCIL

Woodanilling Primary School Council currently consists of 8 members who represent the Parents, Staff and Community.

All members are available should you have any concerns, questions or ideas about Woodanilling PS.

If you're interested in being part of the council this year, please contact either the school or myself.

Feel free to contact me at any time on bindimurray@gmail.com. We are here for you, your children and our community.

Bindi Murray
School Council Chair

FROM THE CLASSROOM

Dear Parents,

I am excited to be teaching the students on Wednesday to Friday from week 7-10. Mrs McDougall teaches Monday and Tuesday.

For Literacy, the Yr 3 & 4's have had a focus on daily writing on a given topic or free writing. Spelling words are taken from this work, with the aim of the children improving their spelling of everyday words. We are also focusing on paragraph structure, and that a paragraph deals with one topic only, and has an introductory or topic sentence, developing sentences, and a 'wrap-up'/concluding sentence. We are examining and re-writing paragraphs from books to identify this structure. Students have been developing their knowledge of the structure of persuasive writing and putting up a strong argument 'for' or 'against'.

The younger children (PP/Yr 1) have been doing great with reading, sounding out, and writing words. They have been working with a program called InitialLit, where they read a story, work on particular literacy concepts, and do a related craft activity. Extension is built into the lesson.

For Numeracy, the Yr 3 & 4s have been reading and writing numbers in the thousands, ten thousands, hundred thousands, and millions. The children have been contemplating the concept of infinity regarding numbers. We have also had a strong focus on the multiplication tables, beginning with 2, 5, & 10's. This has involved reciting the tables, verbal quizzing, games, and timed written drills. The children have

been keen to beat their own time record. To support this focus at home, it would be great if you can ask your children to tell you these tables, and perhaps put a times tables chart on the wall. You may have one already, or these are available to buy cheaply (around \$5) at Regional Retailers in Katanning. You can also play some low pressure, fun family games with your children with cards or two dice. Simply choose the table that you want to focus on (2's, 5's, or 10's at present), and each player must multiply the card number or number shown on the two dice by the table you've chosen. If they get it correct, they get a point if playing with dice, or the card. The one with the most points/cards is the winner. I hope they enjoy showing you their skills!

The younger children (PP/Yr1) have been working on familiarisation with numbers to 20 (reading/recognising, counting, and writing), and also counting by 2's and 5's. Their work each day is also consolidated by using manipulatives, and with a variety of games, eg. 'Snap' or 'Go Fish'. I'm very impressed with their number skills!

On Monday and Tuesday, students have been working on Measurement with Yr 3 & 4s investigating metres and kilometres. Younger students have been working on time by learning about days of the week and months of the year.

In Art, we have been working on a leaf bowl, following reading the book 'The Giving Tree' by Shel Silverstein.

In Health students have been looking at similarities and differences that can be identified in faces and then creating a portrait of their own, and then a peer.

In Science students have continued to investigate the growing cycle and seeds. Yr 3 & 4s have set up an experiment to see how changes impact to light, water and temperature affect growth.

In Digital Technologies, the older students have been working on writing formal/professional emails, while the younger students are learning to independently log in to access regularly used Maths work.

Kind regards,

Mrs Wendy McDougall and Mrs Anita Earnshaw

SCHOOL NURSE

How to build resilience in children

Resilience: what is it?

Resilience is the ability to 'bounce back' after challenges and tough times.

For children, challenges and tough times include experiences like starting at a new school or kindergarten, moving house, or welcoming a sibling into the family. They can also include serious experiences like being bullied, family breakdown, family illness or death.

Children build resilience over time through experience. You can help your child learn skills and develop resilience by having a warm, supportive relationship with them.

Resilience: why it's good for children

Children who are resilient can recover from setbacks and get back to living their lives more quickly. And when children overcome setbacks and problems, it builds their confidence and helps them feel more capable the next time a problem comes up.

Resilient children are often good at solving problems and learning new skills. This is because they're more willing to try again even if things don't go the way they want the first time.

And when things don't go well and children feel anxious, sad, disappointed, afraid or frustrated, resilience helps them understand that these uncomfortable emotions usually don't last forever. They can experience these emotions and know they'll be OK before too long.

For more information about resilience in children go to <https://raisingchildren.net.au>

Sharon Muir

School Nurse

RAT KITS

We still have hundreds of nasal and lolli-pop RAT kits available to our staff and students. If you require any, please come to the office where Michelle and Claire will be happy to provide you with some. Unfortunately we cannot send the kits home with students, so please pop in and grab as many as you require.



Youngstars April Holiday Program

Katanning Leisure Centre's
School Holiday program
is for kids aged
5 -12

Monday 10	Tuesday 11	Wednesday 12	Thursday 13	Friday 14
Public Holiday NO PROGRAM	 Easter Craft A morning filled with a range of fun & creative Easter activities. 9:00am-10:30am \$10.00 	AFL Clinic WAFC & Shire Of Katanning are hosting a pre-season AFL clinic. Come along and have a kick around. 9:00am-11:00am \$2.00  	Easter Treats Come along to create and decorate delicious edible Easter treats. 9:00am-10:30am \$10.00  	Rollerblading Send off the first week of school holidays with a fun filled morning of rollerblading. 9:00am-10:30am \$7.00 
Monday 17	Tuesday 18	Wednesday 19	Thursday 20	Friday 21
Rollerblading Kick off the last week of school holidays with a fun filled morning of rollerblading. 9:00am-10:30am \$7.00 	 Appletastic Cooking Get creative with apples in apple themed cooking activity. 9:00am-10:30am \$10.00  	Outdoor Games Enjoy your morning with fun filled outdoor sports and games. 9:00am-10:30am \$5.00  	Mother's Day Craft Create something for the special lady in your life just in time for Mother's Day. 9:00am-10:30am \$7.00  	 Roller Disco Send off the last day of holiday in style at our super hero themed roller disco. All ages welcome 5:30pm-7:30pm \$7.00  



Bookings are essential! To book call 9821 4399

Forms available at the Katanning Leisure Centre or by emailing Stephanie.green@katanning.wa.gov.au

8:30AM - 4:30PM
WITH NEW ACTIVITIES
DAILY!!!

FULL DAY
OF ACTIVITIES
\$49

KIDS

TERM 1

SCHOOL

HOLIDAY

PROGRAM





Football, games and other sports

VERY LIMITED SPACES,
BOOK TODAY TO AVOID
DISAPPOINTMENT...

APRIL 11-22, 2023

ALBANY AND DENMARK LOCATIONS
FOR MORE INFORMATION VISIT OR CALL:

WWW.EFA-ALBANY.COM.AU / 0422 190 459



EUROPEAN FOOTBALL ACADEMY
GREAT SOUTHERN STARS
SIC PARVIS MAGNA



EUROPEAN FOOTBALL ACADEMY
GREAT SOUTHERN STARS
SIC PARVIS MAGNA

CWA NEWS



As a result of our AGM in February, the same office bearers were reelected - President - Barb Ashby, Secretary/Treasurer - Pauline Edgcumbe. Only 6 of us were present but we're hoping for some younger members to boost our ranks with fresh ideas and support. Our first activity for the year was helping out in the CWA pavilion at the Wagin Woolorama. Our next community event will be ANZAC Day which is usually well received. Our mission this year is to be more focussed on bringing women together via various means to help create a more vibrant community. Would you like to sing, join a drama group, knit blankets for charity?

Please contact either Barb or Pauline if you want to join or be linked into CWA but can't attend meetings. Barb Ashby - 0417180361, Pauline - 0439922311.

We've had 2 wonderful sessions at the CWA cottage with Mums and kids both benefitting from the social interaction. After a stroll in the garden we all proceeded to collage with our found materials. The results are proudly displayed on the board. Story time, morning tea and play on the mat and we're all ready for an afternoon nap! Stay tuned for the next event!!

WOODANILLING COMMUNITY CHURCH

Church Service 10am every Sunday.

Come and give praise to God and feel the holy Spirit uplift your soul and take away your fears.

There is movement happening in this church.

We invite you to come and be part of it.

More info. Contact Marion Taylor 0422337857

SHORT MAT BOWLS

The current state of play has seen our numbers stabilise and grow with a young man joining us from Katanning. So - come on all youngsters out there, join in the fun on a Monday Night - 6.30 p.m. At this point in the rankings, Laurie is in the lead - no doubt helped by his participation in bowls competitions in Katanning - but there are a few of us on his tail for line honours! \$3.00 for the night earns you a game and a cuppa.



WOODANILLING HOCKEY CLUB

2023 hockey is just around the corner

WRHC executive for 2023 is

President: Lance Mudgway

Vice president: Trevor Parminter

Secretary: Tegan Wise

Treasurer: Sally Vermeulen with Taran

Becker to learn the ropes to take over in 2024

Coaches

Women's: Sally Vermeulen

Men's: Graham Treloar

Upper school: TBA

Middle school: Penny Shackley

J11: Penny Shackley

J7: Kurt Wise

Keep an eye out for further information on training commencement dates via our Facebook page and the next Wongi.

SUPPORT OUR LOCAL WOODANILLING BUSINESS



In 2023 the Woodanilling Tavern is making changes. The kitchen will only open on nights with prior bookings received. Group bookings will not be served unless booked prior to the day of the arrival. This is to keep cost down and to ensure we have staff on to serve you. We appreciate your custom but due to health and staff issues we are forced to do this

Thursday & Friday- 4pm to late

Saturday & Sunday- 12pm to late

9823 1508 or 0427 479 423.

THE WOODANILLING GENERAL STORE

Monday, Tuesday, Thursday & Friday 7.30am to 3pm

Wednesday 7.30am to 12.00pm

WHEN YOU ARE SUPPORTING A SMALL BUSINESS YOU ARE SUPPORTING A DREAM

JUSTICE OF THE PEACE

Did you know that we have 4 JP's in Woodanilling? Well we have and they are:

Ray Baxter - 9823 1546

Russel Thomson- 0419 950 217

Peter Bartholomeusz- 0447 771 511

Stephen Jefferies- 9823 1508

WOODANILLING TOWN HISTORY

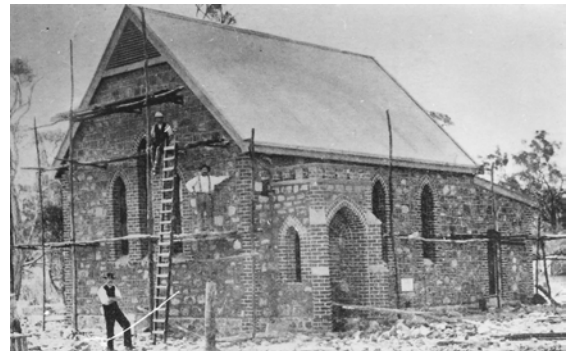
WOODANILLING TAVERN/HOTEL

By June 1908, the original hotel was thought to be unsuitable and a license was applied for new premises to be built alongside to existing building. The building became a boarding house after the construction of the new hotel. Mrs Nelson was probably the first proprietor. Mrs Grover (who previously had a boarding house on Robinson Road) took over from Mrs Nelson at the 'old pub', most of her guests being railway workers. 15 November 1924 - The 'new' hotel was constructed on the south side of the 'old' hotel. In late July 1908 the new hotel was started by the builders, Chapman and Firth, with the cost being 1500 pounds with a further 500 pounds allowed for extras, The bricks for the new hotel were being made at 'Bellevue' with the old kiln still visible today.



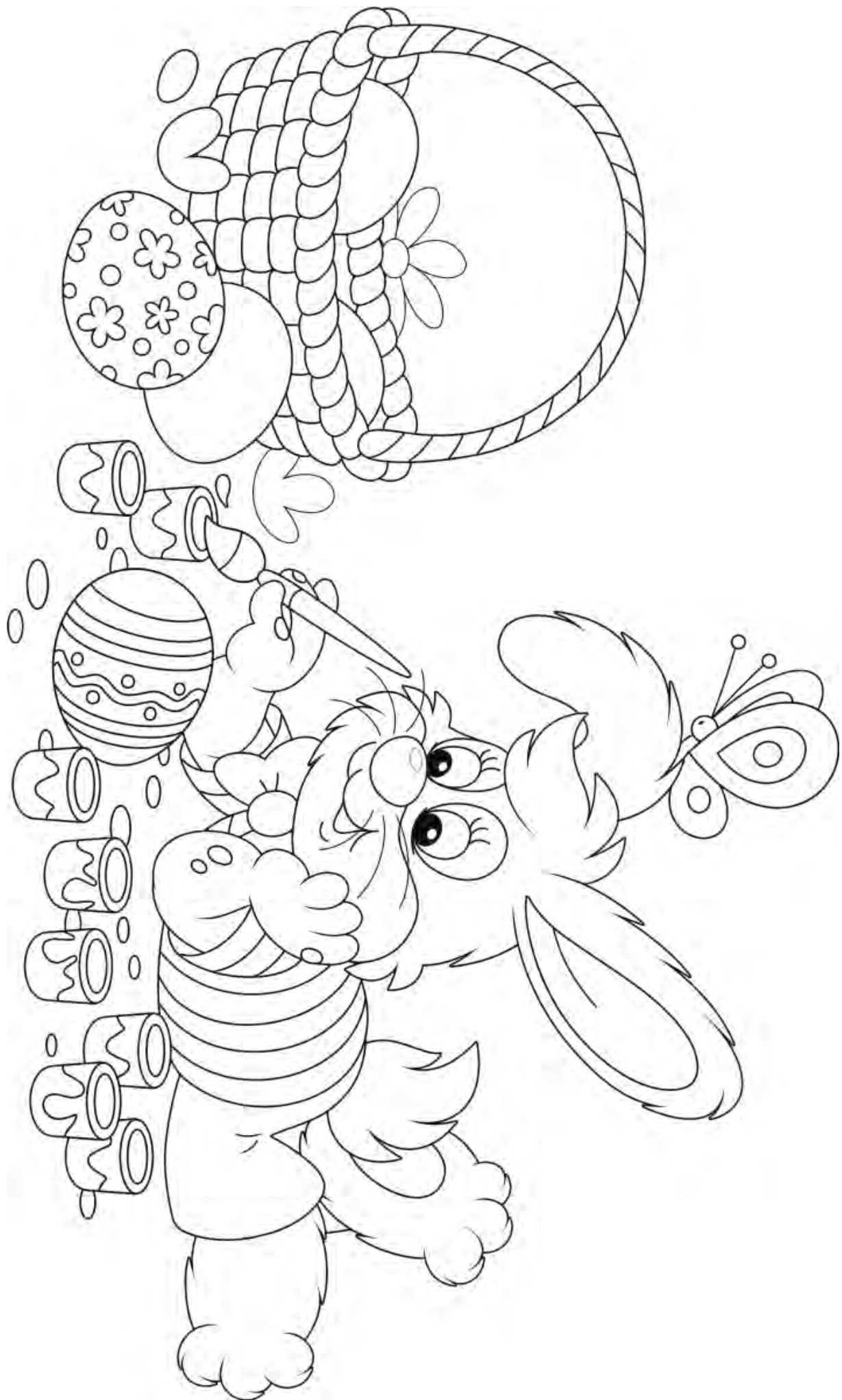
WOODANILLING BAPTIST CHURCH

Renowned for travelling around the Great Southern on his push-bike, the late Reverend William Kennedy instigated the building of many churches in the region including the one in the Woodanilling townsite with its colourful stained-glass windows. Stone used to build the church was taken from a hill between Woodanilling and Boyerine to the north. Building work was completed in 1908 with the help of local labour. The visitor's book is an interesting read, and we would love you to enrich it with your comments.



RICHARDSON & CO

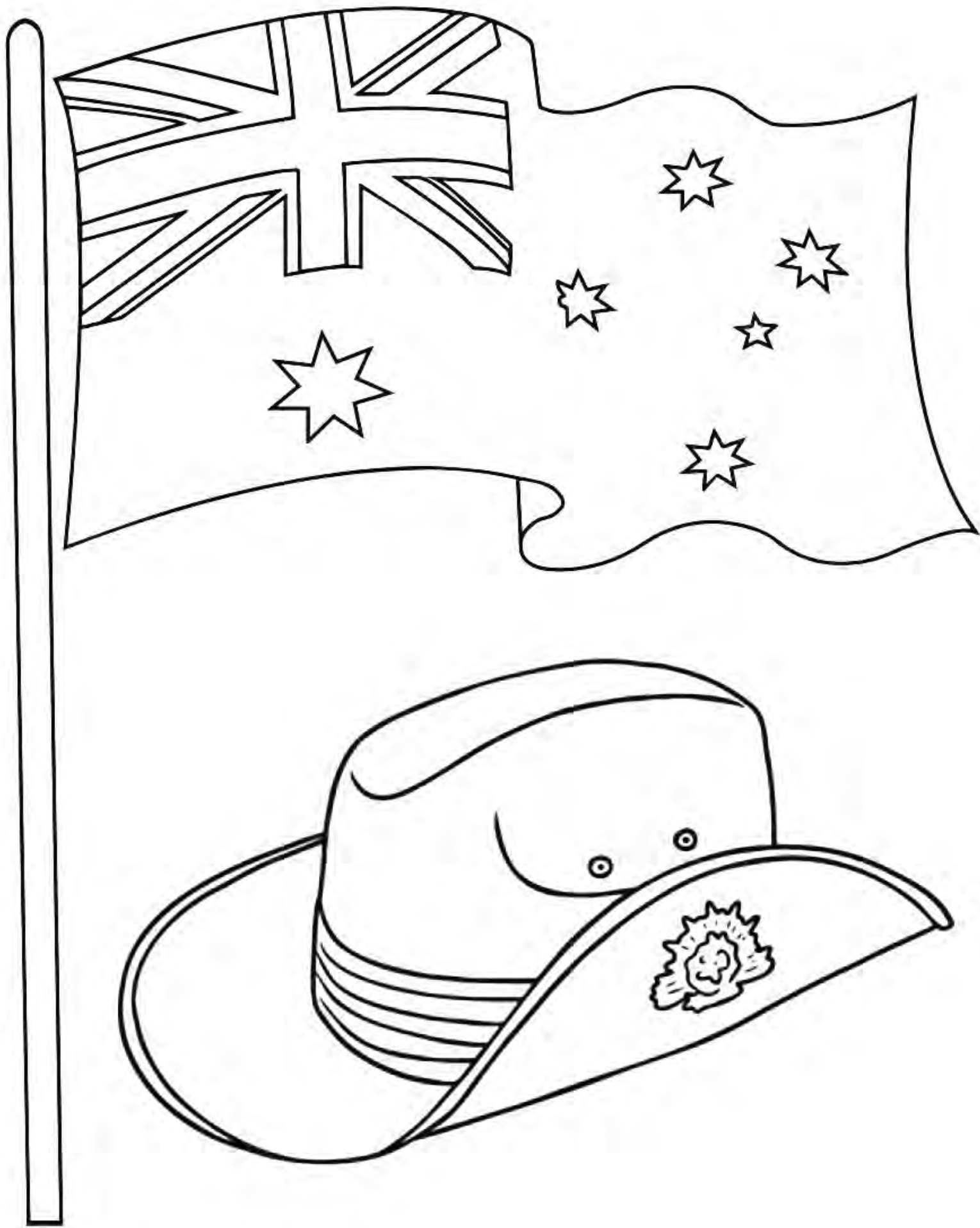
The Woodanilling Men's Shed operates out of the recently restored Richardson & Co store. Built in 1905, the store originally catered for local farmers, sandalwood cutters and rail and road workers. The Men's Shed have restored the building both externally and internally, and it now takes pride of place in the main street.



Colouring In Competition- Submit your entry to the Shire Office or email woody.wongi2020@gmail.com

Best entries will be published in the next Wongi

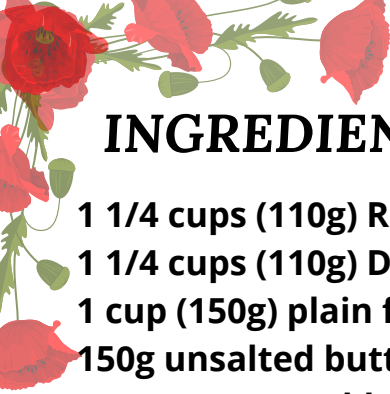
Please submit your name, age & contact details with your entry



Colouring In Competition- Submit your entry to the Shire Office or email woody.wongi2020@gmail.com

Best entries will be published in the next Wongi

Please submit your name, age & contact details with your entry



INGREDIENTS

- 1 1/4 cups (110g) Rolled Oats**
- 1 1/4 cups (110g) Desiccated Coconut**
- 1 cup (150g) plain flour**
- 150g unsalted butter**
- 1/4 cup (90g) golden syrup**
- 1 cup (220g) raw sugar**
- 1/2 tsp Coles Bicarbonate Soda**

METHOD

Step 1

Preheat oven to 180C. Combine the oats, coconut, flour and a pinch of salt in a bowl. Set aside. Place the butter, golden syrup and sugar in a saucepan over medium heat, stirring until butter melts. Bring to a simmer and cook for a further 1-2 minutes until sugar dissolves. Remove from heat, cool slightly, then add the bicarb soda and 1 tbsp water. Stir to combine, then pour over the oat mixture.

Step 2

Using a wooden spoon, combine butter and oat mixture. Using 1 tbsp mixture each, roll into 24 equal-sized balls. Divide between two baking paper-lined baking trays, leaving 3cm between each.

Step 3

Flatten biscuits slightly, then bake for 10-12 minutes until the top tray is slightly golden. Swap trays and cook for a further 6-8 minutes until all biscuits are golden. Remove from oven and cool completely on a wire rack.



ANZAC Biscuits

Fish Burger

INGREDIENTS

- | | |
|--|---------------------------------------|
| 1/2 cup plain flour | 2 tbsp olive oil |
| 2 eggs | 40g butter, chopped |
| 2 1/2 cups fresh white breadcrumbs | 4 hot dog buns, split, toasted |
| 1 tbsp lemon pepper | 80g baby spinach |
| 700g whiting fillets , bones and skin removed | 1/2 cup tartare sauce |
| | Oven-baked chips, to serve |
| | Lemon wedges, to serve |

Step 1

Preheat oven to 150C. Place flour on a plate. Lightly beat eggs in a shallow bowl. Combine breadcrumbs and lemon pepper on a plate.

Step 2

Coat fish, in flour. Dip into egg, followed by breadcrumb mixture, Transfer to a large plate.

Step 3

Heat oil and butter in a large, non-stick frying pan over medium heat. Cook fish, for 2 minutes each side or until cooked through. Transfer to a baking tray.

Step 4

Top hot dog bun bases with spinach, fish fillets, tartare sauce and bun tops. Serve with chips and lemon wedges.

Good Friday Meal Idea





APRIL BIRTHDAYS


1st Brooke Dellacqua
4th Pauline Mader
4th Ivan Kippin
7th Jessica Trimming
7th Darren Severin
8th James Shackley
12th Wendy Bessell-Browne
16th Danielle Perrie
17th Marieka Wilson
19th Wayne Shackley
25th Lesley Trimming
26th Tim Bolt
29th Leanne Moulden

MONTHLY RAINFALL 2023

JAN	7.2
FEB	0
MAR	12.6
APR	
MAY	
JUN	
JUL	
AUG	
SEP	
OCT	
NOV	
DEC	

EVENT CALENDAR



APRIL 7th	School Term 1 Finishes
7th - 23th	School Holidays
7th	Good Friday
18th	Ordinary Council Meeting 

BETTY TERRY THEATRE

6 TRENT STREET, WAGIN




YOU CAN'T RUN FROM YOUR PAST

CREED III

ONLY IN CINEMAS
MARCH 2



Friday – 31st March @ 6.30pm

Saturday – 1st April @ 2.00pm & 6.30pm

Monday – 3rd April @ 6.30pm

KIDS - \$8

ADULTS - \$13

CONCESSION - \$11

KIOSK AVAILABLE NO EFTPOS DOORS OPEN 30 MINUTES EARLIER




MiniSTARS

Wednesdays

9:00am-11:00am

26th April

2023 Enrol Now

A **FREE** weekly program, held in our Early Childhood Centre.

Please call our office on 9820 8100 to enrol your child or for more information.






We know your soil because we **dig deeper** into the data

Soil test with inSITE, our industry leading soil analysis program

- Independent laboratory.
- Rapid turnaround times.
- Wide range of analytes measured.
- Product recommendations based on results.
- Support from your experienced Area Manager.
- View results on SummitConnect.
- Customer owned data.



**Speak with Chloe
to learn more**



Mobile: 0447 469 245

Email: cturner@summitfertz.com.au

We're hiring in Woodanilling

Follow your passion with a career in aged care. Catholic Homes has been providing aged care for over 50 years in Western Australia and are looking for people to join our Home Care team.



We are looking for caring and passionate nursing and support workers for our home care services in the Great Southern.

Our Care with Purpose people-centred care model promotes dignity, respect, privacy and independence.

As a not-for-profit organisation, we are inclusive and welcome all faiths and backgrounds.

We offer competitive hourly rates, casual loading and full training. We have both permanent and casual roles available now.

*If you would like to discuss further call 1300 244 000
or email your CV to homecare@catholichomes.com*



**care with
purpose**

NEATCARE TREE SERVICES

TREE LOPPING & PRUNING

Email: sales@neatcare.com.au
neatcaretreeservices.com.au



0409 782 628

FOR ALL YOUR MECHANICAL
REPAIRS AND SERVICING CALL
YOUR LOCAL MECHANIC BOB
HYNDMAN PH: 0438 441 390



Woodanilling Spreading Service

Spreading service for Woodanilling &
surrounding areas.
Load Cells & GPS, Loader Lime, Super,
Urea. Pick up from CSBP Wagin
available.



Phone : Tim Brown
0418 470 920 or 98231 115
timothy.brown@bigpond.com



Peter Rundle MLA
MEMBER FOR ROE

Narrogin Office
PO Box 378
Narrogin WA 6312

Ph: 08 9881 1225

Esperance Office
107 Dempster St
Esperance WA 6450

Ph: 08 9071 6555

@PeterRundleMLA facebook.com PeterRundleRoe
E: Peter.rundle@mp.wa.gov.au | www.peterrundle.com.au



Currently taking orders for
all Goldacres spray
equipment



GOLDACRES

Agricultural chemical spray equipment

Australia's most innovative
agricultural chemical sprayers



Call Shane at Perkins Machinery 0429 947 434



Self Propelled Crop Cruiser Range

High capacity, high
clearance and high-
performance!

Designed for operators who
demand the very best in
sprayer performance,
efficiency and comfort.



Trailing Sprayers and Booms

Goldacres have a wide
variety in their Prairie
Range of trailing sprayers!

There will be one to meet
your needs



Batchmate - 8001

The Batchmate is portable,
easy to use, and proven.

The Batchmate gives the
operator the benefit of:

- Lower fuel costs
- Faster fill time
- Improved mix quality
- Greater productivity

perkinsmachinery.com.au 9881 2222



Phone (08) 98 211 471
Fax (08) 98 211 473
A/H Emergencies
0427 017 462

3/114 Clive Street
PO Box 841
KATANNING WA 6317

Find us on
Facebook

www.kojonupvethospital.com.au
kvc@kojonupvethospital.com.au



Home Maintenance & Renovations

Call Greg

0424 474 284



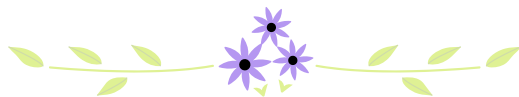
All Good Refund Depot

20A Tavistock Street
Wagin WA 6315
9am - 1pm Thurs, Fri & Sat
Phone 08 9861 2500
Drop Off & Pick up Hotline
0439 956 175



WONGI CONTRIBUTORS

All contributions are to be sent to the new Wongi email or to the volunteers listed below; or may be left at the Woodanilling Store in a box provided or handed into the Shire office. Any queries, comments or complaints are to be directed to the Wongi Volunteer.



Ciara Whitmore
3316 Robinson Rd
WOODANILLING WA 6316
Phone: 9823 1506

NEW IDEAS ENCOURAGED!!

We would love to see new suggestions and ideas for the Wongi. By chance do you know someone with upcoming births, marriages, milestones, new locals to have their birthdays added or ad put into the Wongi. Any comments in passing, interesting activities happening in Woody? Email- shire@woodanilling.wa.gov.au with your comments, suggestions and updates

NEXT WONGI - 01 MAY 2023
Deadline for Articles - 19 APRIL 2023

Advertising Rates 2021/2022

The below rates are for an A4 page size and in black & white (per month)

Full page \$66.00
Half page \$33.00
1/4 page \$16.50
Business Card \$8.25

If you would like to advertise your business in the Wongi, please email shire@woodanilling.wa.gov.au

DISCLAIMER

Due to the Trade Practices Act 1974, this publication accepts no responsibility for the accuracy or reliability of the contributors or advertisers. The publisher reserves the right to refuse matter considered unsuitable.

The opinions expressed are not necessarily those of the Shire of Woodanilling or the Wongi volunteers.

IF UNCLAIMED

Please return to
PO Box 99
WOODANILLING WA 6316